

---

Simon Smart

# Installation manual

Ver.2.0

## Content

1	Network Environment.....	3
1.1	Basic Requirement for Network.....	3
1.2	Smart Gateway.....	4
1.2.1	Smart Gateway (LAN) .....	5
1.2.2	Smart Gateway (LAN) (SAAS).....	7
1.2.3	Smart Gateway (Wireless) .....	10
1.2.4	Smart Gateway (Wall-Mounted) .....	12
2	Smart Switch .....	14
2.1	I7/M3 Smart Switch .....	14
2.2	E3 Smart Switch .....	17
2.3	Multifunction Smart Switch (Scene+switch).....	19
2.4	Multifunction Smart Switch (Scene + Curtain) .....	21
2.5	M7 Smart Switch.....	23
3	Smart Easy Switch .....	25
3.1	I7/E6/M3/E3 Easy Switch (no neutral).....	25
3.2	52S Easy Switch (no neutral).....	27
4	Smart Scene Switch.....	29
4.1	I7/M3/E3 Smart Scene Switch .....	29
4.2	M7 Smart Scene Switch .....	32
4.3	Remote Control Scene Switch.....	35
5	Smart Dimming Switch.....	38
5.1	I7 Smart Dimming Switch (Triac light).....	38
5.2	M3/E3 Smart Dimming Switch (Triac light).....	40
5.3	M7 Smart Dimming Switch (Triac light) .....	42
5.4	I7 Smart Dimming Switch (No load/ ZigBee to 0-10V set) .....	45
5.5	I7/M3 Smart Tunable White and Dimming Switch (No load/ ZigBee control) .....	48
6	Smart Curtain Switch.....	51
6.1	Smart Curtain Switch (Load: High voltage curtain motor) .....	51
6.2	M7 Smart Curtain Switch (Load: High voltage curtain motor).....	53
7	Smart Thermostat .....	55
8	Multi-control panel .....	57
8.1	Simpad86 multi-control panel with gateway .....	57
8.2	Simpad plus with gateway (Alexa speaker).....	60
8.3	Homepad air .....	63
8.4	X3 Smart control panel .....	65
9	Sensors.....	70
9.1	Smart Flammable Gas Detector .....	70
9.2	Smart Smoke Alarm Detector .....	71
9.3	Smart flood detector .....	73
9.4	Smart PIR Motion Sensor .....	74
9.5	Smart human presence detector ceiling sensor (ZigBee) .....	75
9.6	Smart Temperature and Humidity Sensor .....	78

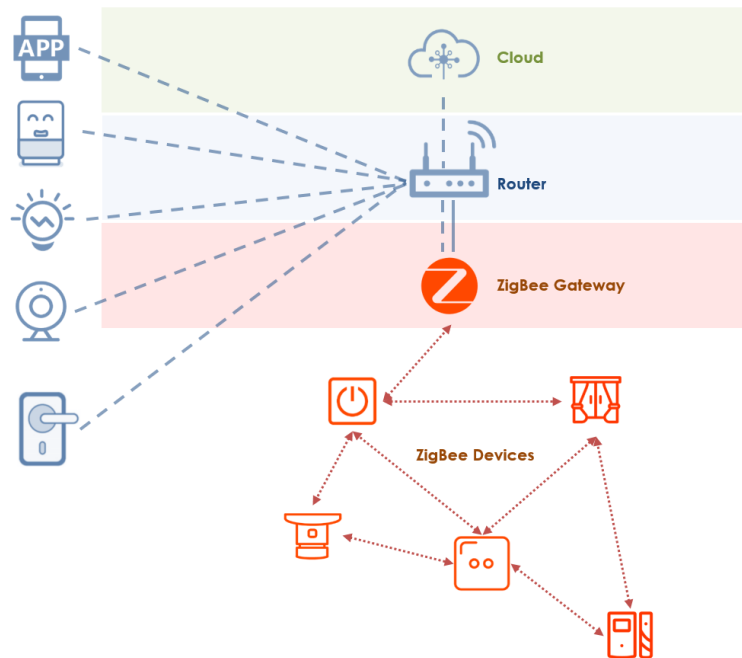
## Simon-Smart Installation Manual

---

9.7	Smart Door and Window Sensor .....	79
9.8	Smart Emergency Button .....	80
9.9	Smart Vibration Sensor .....	81
9.10	Smart Infrared Remote Controller .....	83
9.11	Smart RF Infrared Remote Controller .....	84
9.12	Smart breaker .....	85
10	Smart Curtain motor .....	87
11	Smart Lock .....	89
12	Smart Camera .....	91
13	Smart doorbell .....	92
14	Smart alarm security set .....	94
15	Smart Lighting .....	97
15.1	Smart Downlight .....	97
15.2	Smart Bulb .....	98
15.3	Smart KC1 .....	98
15.4	Smart GU10 .....	99
15.5	Smart Strip .....	99

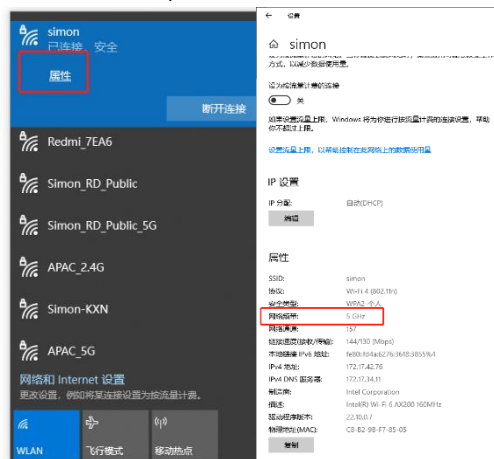
# 1 Network Environment

## 1.1 Basic Requirement for Network



### Wi-Fi — Home Router

- Support 2.4GHz Wi-Fi, select 2.4GHz Wi-Fi signal
- 2.4G/5G combination Wi-Fi is not supported
- Can check the Wi-Fi type on the mobile phone or PC





### ZigBee — Smart Gateway

- Need to be connected with home router via network cable or Wi-Fi
- Connect ZigBee devices to internet

#### Tips: Change network environment of Smart Gateway (LAN)

- Change the Wi-Fi password/ Wi-Fi Name: Smart Gateway (LAN) and ZigBee devices under the gateway will not be influenced, but Wi-Fi devices will be offline.
- Change the router: Smart Gateway (LAN) and ZigBee devices under the gateway will not be influenced, but Wi-Fi devices will be offline.

#### Change network environment of Smart Gateway (Wireless)

- Change the Wi-Fi password/ Wi-Fi Name: Smart Gateway (LAN), ZigBee devices under the gateway and Wi-Fi devices will be offline.
- Change the router: Smart Gateway (LAN), ZigBee devices under the gateway and Wi-Fi devices will be offline.

**\*In the Situation that smart gateway and ZigBee devices under the gateway are offline, long press the button on the gateway to reset it, and make network configuration of gateway again, then they can work normally.**  
**For offline Wi-Fi devices, need to reset them and make network configuration again.**

## 1.2 Smart Gateway

The smart gateway is the control center of the ZigBee device.

#### Parameters:

Code	681808TY	S00E0-S008	S00E0-S009	55E761TY/ 70E761TY/ 58E8061TY/ 72E8061TY/ 30E8061TY	S00E0-S026 S00E0-S042
Communication	LAN/ZigBee		Wi-Fi/ZigBee		Wi-Fi/ZigBee
Power Supply	USB 5V/1A			220-240V ~50/60Hz	220-240V ~50/60Hz
Recommended Number of connecting devices	Max 100	Max 100	Max 50	Max 30	Max 100

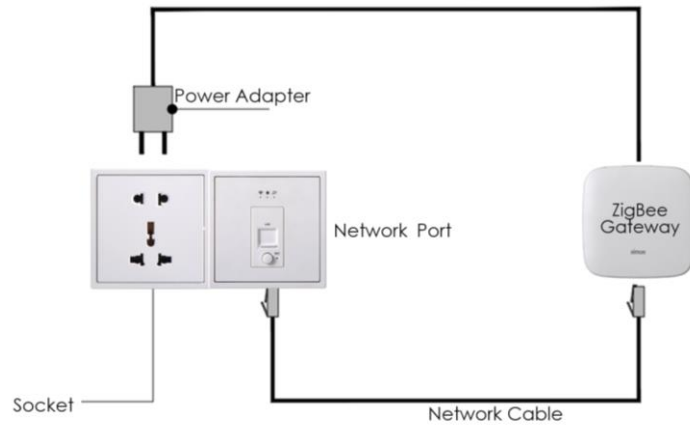
## Simon-Smart Installation Manual

### 1.2.1 Smart Gateway (LAN)

Code	Description
S00E0-S008	Smart ZigBee Gateway (LAN)

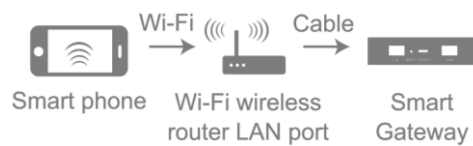
#### Installation Environment:

- Need power supply and network port



#### Preparation for Use:

- Mobile phone is connected to 2.4GHz Wi-Fi
- Ensure that the smart gateway and mobile phone are under the same Wi-Fi network

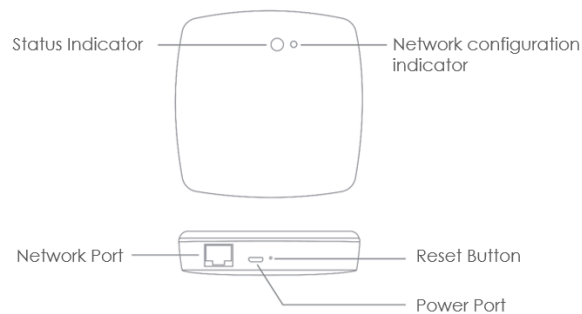


#### Network Configuration:

- Download and open Simon Smart APP



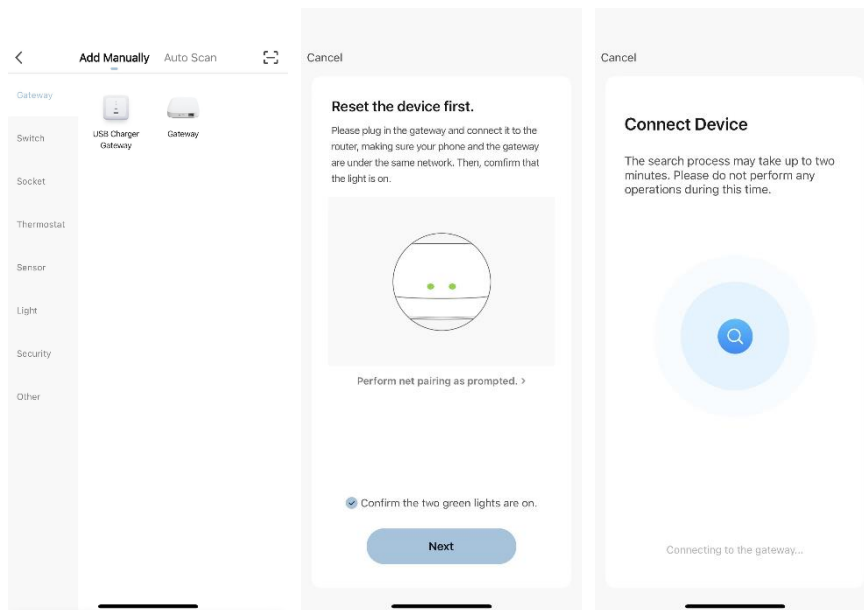
- Long press the reset button for more than 5s until the network configuration indicator flashes



- Open Simon Smart APP, click add button “+” on the top right corner on the home page, select “Gateway” menu and then select “Gateway”

## Simon-Smart Installation Manual

- Add the device as per the app prompts

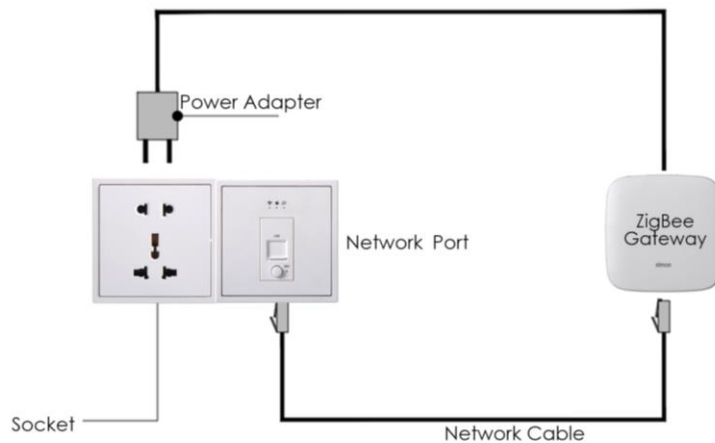


### 1.2.2 Smart Gateway (LAN) (SAAS)

Code	Description
681808TY	Smart ZigBee Gateway (LAN) (SAAS)

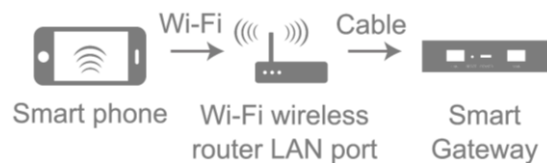
#### Installation Environment:

- Need power supply and network port



#### Preparation for Use:

- Mobile phone is connected to 2.4GHz Wi-Fi
- Ensure that the smart gateway and mobile phone are under the same Wi-Fi network



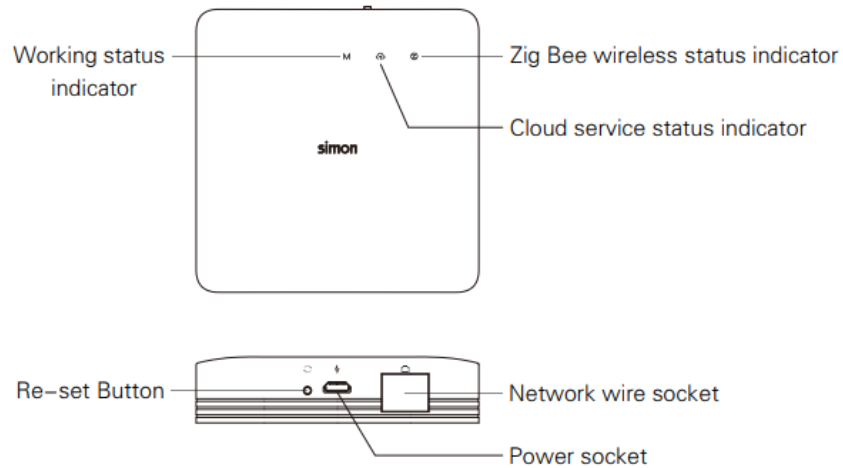
#### Network Configuration:

- Download and open Simon Smart APP

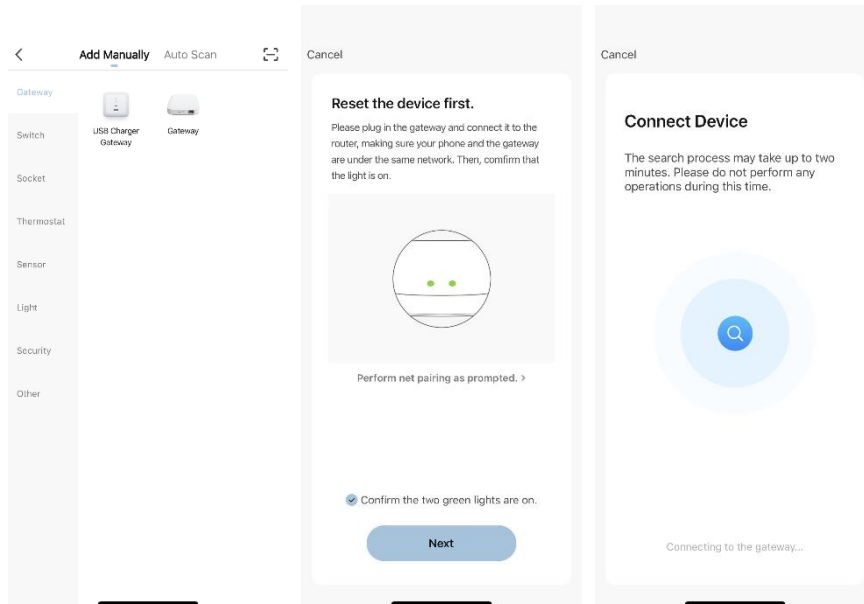


- Confirm that the working status indicator and cloud service status indicator are normally ON and the Zig Bee wireless status indicator is OFF
- Ensure that your mobile phone is connected to your home 2.4 GHz frequency band router, where the mobile phone and the gateway are on the same local area network

## Simon-Smart Installation Manual



- Open Simon Smart APP, click add button “+” on the top right corner on the home page, select “Gateway” menu and then select “Wired Gateway”
- Add the device as per the app prompts



- Explanation of indicators and button status

Working status indicator	4Hz is flashing	During the upgrade process
	2Hz is flashing	Equipment enters the engineering configuration mode
	Normally On	The system starts, and the equipment is in the normal working mode
	Unlit	Gateway not powered on
Cloud service status indicator	Normally On	Cloud service connected normally
	Unlit	Gateway not powered on and network not connected
ZigBee wireless	2Hz is flashing	The gateway is adding sub-devices

## Simon-Smart Installation Manual

---

status indicator	Normally On	The gateway is working normally and has been configured into the APP
	Unlit	The gateway is working normally, but is not configured into the APP
Button	Long press for 20 seconds	The indicator lashes three times at the same time and the device returns to the factory settings
	Press 10 consecutive times	Switching between the engineering mode and normal working state

## Simon-Smart Installation Manual

### 1.2.3 Smart Gateway (Wireless)

Code	Description
S00E0-S009	Smart ZigBee Gateway (Wi-Fi)

#### Installation Environment:

- Need power supply and good Wi-Fi signal coverage



#### Preparation for Use:

- Mobile phone is connected to 2.4GHz Wi-Fi
- Ensure that the smart gateway and mobile phone are under the same Wi-Fi network

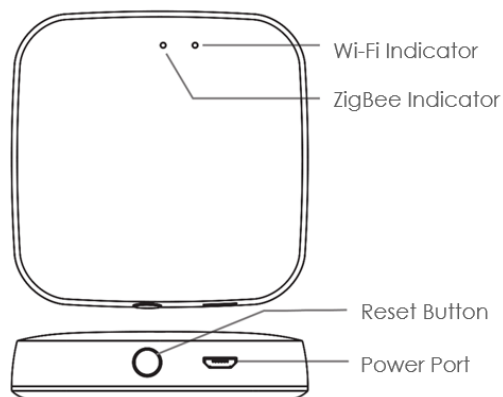


#### Network Configuration:

- Download and open Simon Smart APP



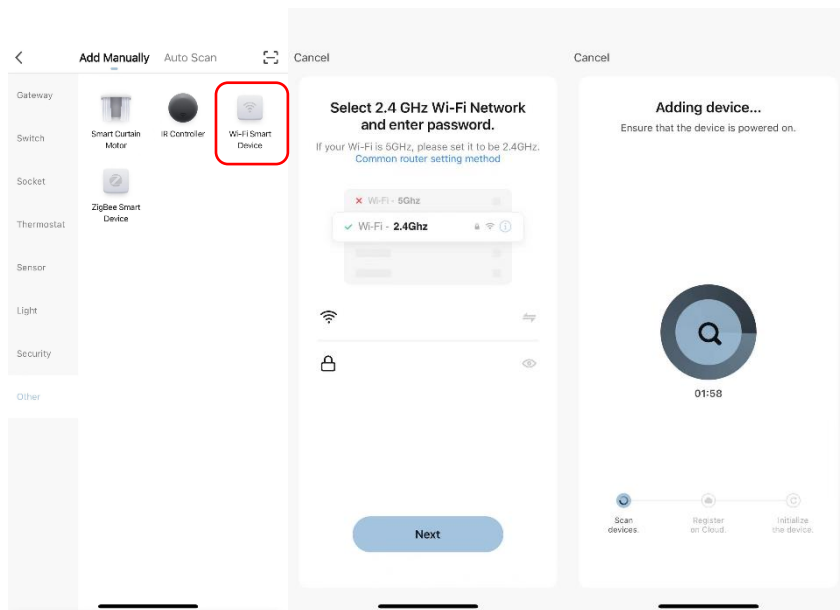
- After connecting the power, waiting for Wi-Fi (red) indicator blinking, meaning the gateway is waiting for pairing.
- If Wi-Fi indicator is not blinking, long press the reset button until it blinks.



- Open Simon Smart APP, click add button "+" on the top right corner on the home page, select "Other" menu and then select "Wi-Fi Smart Device"

## Simon-Smart Installation Manual

- Add the device as per the app prompts





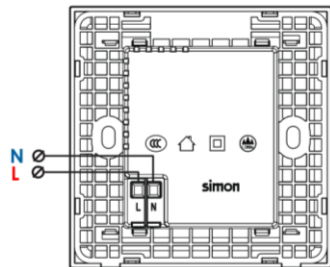
## Simon-Smart Installation Manual

### 1.2.4 Smart Gateway (Wall-Mounted)

Code	Description
30E8061TY	Smart ZigBee Wall-mounted USB A+C Gateway(Wi-Fi) (E3)
72E8061TY	Smart ZigBee Wall-mounted USB A+C Gateway(Wi-Fi) (E6)
55E761TY	Smart ZigBee Wall-mounted USB A+C Gateway(Wi-Fi) (M6)
70E761TY	Smart ZigBee Wall-mounted USB A+C Gateway(Wi-Fi) (i7)
58E8061TY	Smart ZigBee Wall-mounted USB A+C Gateway(Wi-Fi) (M3)

#### Installation Environment:

- Need to connect to L&N line



- Recommend to be mounted in a 86 type mounting box with depth  $\geq 45\text{mm}$
- Need good Wi-Fi signal coverage

#### Preparation for Use:

- Mobile phone is connected to 2.4GHz Wi-Fi
- Ensure that the smart gateway and mobile phone are under the same Wi-Fi network



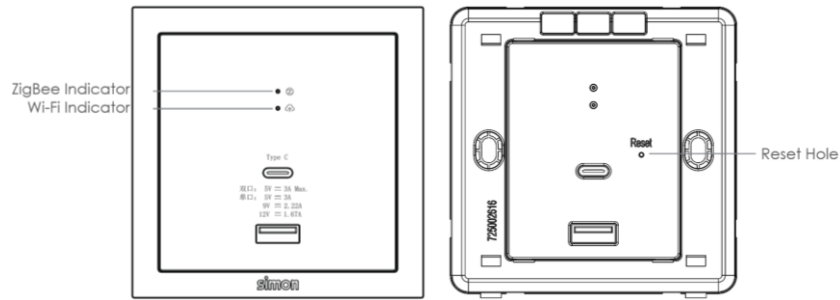
#### Network Configuration:

- Download and open Simon Smart APP



- After connecting the power, Wi-Fi indicator blinks, means waiting for pairing.
- If Wi-Fi indicator not blinks, remove the cover and insert the pin into the reset hole for 5~30 seconds until Wi-Fi indicator blinks.

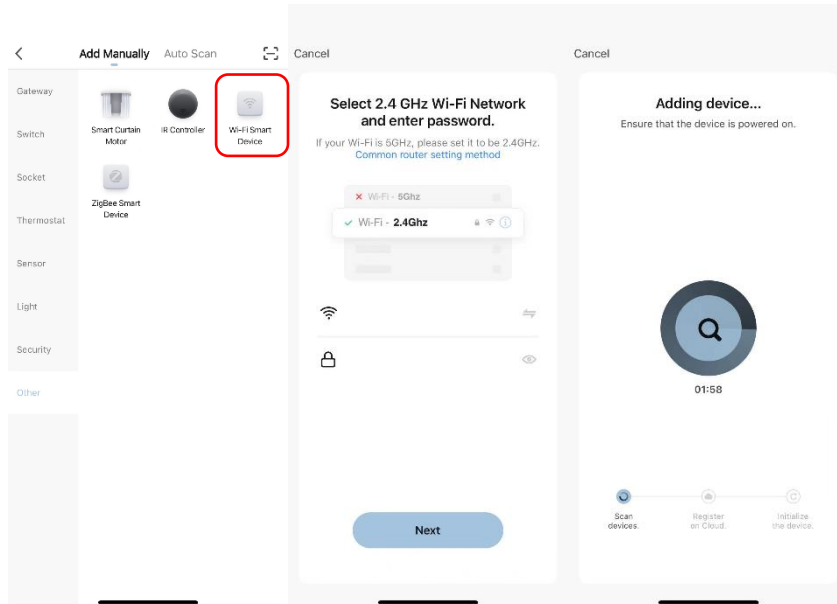
## Simon-Smart Installation Manual



- Open Simon Smart APP, click add button “+” on the top right corner on the home page, select “Other” menu and then select “Wi-Fi Smart Device”
- Add the device as per the app prompts

### Indicator Status:

Wi-Fi Indicator	ON	Connected to Wi-Fi
	Blinking	Wait for connection
	OFF	No Wi-Fi signal
ZigBee Indicator	ON	Inactive
	Blinking	Allow sub-device to access
	OFF	Active
Reset Button	Long Press	Restore default setting



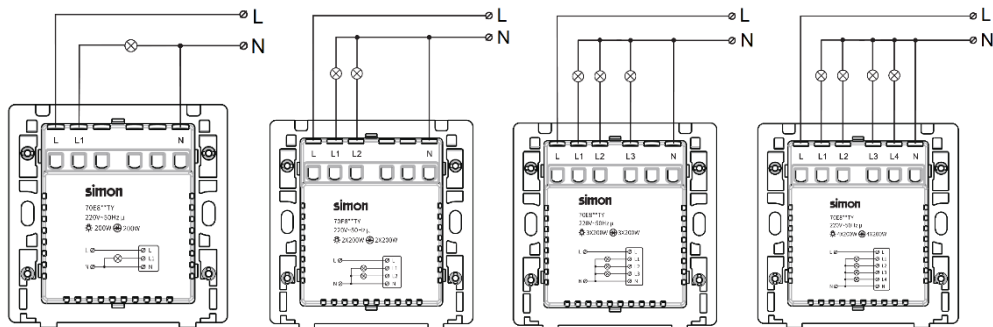
## 2 Smart Switch

### 2.1 I7/M3 Smart Switch

Code	Description
70E838TY	1 Gang Smart Switch Module
70E839TY	2 Gang Smart Switch Module
70E840TY	3 Gang Smart Switch Module
70E841TY	4 Gang Smart Switch Module
70E855TY	1 Gang Smart Switch Module(20A)
58E8001TY	1 Gang Smart Switch
58E8002TY	2 Gang Smart Switch
58E8003TY	3 Gang Smart Switch
58E8004TY	4 Gang Smart Switch

#### Installation Environment:

- Need to connect to L&N line in the mounting box



#### Preparation for Use:

- Ensure that the smart gateway has been added.
- Mobile phone is connected to Internet (Wi-Fi or 3G/4G/5G)
- Ensure effective coverage of ZigBee network. (Communication distance between any ZigBee devices: <2 walls, <100m in open area)

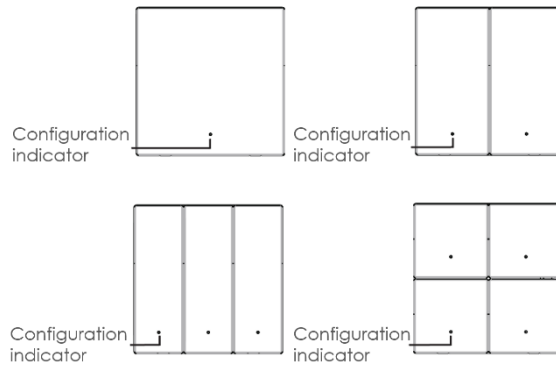
#### Network Configuration:

- Download and open Simon Smart APP

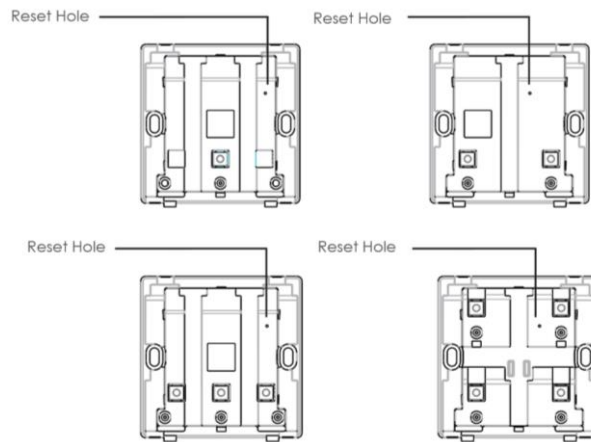


- After connecting the power, long press the left bottom button of switch until the configuration indicator flashes

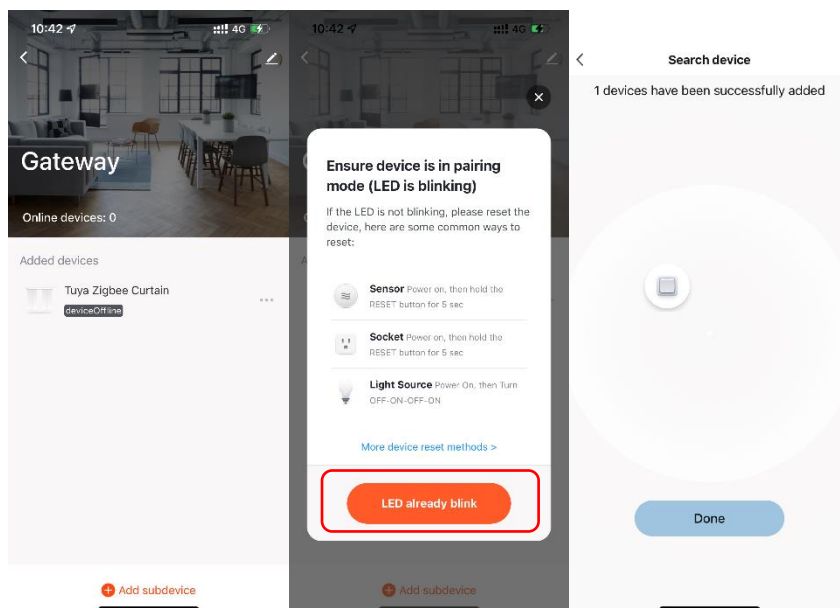
## Simon-Smart Installation Manual



- If not flashes, remove the cover and insert the pin into the reset hole until the configuration indicator flashes



- Open Simon Smart APP, enter the "Gateway" interface and click "Add Subdevice"
- Confirm that indicator is blinking, then click "LED already blink"
- Add the device as per the app prompts



## Simon-Smart Installation Manual

---

### Configuration Indicator Status:

Waiting pairing	4 quick flashes per second
Pairing success	2 flashes per second for 2s
Pairing failure	1 flash per second for 10s
Initial power on	ON for 1s
Reset success	2 flashes per second for 2s

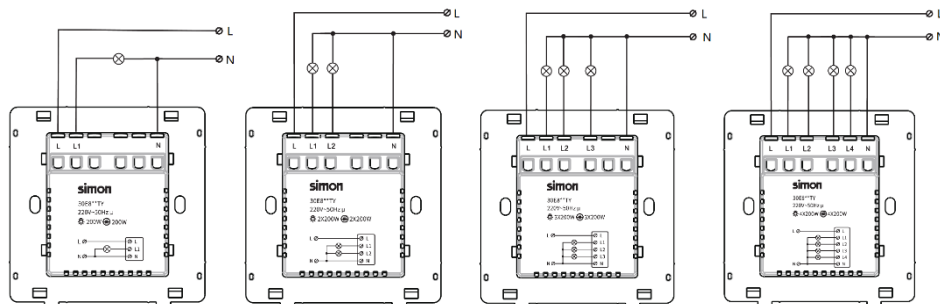
## Simon-Smart Installation Manual

### 2.2 E3 Smart Switch

Code	Description
30E801TY	1 Gang Smart Switch
30E802TY	2 Gang Smart Switch
30E803TY	3 Gang Smart Switch
30E804TY	4 Gang Smart Switch

#### Installation Environment:

- Need to connect to L&N line in the mounting box



#### Preparation for Use:

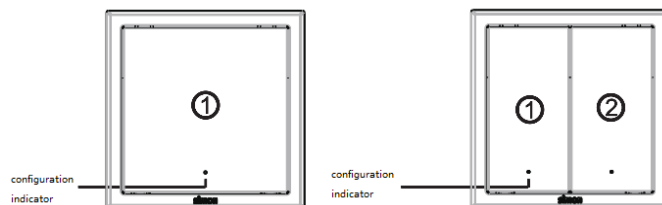
- Ensure that the smart gateway has been added.
- Mobile phone is connected to Internet (Wi-Fi or 3G/4G/5G)
- Ensure effective coverage of ZigBee network. (Communication distance between any ZigBee devices: <2 walls, <100m in open area)

#### Network Configuration:

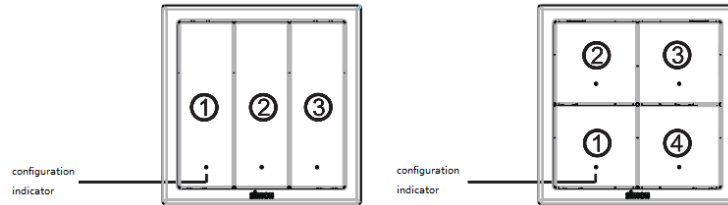
- Download and open Simon Smart APP



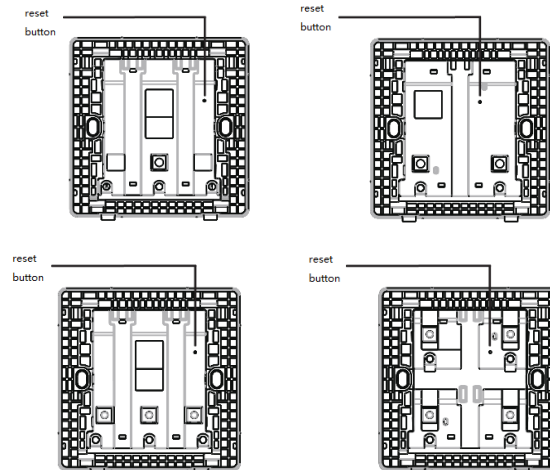
- After connecting the power, long press the left bottom button of switch until the configuration indicator flashes



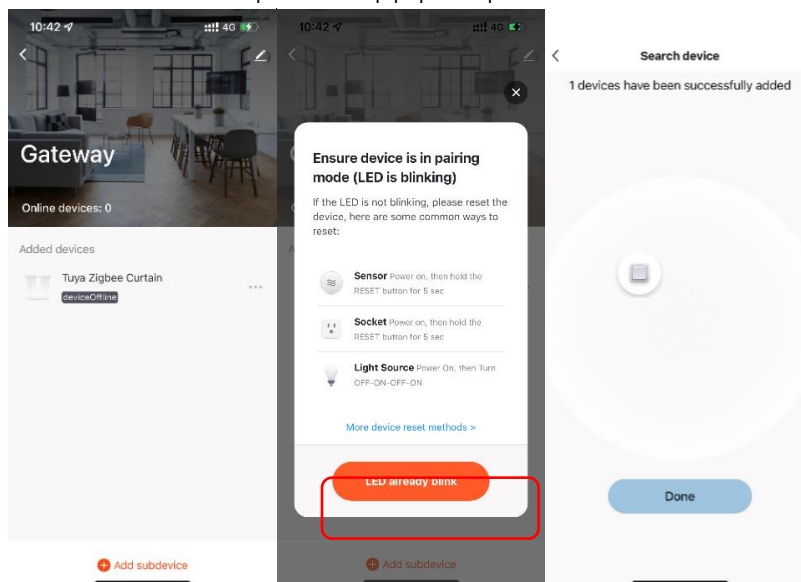
## Simon-Smart Installation Manual



- If not flashes, remove the cover and insert the pin into the reset hole until the configuration indicator flashes



- Open Simon Smart APP, enter the "Gateway" interface and click "Add Subdevice"
- Confirm that indicator is blinking, then click "LED already blink"
- Add the device as per the app prompts



### Configuration Indicator Status:

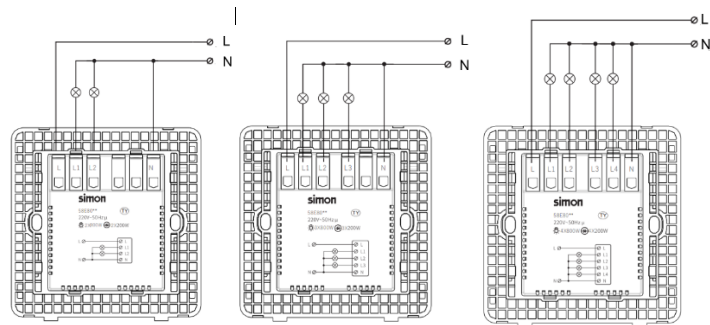
Waiting pairing	4 quick flashes per second
Pairing success	2 flashes per second for 2s
Pairing failure	1 flash per second for 10s
Initial power on	ON for 1s
Reset success	2 flashes per second for 2s

## 2.3 Multifunction Smart Switch (Scene+switch)

Code	Description
58E8009TY	4 Gang Multifunction smart switch(2 scene+2 switch)
70E854TY	4 Gang Multifunction Smart Switch Module(2 scene+2 switch)
58E8022TY	6 Gang Multifunction Smart Switch(3 scene+3 switch)
58E8023TY	6 Gang Multifunction Smart Switch(2 scene+4 switch)

### Installation Environment:

- Need to connect to L&N line in the mounting box



### Preparation for Use:

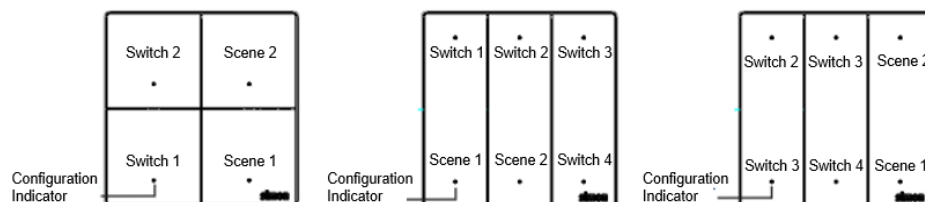
- Ensure that the smart gateway has been added.
- Mobile phone is connected to Internet (Wi-Fi or 3G/4G/5G)
- Ensure effective coverage of ZigBee network. (Communication distance between any ZigBee devices: <2 walls, <100m in open area)

### Network Configuration:

- Download and open Simon Smart APP



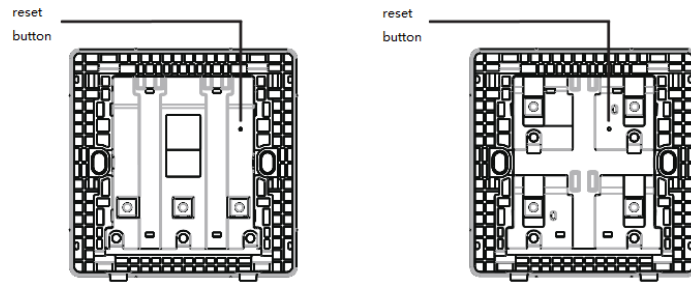
- After connecting the power, long press the left bottom button of switch until the configuration indicator flashes



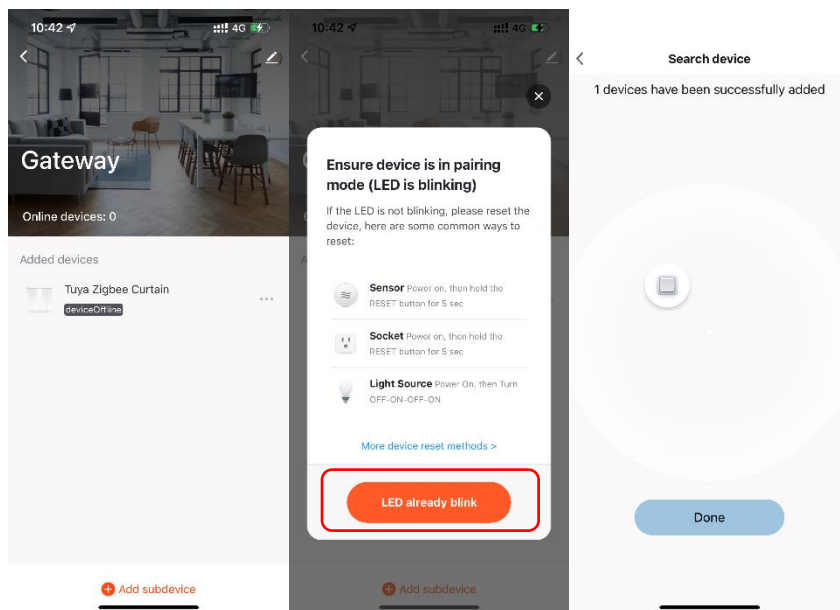
- If not flashes, remove the cover and insert the pin into the reset hole until the configuration indicator flashes



## Simon-Smart Installation Manual



- Open Simon Smart APP, enter the "Gateway" interface and click "Add Subdevice"
- Confirm that indicator is blinking, then click "LED already blink"
- Add the device as per the app prompts



### Configuration Indicator Status:

Waiting pairing	4 quick flashes per second
Pairing success	2 flashes per second for 2s
Pairing failure	1 flash per second for 10s
Initial power on	ON for 1s
Reset success	2 flashes per second for 2s

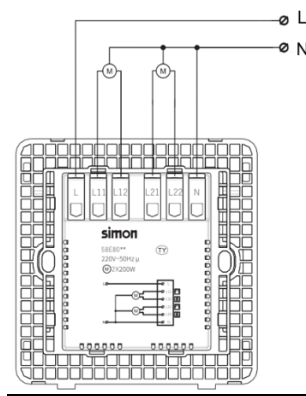
## Simon-Smart Installation Manual

### 2.4 Multifunction Smart Switch (Scene + Curtain)

Code	Description
58E8024TY	6 Gang Multifunction Smart Switch(2 scene+2 curtain)

#### Installation Environment:

- Need to connect to L&N line in the mounting box
- Need to connect to load, 4/5wire high voltage curtain motor



#### Preparation for Use:

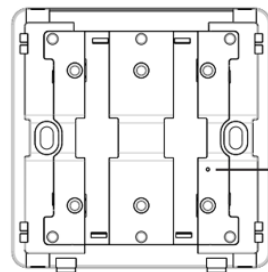
- Ensure that the smart gateway has been added.
- Mobile phone is connected to Internet (Wi-Fi or 3G/4G/5G)
- Ensure effective coverage of ZigBee network. (Communication distance between any ZigBee devices: <2 walls, <100m in open area)

#### Network Configuration:

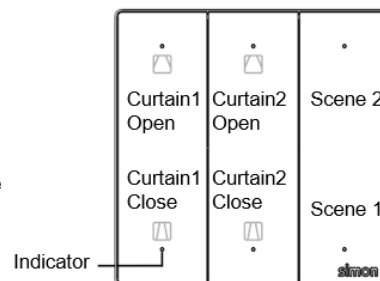
- Download and open Simon Smart APP



- Within 60s after connecting the power, remove the cover and insert the pin to long press the configuration hole for more than 3s until the indicator flashes

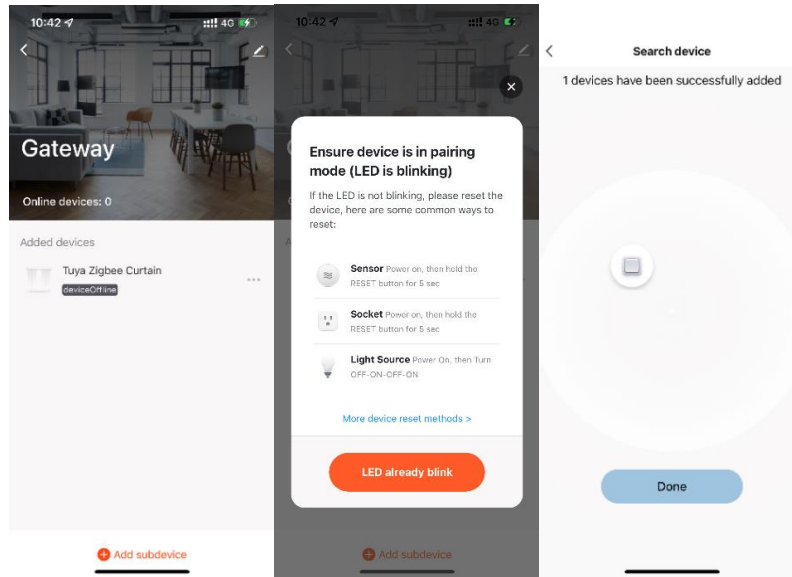


Configuration and Reset hole



- Enter the "Gateway" interface and click "Add Subdevice"
- Confirm that indicator is blinking, then click "LED already blink"
- Add the device as per the app prompts

## Simon-Smart Installation Manual



### Configuration Indicator Status:

Waiting pairing	4 quick flashes per second
Pairing success	2 flashes per second for 2s
Pairing failure	1 flash per second for 10s
Initial power on	ON for 1s
Reset success	2 flashes per second for 2s

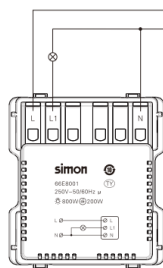
## Simon-Smart Installation Manual

### 2.5 M7 Smart Switch

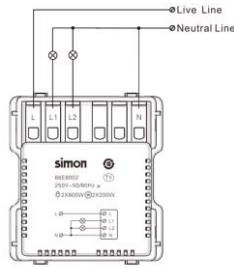
Code	Description
66E8001TY	1 Gang Smart Switch
66E8002TY	2 Gang Smart Switch
66E8003TY	3 Gang Smart Switch
66E8004TY	4 Gang Smart Switch
66E8009TY	4 Gang Multifunction smart switch(2 scene+2 switch)

#### Installation Environment:

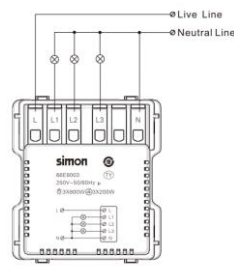
- Need to connect to L&N line in the mounting box



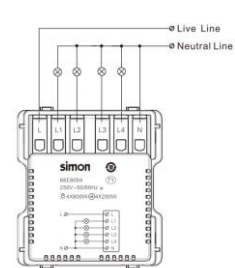
Wiring Diagram of 1 Gang Smart Switch



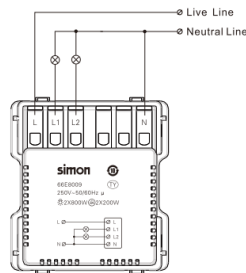
Wiring Diagram of 2 Gang Smart Switch



Wiring Diagram of 3 Gang Smart Switch



Wiring Diagram of 4 Gang Smart Switch



Wiring Diagram of 4 Gang Multifunction Smart Switch (2 scene + 2 switch)

#### Preparation for Use:

- Ensure that the smart gateway has been added.
- Mobile phone is connected to Internet (Wi-Fi or 3G/4G/5G)
- Ensure effective coverage of ZigBee network. (Communication distance between any ZigBee devices: <2 walls, <100m in open area)

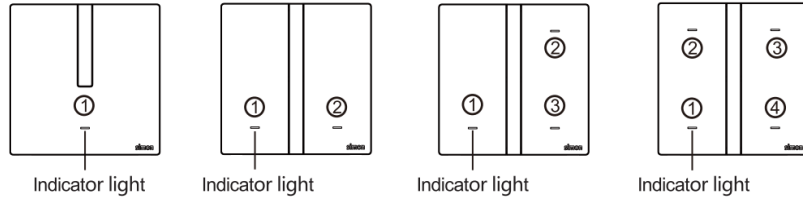
#### Network Configuration:

- Download and open Simon Smart APP

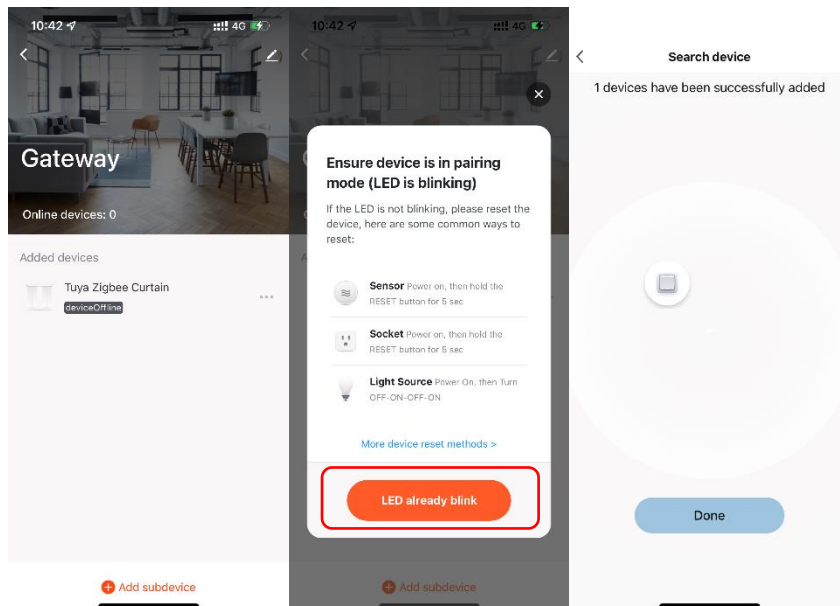


- After connecting the power, long press the first gang button no less than 3 seconds until the indicator is blinking. Add the device as per the app instructions. If it is not added after 180 seconds, please repeat the steps.

## Simon-Smart Installation Manual



- If not flashes, press the first gang button 4 times within 4 seconds, until the indicator blinks 4 times within 4 seconds. When the indicator is blinking at such frequency, long press the first gang button for 10 seconds until the indicator blinks 2 times within 2 seconds in white light, which indicates the device is reset.
- Open Simon Smart APP, enter the "Gateway" interface and click "Add Subdevice"
- Confirm that indicator is blinking, then click "LED already blink"
- Add the device as per the app prompts



### Configuration Indicator Status:

Waiting pairing	4 quick flashes per second in white color
Pairing success	2 flashes per second for 2s in white color
Pairing failure	1 flash per second for 10s
Initial power on	ON for 10s in white color
Reset success	2 flashes per second for 2s in white color
Proximity sensing	Default configuration: When the indicator is off, it will be on in white color for 10s upon human presence detected. When the indicator is on, it will be on in orange color for 10s upon human presence detected.

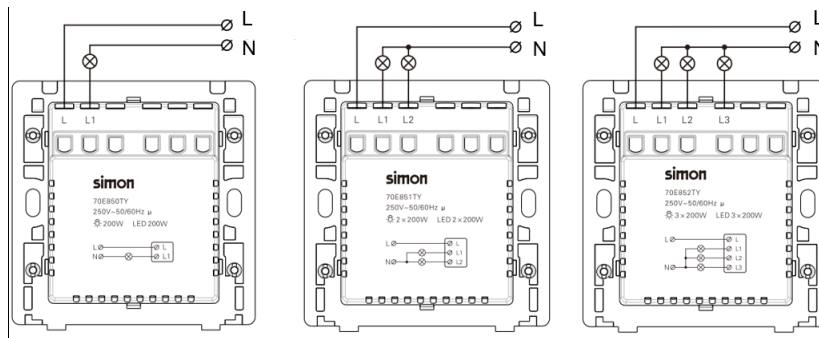
## 3 Smart Easy Switch

### 3.1 I7/E6/M3/E3 Easy Switch (no neutral)

Code	Description
70E850TY	1 Gang Smart Easy Switch Module
70E851TY	2 Gang Smart Easy Switch Module
70E852TY	3 Gang Smart Easy Switch Module
72E8031TY	1 Gang Smart Easy Switch
72E8032TY	2 Gang Smart Easy Switch
72E8033TY	3 Gang Smart Easy Switch
58E8031TY	1 Gang Smart Easy Switch
58E8032TY	2 Gang Smart Easy Switch
58E8033TY	3 Gang Smart Easy Switch
30E831TY	1 Gang Smart Easy Switch
30E832TY	2 Gang Smart Easy Switch
30E833TY	3 Gang Smart Easy Switch

#### Installation Environment:

- Only Need to connect to L Line in the mounting box. No need neutral line



#### Preparation for Use:

- Ensure that the smart gateway has been added.
- Mobile phone is connected to Internet (Wi-Fi or 3G/4G/5G)
- Ensure effective coverage of ZigBee network. (Communication distance between any ZigBee devices: <2 walls, <100m in open area)

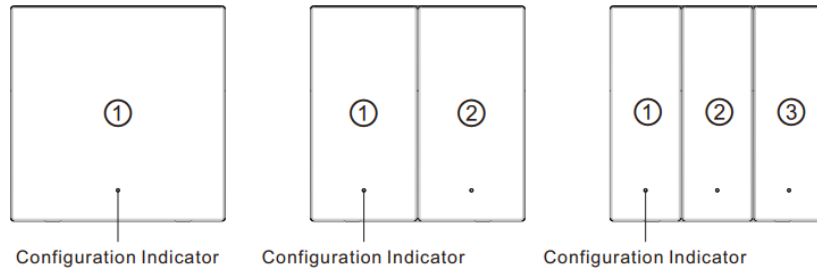
#### Network Configuration:

- Download and open Simon Smart APP

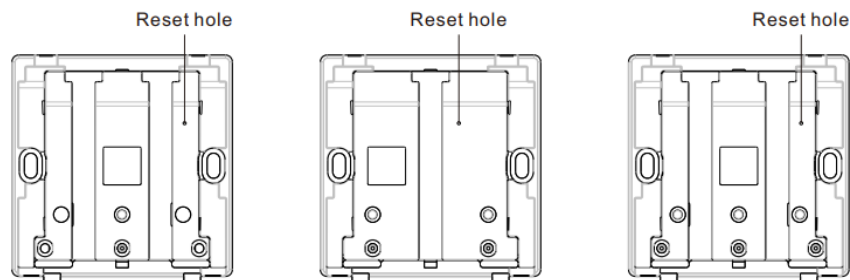


- After connecting the power, long press the left bottom button of switch until the configuration indicator flashes

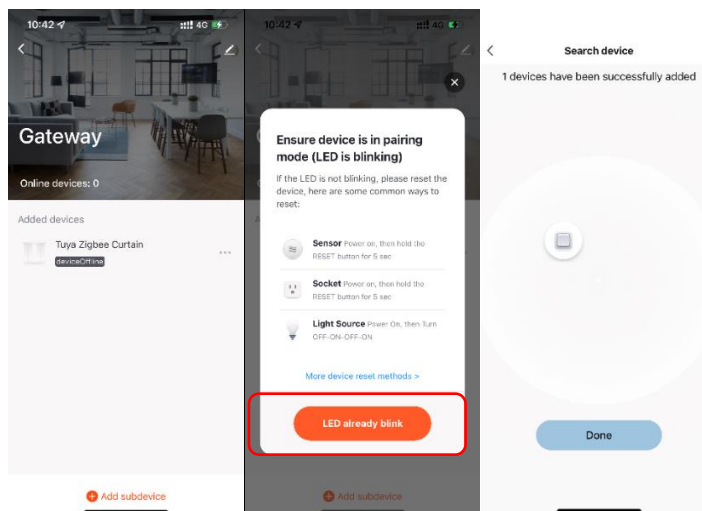
## Simon-Smart Installation Manual



- If not flashes or you want to reset, remove the cover and insert the pin into the reset hole until the configuration indicator flashes



- Open Simon Smart APP, enter the "Gateway" interface and click "Add Subdevice"
- Confirm that indicator is blinking, then click "LED already blink"
- Add the device as per the app prompts



### Configuration Indicator Status:

Waiting pairing	4 quick flashes per second
Pairing success	2 flashes per second for 2s
Pairing failure	1 flash per second for 10s
Initial power on	ON for 1s
Reset success	2 flashes per second for 2s

## 3.2 52S Easy Switch (no neutral)

Code	Description
HNE8031TY	1 Gang Smart Easy Switch
HNE8032TY	2 Gang Smart Easy Switch
HNE8033TY	3 Gang Smart Easy Switch

### Installation Environment:

- Only Need to connect to L Line in the mounting box. No need neutral line



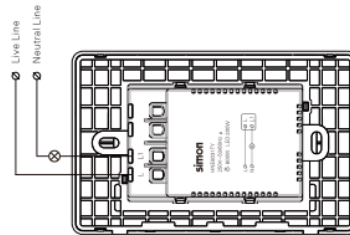
Front View of 1 Gang Smart Switch



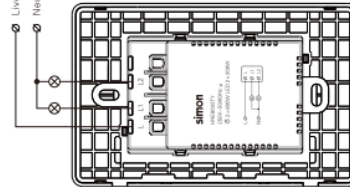
Front View of 2 Gang Smart Switch



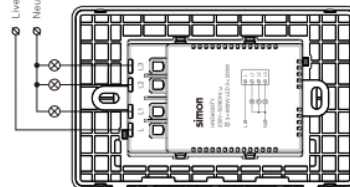
Front View of 3 Gang Smart Switch



Wiring Diagram of 1 Gang Smart Switch



Wiring Diagram of 2 Gang Smart Switch



Wiring Diagram of 3 Gang Smart Switch

### Preparation for Use:

- Ensure that the smart gateway has been added.
- Mobile phone is connected to Internet (Wi-Fi or 3G/4G/5G)
- Ensure effective coverage of ZigBee network. (Communication distance between any ZigBee devices: <2 walls, <100m in open area)

### Network Configuration:

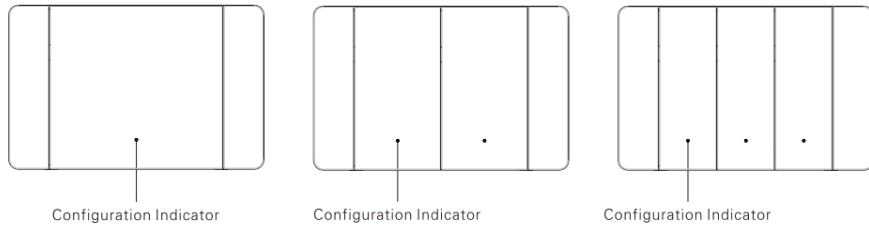
- Download and open Simon Smart APP



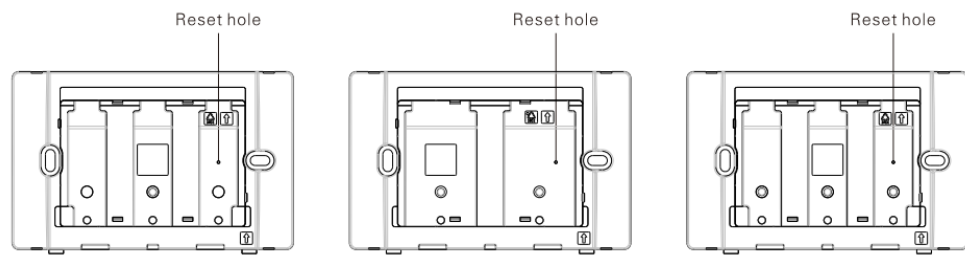
- After connecting the power, long press the left bottom button of switch until the configuration indicator flashes



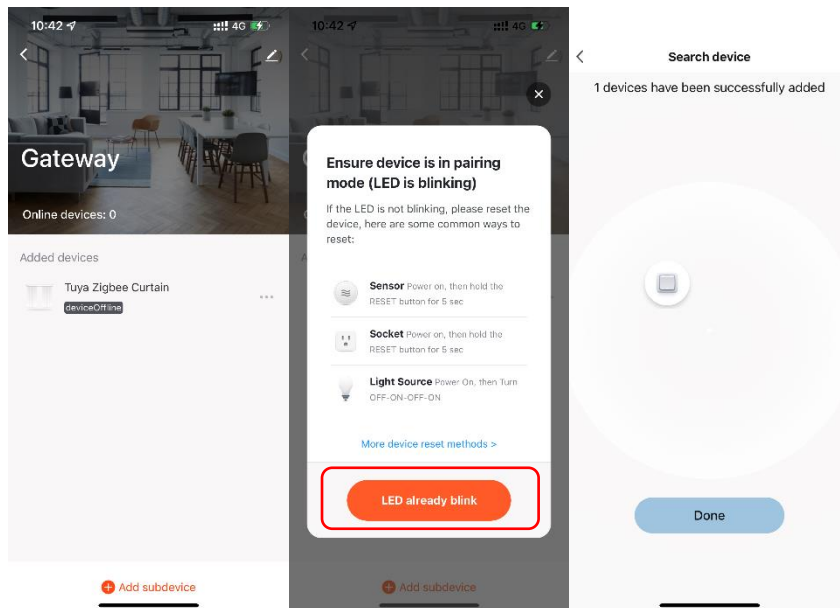
## Simon-Smart Installation Manual



- If not flashes or you want to reset, remove the cover and insert the pin into the reset hole until the configuration indicator flashes



- Open Simon Smart APP, enter the "Gateway" interface and click "Add Subdevice"
- Confirm that indicator is blinking, then click "LED already blink"
- Add the device as per the app prompts



### Configuration Indicator Status:

Waiting pairing	4 quick flashes per second
Pairing success	2 flashes per second for 2s
Pairing failure	1 flash per second for 10s
Initial power on	ON for 1s
Reset success	2 flashes per second for 2s

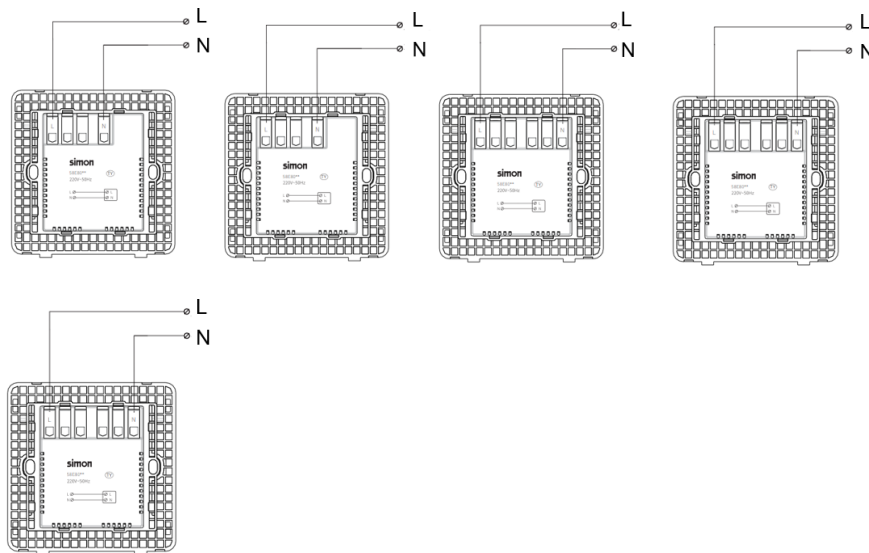
## 4 Smart Scene Switch

### 4.1 I7/M3/E3 Smart Scene Switch

Code	Description
70E842TY	1 Gang Smart Scene Switch Module
70E843TY	2 Gang Smart Scene Switch Module
70E844TY	3 Gang Smart Scene Switch Module
70E845TY	4 Gang Smart Scene Switch Module
58E8005TY	1 Gang Smart Scene Switch
58E8006TY	2 Gang Smart Scene Switch
58E8007TY	3 Gang Smart Scene Switch
58E8008TY	4 Gang Smart Scene Switch
58E8021TY	6 Gang Smart Scene Switch
30E805TY	1 Gang Smart Scene Switch
30E806TY	2 Gang Smart Scene Switch
30E807TY	3 Gang Smart Scene Switch
30E808TY	4 Gang Smart Scene Switch

#### Installation Environment:

- Only need to connect to L&N line in the mounting box, no need to connect lights(no load)



#### Preparation for Use:

- Ensure that the smart gateway has been added.
- Mobile phone is connected to Internet (Wi-Fi or 3G/4G/5G)
- Ensure effective coverage of ZigBee network. (Communication distance between any ZigBee devices: <2 walls, <100m in open area)

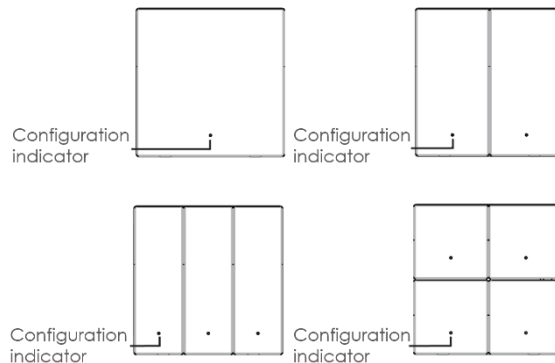
## Simon-Smart Installation Manual

### Network Configuration:

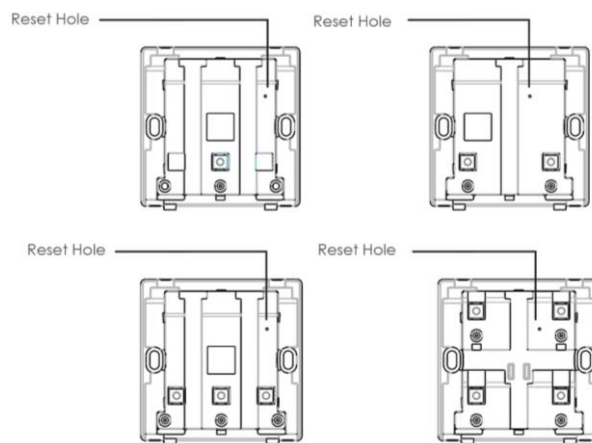
- Download and open Simon Smart APP



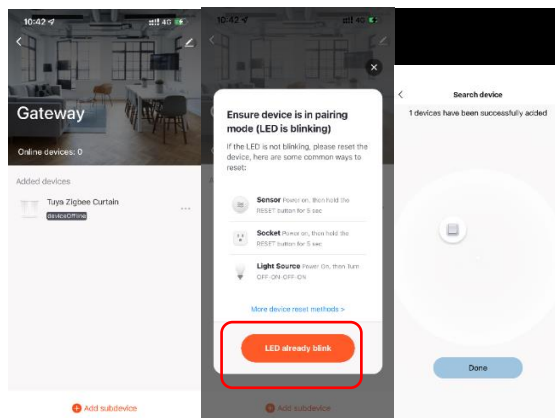
- After connecting the power, long press the left bottom button of switch until the configuration indicator flashes



- If not flashes or you want to reset, remove the cover and insert the pin into the reset hole until the configuration indicator flashes



- Open Simon Smart APP, enter the "Gateway" interface and click "Add Subdevice"
- Confirm that indicator is blinking, then click "LED already blink"
- Add the device as per the app prompts



## Simon-Smart Installation Manual

---

### Configuration Indicator Status:

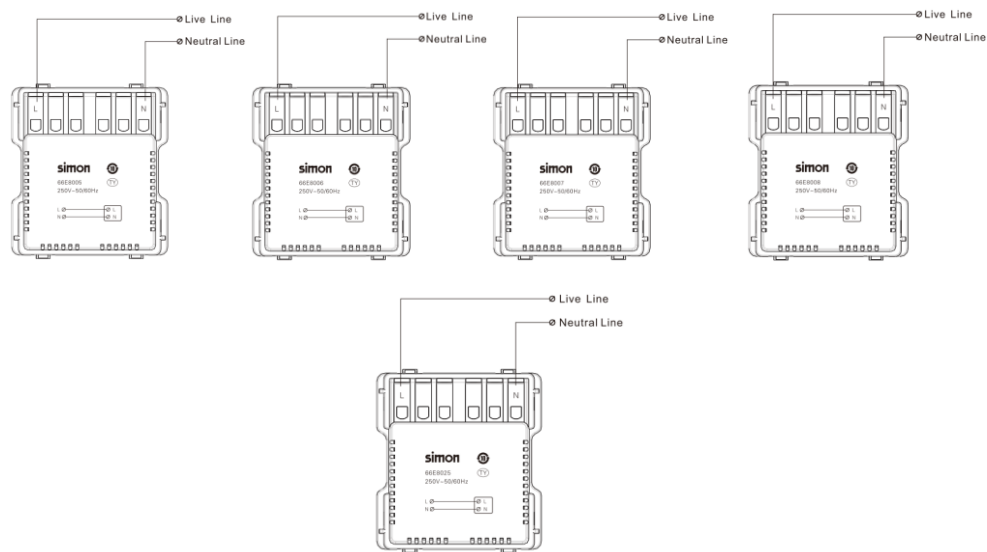
Initial power on	ON for 1s
No pairing	4 flashes per second for 2s
No setting	2 flashes per second for 2s
Scenario mode	2 flashes per second for 2s
Multi-control mode	Short press to turn ON/OFF

## 4.2 M7 Smart Scene Switch

Code	Description
66E8005TY	1 Gang Smart Scene Switch
66E8006TY	2 Gang Smart Scene Switch
66E8007TY	3 Gang Smart Scene Switch
66E8008TY	4 Gang Smart Scene Switch
66E8025TY	8 Gang Smart Scene Switch

### Installation Environment:

- Only need to connect to L&N line in the mounting box, no need to connect lights(no load)



### Preparation for Use:

- Ensure that the smart gateway has been added.
- Mobile phone is connected to Internet (Wi-Fi or 3G/4G/5G)
- Ensure effective coverage of ZigBee network. (Communication distance between any ZigBee devices: <2 walls, <100m in open area)

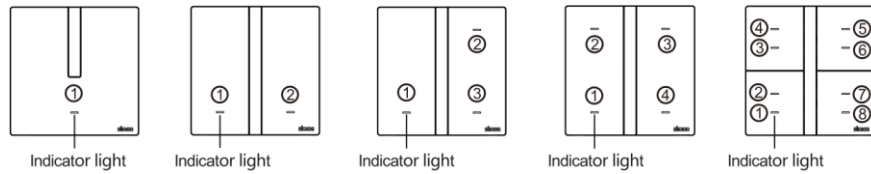
### Network Configuration:

- Download and open Simon Smart APP

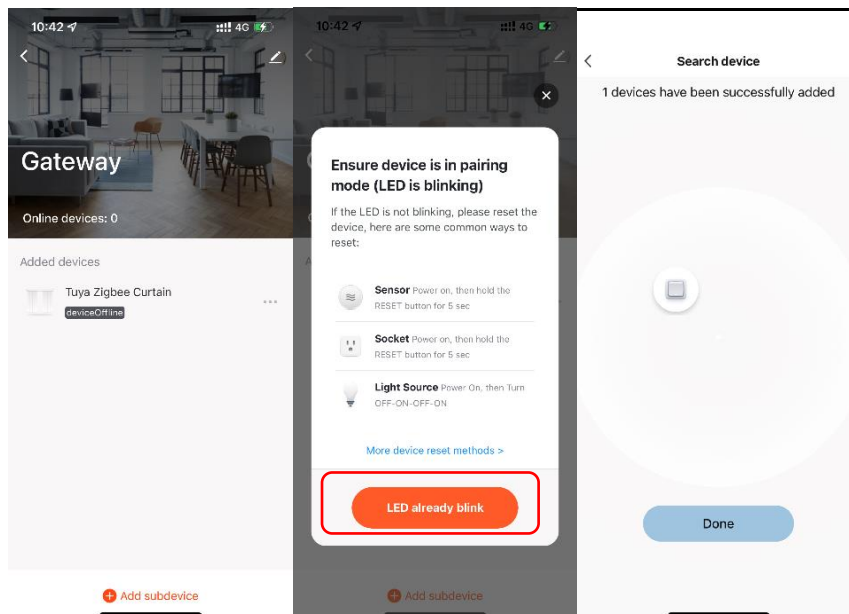


- After connecting the power, long press the first gang button no less than 3 seconds until the indicator is blinking. Add the device as per the app instructions. If it is not added after 180 seconds, please repeat the steps.

## Simon-Smart Installation Manual



- If not flashes, press the first gang button 4 times within 4 seconds, until the indicator blinks 4 times within 4 seconds. When the indicator is blinking at such frequency, long press the first gang button for 10 seconds until the indicator blinks 2 times within 2 seconds in white light, which indicates the device is reset.
- Open Simon Smart APP, enter the "Gateway" interface and click "Add Subdevice"
- Confirm that indicator is blinking, then click "LED already blink"
- Add the device as per the app prompts



### Configuration Indicator Status:

	Indicator on button	Effect indicator
Waiting pairing	4 quick flashes per second in white color	Gradually brightens from bottom to top
Pairing success	2 flashes per second for 2s in white color	All on, flash twice per second and off after 2s.
Pairing failure	1 flash per second for 10s	Off
Initial power on	ON for 10s in white color	ON for 1s
Not connect	Upon the button is pressed, the indicator on button blinks 4 times per second for 2s and then executes proximity sensing logic.	No response

## Simon-Smart Installation Manual

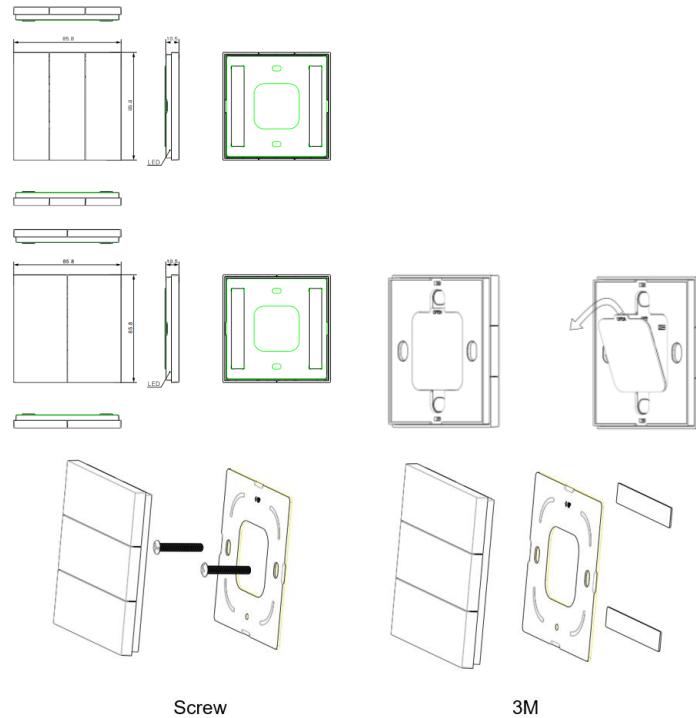
Scene mode is not configured	Upon the button is pressed, the indicator on button blinks twice per second for 2s and then executes proximity sensing logic.	No response
Scene mode is configured	Upon the button is pressed, the corresponding indicator switches from white color to orange, and on for 2s.	In and out blink once per second and off after 2s.
Multi-control is configured	Upon the button is pressed, the corresponding indicator syncs with the switch indicator status.	No response
Proximity Sensing	Default configuration: Upon human presence is detected, the indicator light up in white color for 10s.	No response

## 4.3 Remote Control Scene Switch

Code	Description
681820TY	6 Gang Remote Control Scene Switch
681832TY	2 Gang Remote Control Scene Switch

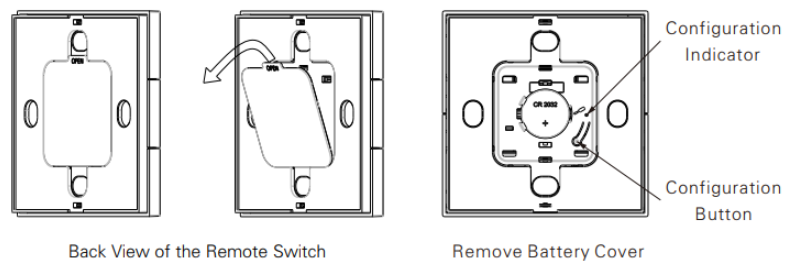
### Installation Environment:

- Support magnetic suction installation and 3M gum installation
- Remove the battery isolation strip before use



### Preparation for Use:

- Ensure that the smart gateway has been added.
- Mobile phone is connected to Internet (Wi-Fi or 3G/4G/5G)
- Ensure effective coverage of ZigBee network. (Communication distance between any ZigBee devices: <2 walls, <100m in open area)

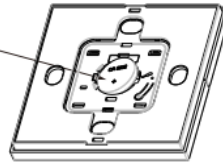


Remarks: This device is powered by the CR 2032 battery. Before use, remove the battery cover as shown in the figure above and after removing the battery insulation bar, put the back cover on .



# Simon-Smart Installation Manual

Do not use any tools to touch this battery contact piece



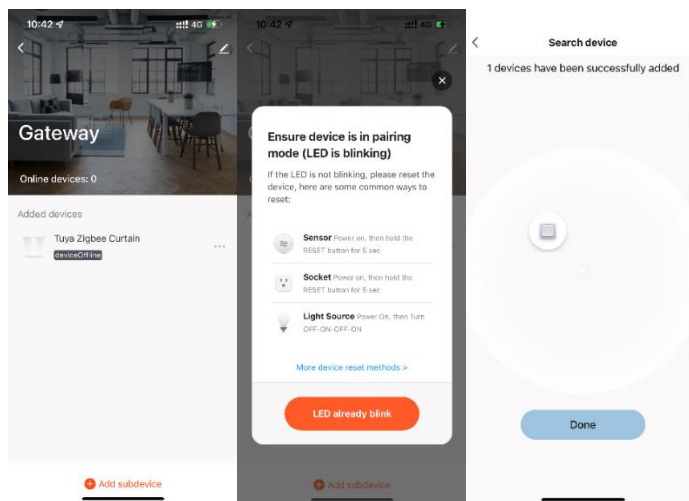
Please disassemble the battery as shown in the Diagram

## Network Configuration:

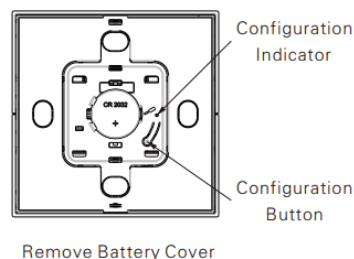
- Download and open Simon Smart APP



- Open Simon Smart APP, enter the "Gateway" interface and click "Add Subdevice"



- After confirming that the switch is powered on, press and hold the Configuration button for more than 3 seconds until the corresponding Configuration indicator flashes.



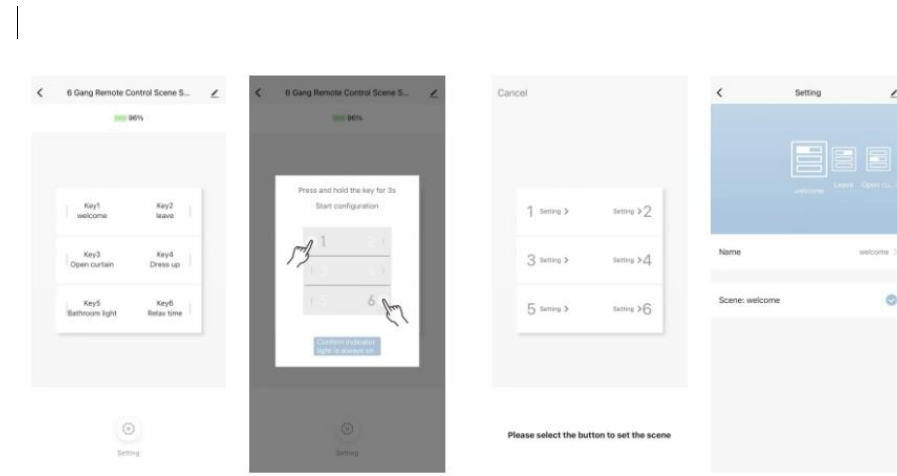
- Add the device by following the App's instructions. If it still does not connect to the network after 180 seconds, please try again
- Withdrawal Instructions: if the local device needs to withdraw from the network, press and hold the configuration button for more than 20

## Simon-Smart Installation Manual

---

seconds until the configuration indicator flashes at a frequency of 2 Hz for 2 seconds, indicating successful withdrawal from the network.

- Scene setting followed by APP instruction



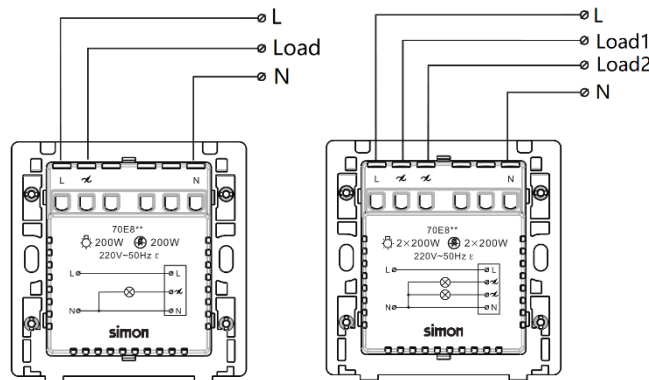
## 5 Smart Dimming Switch

### 5.1 17 Smart Dimming Switch (Triac light)

Code	Description
70E848TY	1 Gang Smart Dimming Switch Module
70E849TY	2 Gang Smart Dimming Switch Module

#### Installation Environment:

- Need to connect to L&N line in the mounting box
- Need to connect to load, TRIAC lighting



#### Preparation for Use:

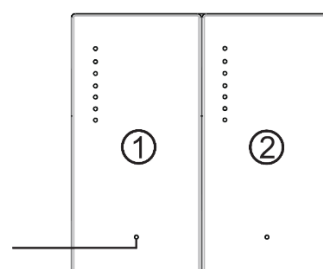
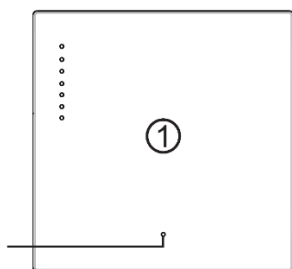
- Ensure that the smart gateway has been added.
- Mobile phone is connected to Internet (Wi-Fi or 3G/4G/5G)
- Ensure effective coverage of ZigBee network. (Communication distance between any ZigBee devices: <2 walls, <100m in open area)

#### Network Configuration:

- Download and open Simon Smart APP

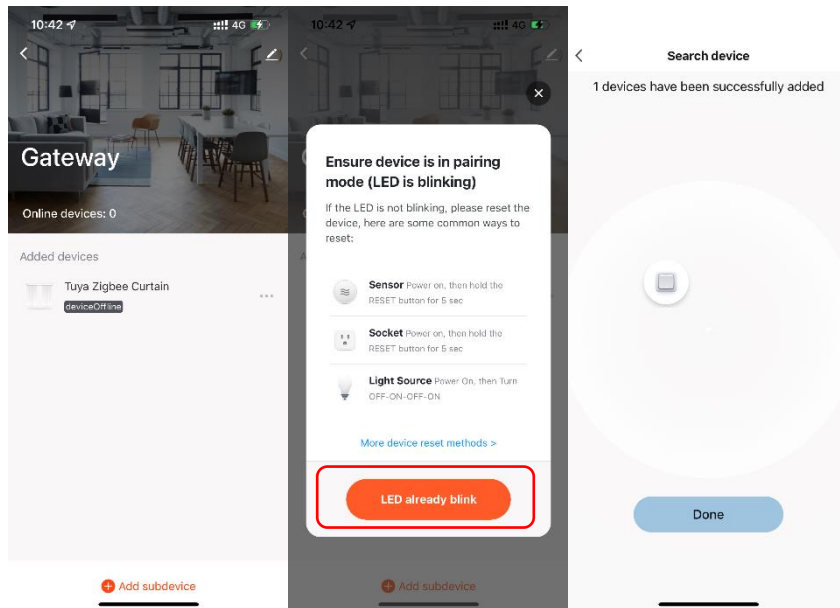


- Within 60s after connecting the power, long press the configuration button for more than 3s until the configuration indicator flashes
- If not flashes, long press the configuration button for more than 20s until the configuration indicator flashes



## Simon-Smart Installation Manual

- Enter the “Gateway” interface and click “Add Subdevice”
- Confirm that indicator is blinking, then click “LED already blink”
- Add the device as per the app prompts



### Configuration Indicator Status:

Waiting pairing	4 quick flashes per second
Pairing success	2 flashes per second for 2s
Pairing failure	1 flash per second for 10s
Initial power on	ON for 1s
Reset success	2 flashes per second for 2s

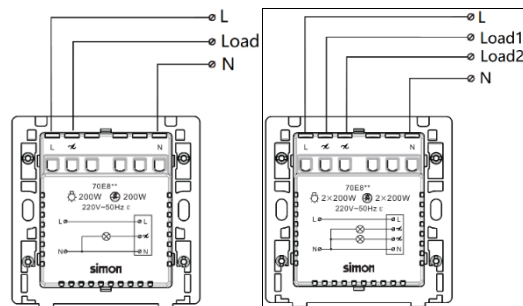
## Simon-Smart Installation Manual

### 5.2 M3/E3 Smart Dimming Switch (Triac light)

Code	Description
30E815TY	1 Gang Smart Dimming Switch(E3)
30E816TY	2 Gang Smart Dimming Switch(E3)
58E8015TY	1 Gang Smart Dimming Switch(M3)
58E8016TY	2 Gang Smart Dimming Switch(M3)

#### Installation Environment:

- Need to connect to L&N line in the mounting box
- Need to connect to load, TRIAC lighting



#### Preparation for Use:

- Ensure that the smart gateway has been added.
- Mobile phone is connected to Internet (Wi-Fi or 3G/4G/5G)
- Ensure effective coverage of ZigBee network. (Communication distance between any ZigBee devices: <2 walls, <100m in open area)

#### Network Configuration:

- Download and open Simon Smart APP



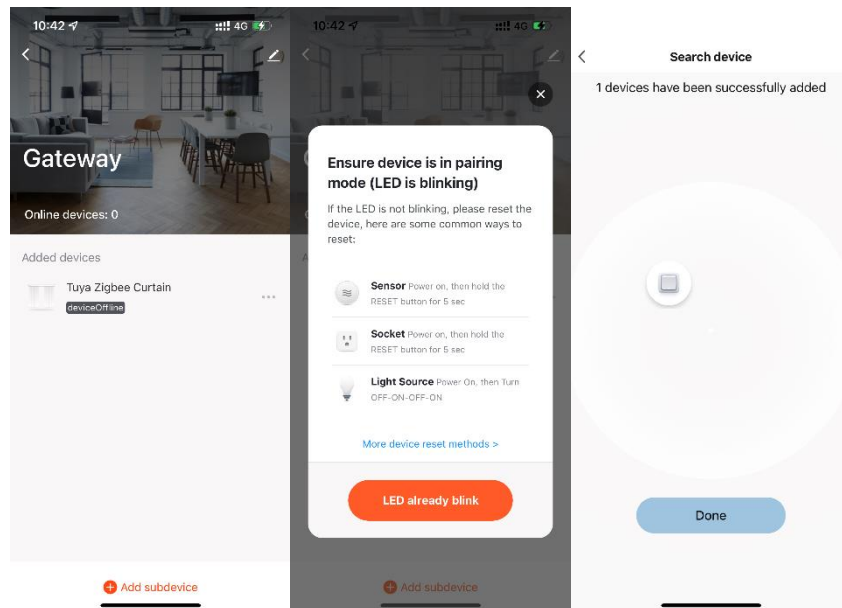
- Within 60s after connecting the power, insert the pin to long press the configuration hole for more than 3s until the configuration indicator flashes
- If not flashes or you want to reset, insert the pin to long press the configuration hole for more than 5s until the configuration indicator flashes



- Enter the "Gateway" interface and click "Add Subdevice"

## Simon-Smart Installation Manual

- Confirm that indicator is blinking, then click “LED already blink”
- Add the device as per the app prompts



### Configuration Indicator Status:

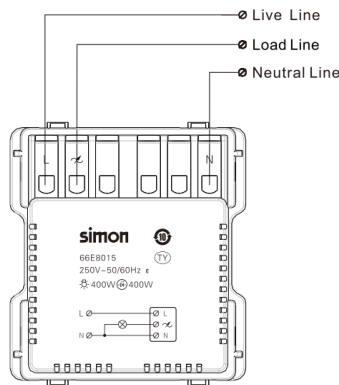
Waiting pairing	4 quick flashes per second
Pairing success	2 flashes per second for 2s
Pairing failure	1 flash per second for 10s
Initial power on	ON for 1s
Reset success	2 flashes per second for 2s

### 5.3 M7 Smart Dimming Switch (Triac light)

Code	Description
66E8015TY	1 Gang Smart Dimming Switch

#### Installation Environment:

- Need to connect to L&N line in the mounting box
- Need to connect to load, TRIAC lighting



#### Preparation for Use:

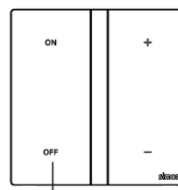
- Ensure that the smart gateway has been added.
- Mobile phone is connected to Internet (Wi-Fi or 3G/4G/5G)
- Ensure effective coverage of ZigBee network. (Communication distance between any ZigBee devices: <2 walls, <100m in open area)

#### Network Configuration:

- Download and open Simon Smart APP



- After connecting the power, long press the left bottom button no less than 3 seconds until the indicator is blinking. Add the device as per the app instructions. If it is not added after 180 seconds, please repeat the steps.



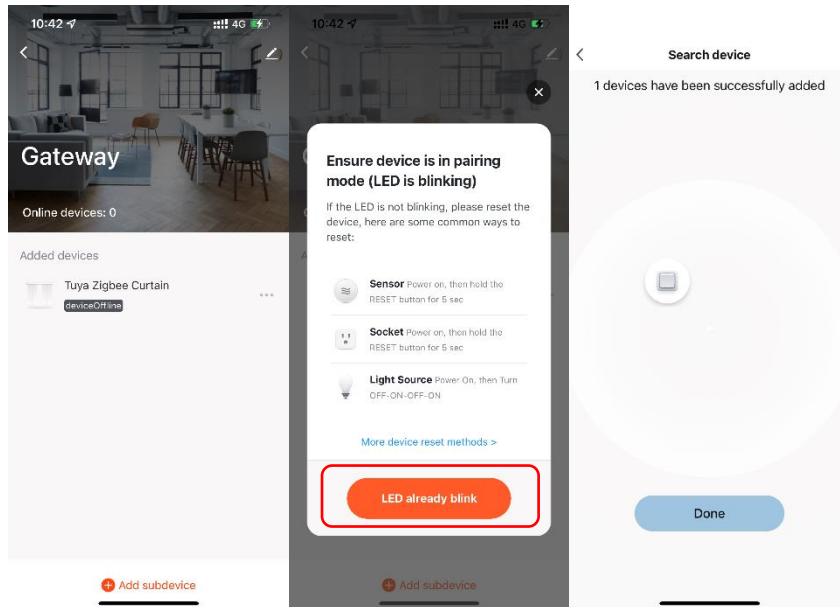
Indicator light

- If not flashes, press the left bottom button 4 times within 4 seconds, until the indicator blinks 4 times within 4 seconds. When the indicator is blinking at such frequency, long press the left bottom button for 10

## Simon-Smart Installation Manual

seconds until the indicator blinks 2 times within 2 seconds in white light, which indicates the device is reset.

- Open Simon Smart APP, enter the “Gateway” interface and click “Add Subdevice”
- Confirm that indicator is blinking, then click “LED already blink”
- Add the device as per the app prompts



### ■ Configuration Indicator Status:

	Indicator on button	Effect indicator
Waiting pairing	4 quick flashes per second in white color	Gradually brightens from bottom to top
Pairing success	2 flashes per second for 2s in white color	All on and flash twice per second and off after 2s, then display set brightness
Pairing failure	1 flash per second for 10s	Display set brightness
Initial power on	ON for 10s in white color	Display set brightness for 10s, then off
Reset success	2 flashes per second for 2s in white color	Display set brightness and it's 100%
Dimming button	When the button is pressed, the white light of the corresponding button goes out and the orange light lights up.	Live display set brightness
Proximity Sensing	Default setting parameters: when a person approaches, the orange light of the button corresponding to current switch status lights up, and the white light of buttons that are not in the current switch status lights up, all light keep 10s then go out. The white light of the dimming button	Display set brightness



**Simon-Smart Installation Manual**

	lights up when a person approaches and keeps 10s then goes out.	
--	---	--

## Simon-Smart Installation Manual

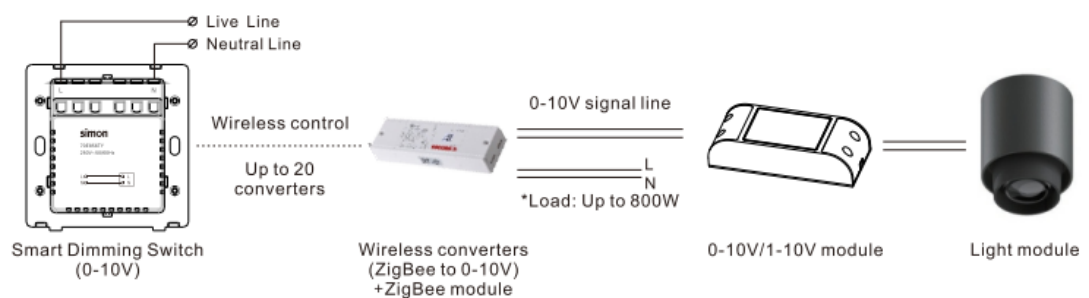
### 5.4 17 Smart Dimming Switch (No load/ ZigBee to 0-10V set)

Code	Description
70E856TY	1 Gang Smart Dimming Switch(0/1-10V)
70E857TY	2 Gang Smart Dimming Switch(0/1-10V)

#### Installation Environment:

- Only need to connect with L/N wire
- Need use with Simon wireless converter(ZigBee to 0/1-10V)and ZigBee module((dimming 0/1-10V) )(N65E0-0018)
- ZigBee module can be controlled by APP or dimming switch
- Compatible with any 0/1-10V dimming light

#### Wiring Diagram of Smart Dimming Switch (ZigBee to 0-10V set)



ZigBee module can be controlled by APP or dimming switch

#### Preparation for Use:

- Ensure that the smart gateway has been added and update to the new version via APP.
- Mobile phone is connected to Internet (Wi-Fi or 3G/4G/5G)
- Ensure effective coverage of ZigBee network. (Communication distance between any ZigBee devices: <2 walls, <100m in open area)
- Ensure smart dimming switch and ZigBee module are under the same gateway

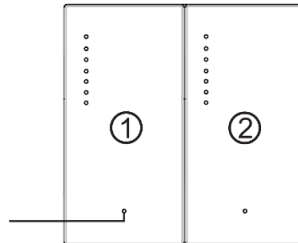
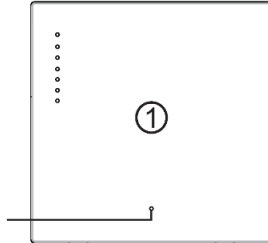
#### Network Configuration:

- **Dimming switch (Step1)**
  - Download and open Simon Smart APP

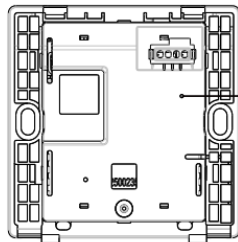
## Simon-Smart Installation Manual



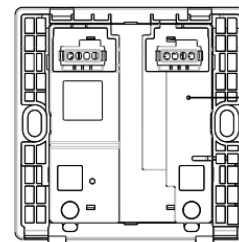
- Long press the left bottom button of switch for more than 3s until the configuration indicator flashes



- Enter the "Gateway" interface and click "Add Subdevice"  
Confirm that indicator is blinking, then click "LED already blink"
- If not flashes, remove the cover and insert the pin into the reset hole until the configuration indicator flashes.

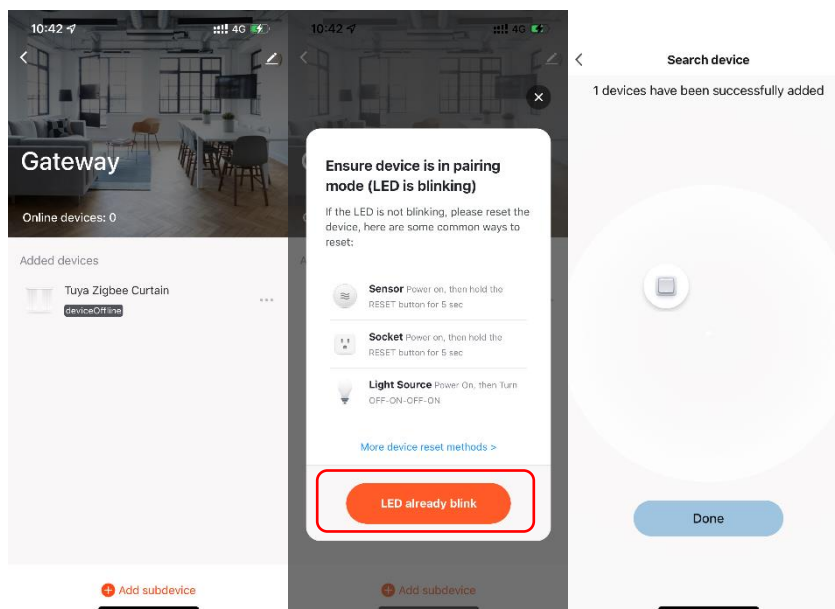


Reset hole



Reset hole

- Add the device as per the app prompts



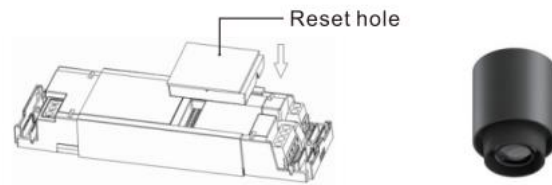
### Network Configuration:

#### ■ ZigBee module (step 2)

- Insert the pin into the reset hole on the ZigBee module for more than 5s to enter the pairing process

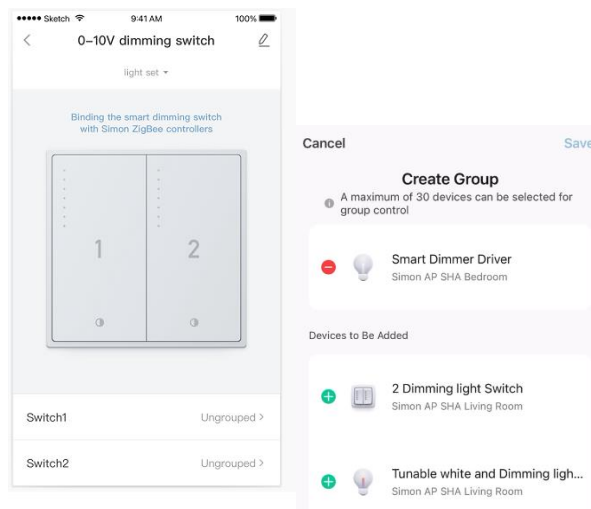
## Simon-Smart Installation Manual

- Enter the “Gateway” interface and click “Add Subdevice”
- Confirm that indicator is blinking, then click “LED already blink”
- Add the device as per the app prompts



### ■ Pairing the smart switch with the ZigBee module (step 3)

- Enter the smart dimming switch surface and click the top right button.
- Pairing the ZigBee module as per the app prompts



### Configuration Indicator Status:

Waiting pairing	4 quick flashes per second
Pairing success	2 flashes per second for 2s
Pairing failure	1 flash per second for 10s
Initial power on	ON for 1s
Reset success	2 flashes per second for 2s

### 5.5 I7/M3 Smart Tunable White and Dimming Switch (No load/ ZigBee control)

Code	Description
70E853TY	Smart Tunable Dimming Switch Module(i7)
58E8017TY	Smart Tunable Dimming Switch(M3)

#### Installation Environment:

- Only need to connect with L/N wire
- Compatible with Simon smart(ZigBee control) light like KC1
- ZigBee module can be controlled by APP or dimming switch

#### Wiring Diagram of Smart Tunable White and Dimming Switch (No load/ZigBee control)



#### Preparation for Use:

- Ensure that the smart gateway has been added.
- Mobile phone is connected to Internet (Wi-Fi or 3G/4G/5G)
- Ensure effective coverage of ZigBee network. (Communication distance between any ZigBee devices: <2 walls, <100m in open area)
- Ensure smart dimming switch and ZigBee module are under the same gateway

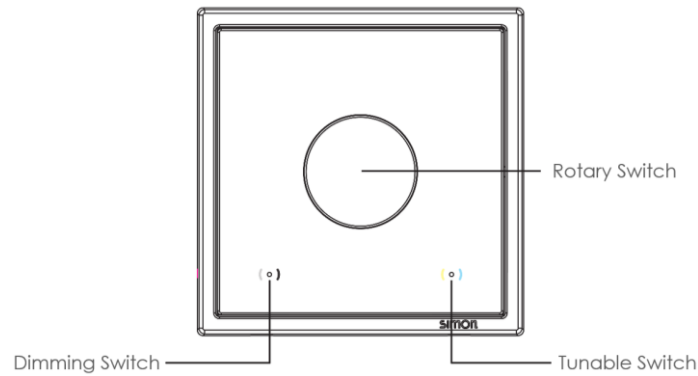
#### Network Configuration:

##### ■ Dimming switch (step 1)

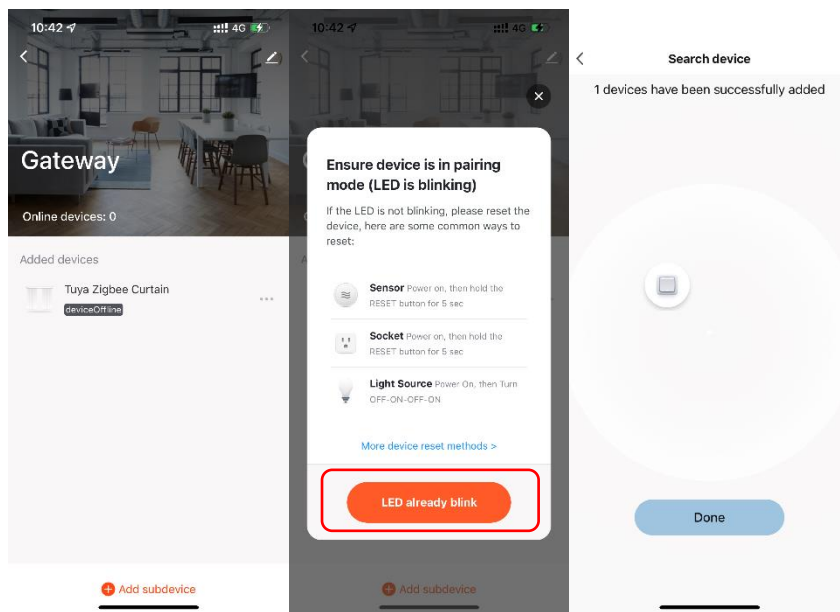
- Download and open Simon Smart APP



- Long press the rotary switch for more than 3s until the indicator of dimming switch flashes



- Enter the “Gateway” interface and click “Add Subdevice”
- Confirm that indicator is blinking, then click “LED already blink”
- Add the device as per the app prompts

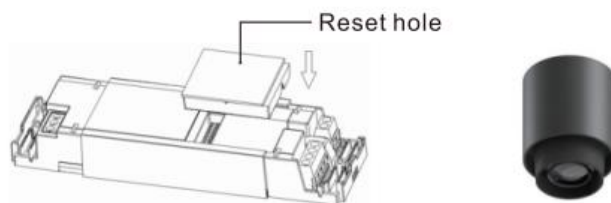


- After finishing the adding, find and enter the device interface

### Network Configuration:

#### ■ ZigBee module (step 2)

- Insert the pin into the reset hole on the ZigBee module for more than 5s to enter the pairing process
- Enter the “Gateway” interface and click “Add Subdevice”
- Confirm that indicator is blinking, then click “LED already blink”
- Add the device as per the app prompts

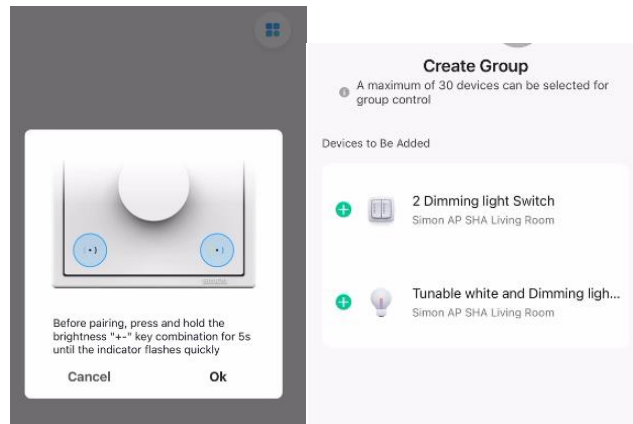


#### ■ Pairing the smart switch with the ZigBee module (step 3)

## Simon-Smart Installation Manual

---

- Enter the smart tunable white and dimming switch surface and click the top right button.
- Pairing the ZigBee module as per the app prompts



### Configuration Indicator Status:

Waiting pairing	Left indicator, 4 quick flashes per second
Pairing success	Left indicator, 2 flashes per second for 2s
Pairing failure	Left indicator, 1 flash per second for 10s
Initial power on	Left and right indicators, ON for 3s
Connecting driver	Left and right indicators, flash alternately

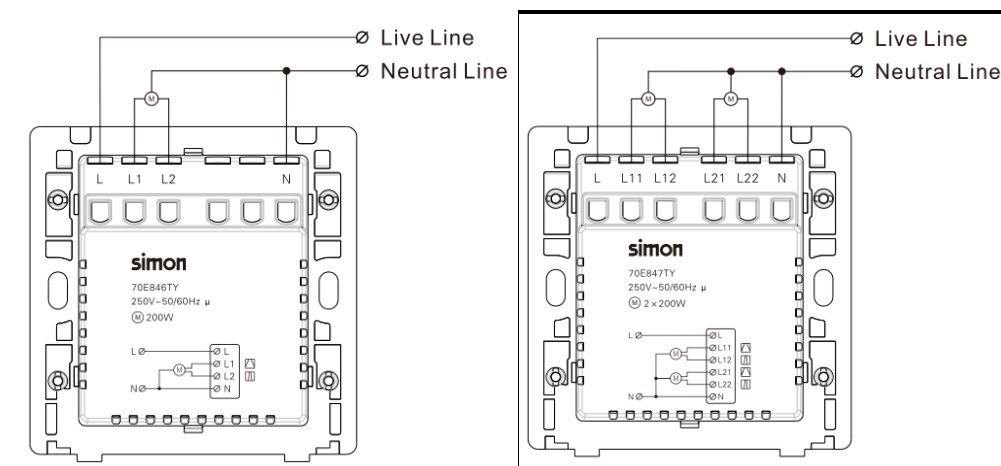
## 6 Smart Curtain Switch

### 6.1 Smart Curtain Switch (Load: High voltage curtain motor)

Code	Description
70E846TY	1 Gang Smart Curtain Switch Module
70E847TY	2 Gang Smart Curtain Switch Module
58E8013TY	1 Gang Smart Curtain Switch
58E8014TY	2 Gang Smart Curtain Switch
30E813TY	1 Gang Smart Curtain Switch
30E814TY	2 Gang Smart Curtain Switch

#### Installation Environment:

- Need to connect to L&N line in the mounting box
- Need to connect to load: 4/5wire strong current motor(choose the strong current motor can connect the smart curtain switch( Positive+ Negative control line))



#### Preparation for Use:

- Ensure that the smart gateway has been added.
- Mobile phone is connected to Internet (Wi-Fi or 3G/4G/5G)
- Ensure effective coverage of ZigBee network. (Communication distance between any ZigBee devices: <2 walls, <100m in open area)

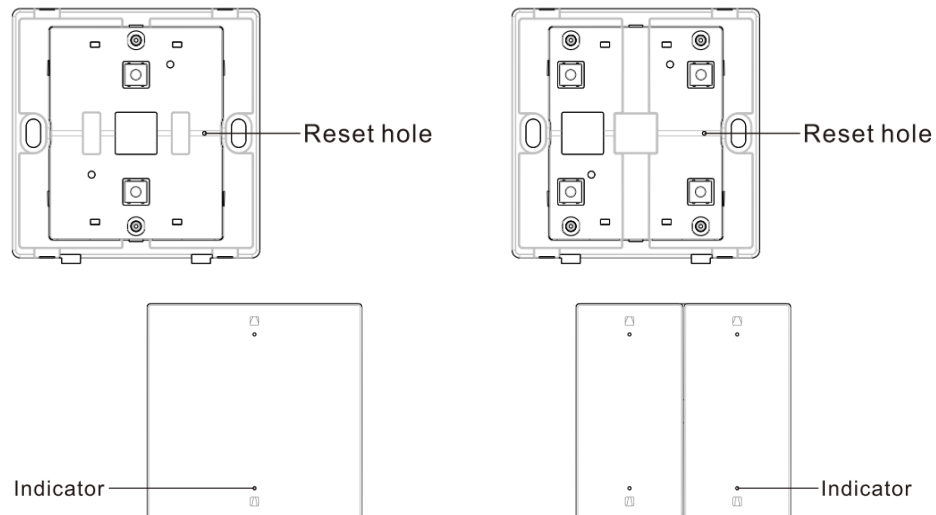
#### Network Configuration:

- Download and open Simon Smart APP

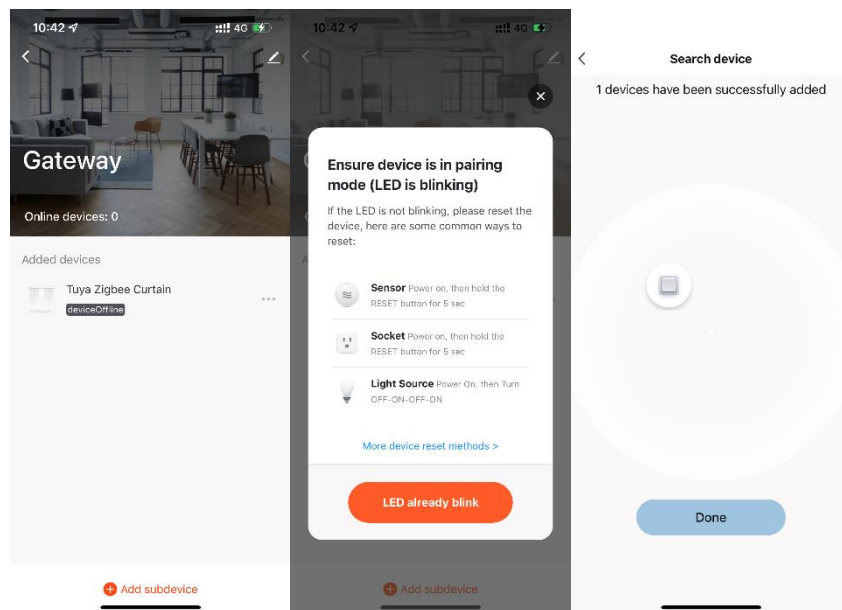


- Within 60s after connecting the power, insert the pin to long press the configuration hole for more than 3s until the configuration indicator flashes.





- If not flashes or you want to reset, insert the pin to long press the configuration hole for more than 5s until the configuration indicator flashes
- Enter the "Gateway" interface and click "Add Subdevice"
- Confirm that indicator is blinking, then click "LED already blink"
- Add the device as per the app prompts



### Configuration Indicator Status:

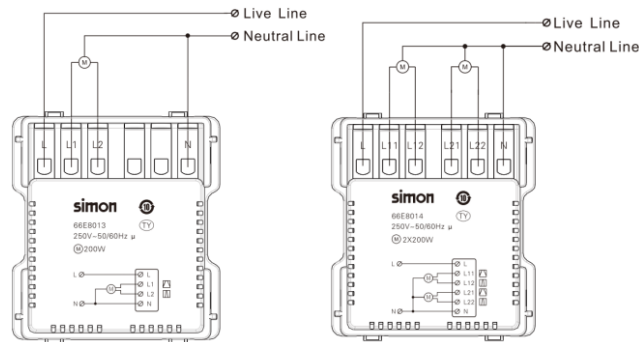
Waiting pairing	4 quick flashes per second
Pairing success	2 flashes per second for 2s
Pairing failure	1 flash per second for 10s
Initial power on	ON for 1s
Reset success	2 flashes per second for 2s

## 6.2 M7 Smart Curtain Switch (Load: High voltage curtain motor)

Code	Description
66E8013TY	1 Gang Smart Curtain Switch
66E8014TY	2 Gang Smart Curtain Switch

### Installation Environment:

- Need to connect to L&N line in the mounting box
- Need to connect to load: 4/5wire strong current motor(choose the strong current motor can connect the smart curtain switch( Positive+ Negative control line)



### Preparation for Use:

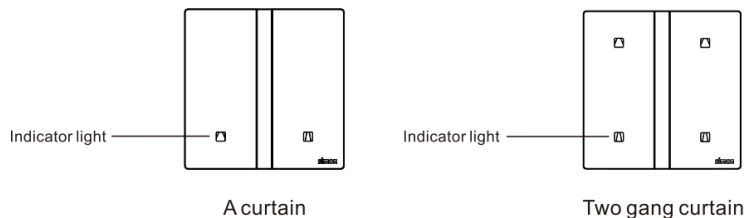
- Ensure that the smart gateway has been added.
- Mobile phone is connected to Internet (Wi-Fi or 3G/4G/5G)
- Ensure effective coverage of ZigBee network. (Communication distance between any ZigBee devices: <2 walls, <100m in open area)

### Network Configuration:

- Download and open Simon Smart APP



- After connecting the power, long press the left bottom button no less than 3 seconds until the indicator is blinking. Add the device as per the app instructions. If it is not added after 180 seconds, please repeat the steps.

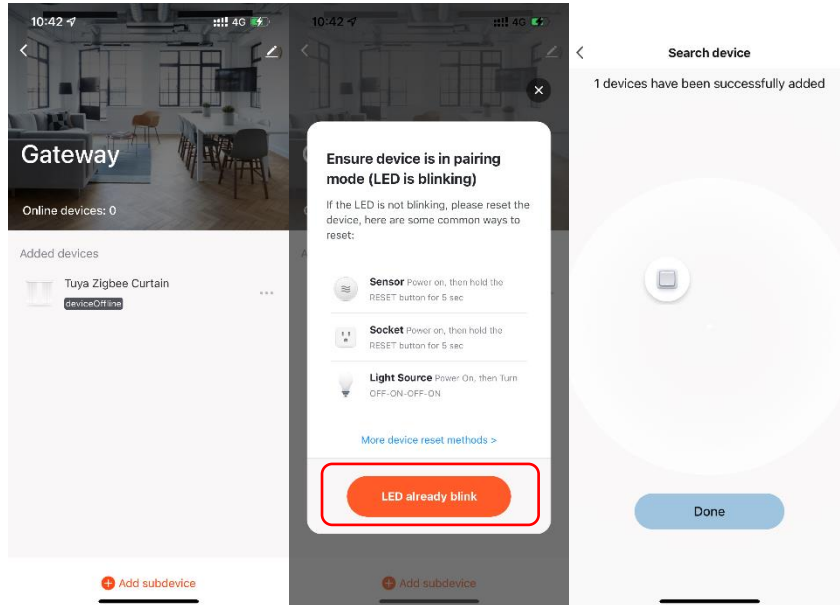


- If not flashes, press the left bottom button 4 times within 4 seconds, until the indicator blinks 4 times within 4 seconds. When the indicator is blinking at such frequency, long press the left bottom button for 10 seconds until the indicator blinks 2 times within 2 seconds in white light,

## Simon-Smart Installation Manual

which indicates the device is reset.

- Open Simon Smart APP, enter the “Gateway” interface and click “Add Subdevice”
- Confirm that indicator is blinking, then click “LED already blink”
- Add the device as per the app prompts



### ■ Configuration Indicator Status:

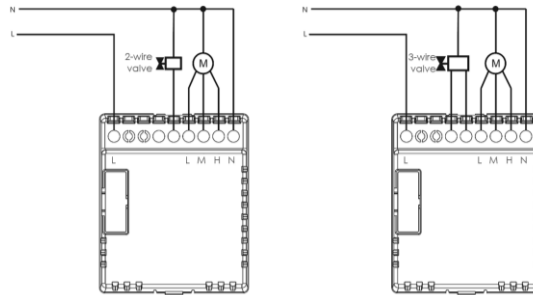
	Indicator on button	Effect indicator
Waiting pairing	4 quick flashes per second in white color	Gradually brightens from bottom to top
Pairing success	2 flashes per second for 2s in white color	All on and flash twice per second and off after 2s
Pairing failure	1 flash per second for 10s	OFF
Initial power on	All button indicators are ON for 10s	Light up 1s
Reset success	2 flashes per second for 2s in white color	Not response
“Curtain open” button	After a button is pressed, the indicator light color of the corresponding button is switched.	Gradually brightens from inside to outside
“Curtain close” button	After a button is pressed, the indicator light color of the corresponding button is switched.	Gradually brightens from outside to inside
Fully open / Completely closed	Default setting parameters : The white light corresponding to the button lights up	Full light flash twice per second and off after 2s
Proximity Sensing	Default setting parameters: when a person approaches, the white light turns on and off after 10s.	Not response

## 7 Smart Thermostat

Code	Description
70E7024TY	Smart Central-AC Thermostat Module(FCU)
30E706TY	Smart Central-AC Thermostat(FCU)
58E7101TY	Smart Central-AC Thermostat(FCU)

### Installation Environment:

- Connect directly to the valve and fan motor of FCU



### Preparation for Use:

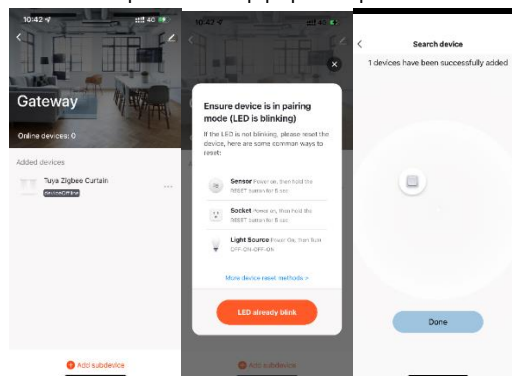
- Ensure that the smart gateway has been added.
- Mobile phone is connected to Internet (Wi-Fi or 3G/4G/5G)
- Ensure effective coverage of ZigBee network. (Communication distance between any ZigBee devices: <2 walls, <100m in open area)

### Network Configuration:

- Download and open Simon Smart APP



- With the off status, hold the “v” button for 3s until “📶” icon flashes
- Enter the “Gateway” interface and click “Add Subdevice”
- Confirm that indicator is blinking, then click “LED already blink”
- Add the device as per the app prompts



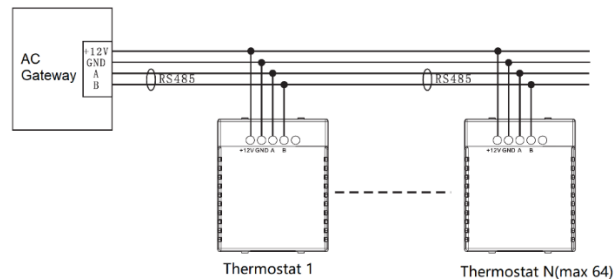
- When the “📶” icon turns from flashing to steady on, it means adding successfully

## Simon-Smart Installation Manual

Code	Description
70E7031TY	Smart AC Thermostat Module(VRV, Modbus)
58E7106TY	Smart AC Thermostat (VRV, Modbus)
30E711TY	Smart AC Thermostat(VRV, Modbus)

### Installation Environment:

- Connect to AC gateway as the wiring diagram show




### Preparation for Use:

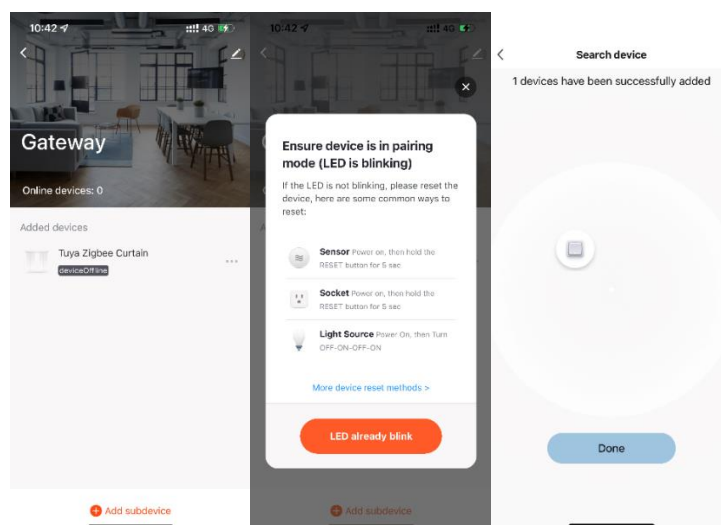
- Ensure that the smart gateway has been added.
- Mobile phone is connected to Internet (Wi-Fi or 3G/4G/5G)
- Ensure effective coverage of ZigBee network. (Communication distance between any ZigBee devices: <2 walls, <100m in open area)


### Network Configuration:

- Download and open Simon Smart APP



- With the off status, hold the “v” button for 3s until “” icon flashes
- Enter the “Gateway” interface and click “Add Subdevice”
- Confirm that indicator is blinking, then click “LED already blink”
- Add the device as per the app prompts



- When the “” icon turns from flashing to steady on, it means adding successfully

Note: AC gateway is customized case by case

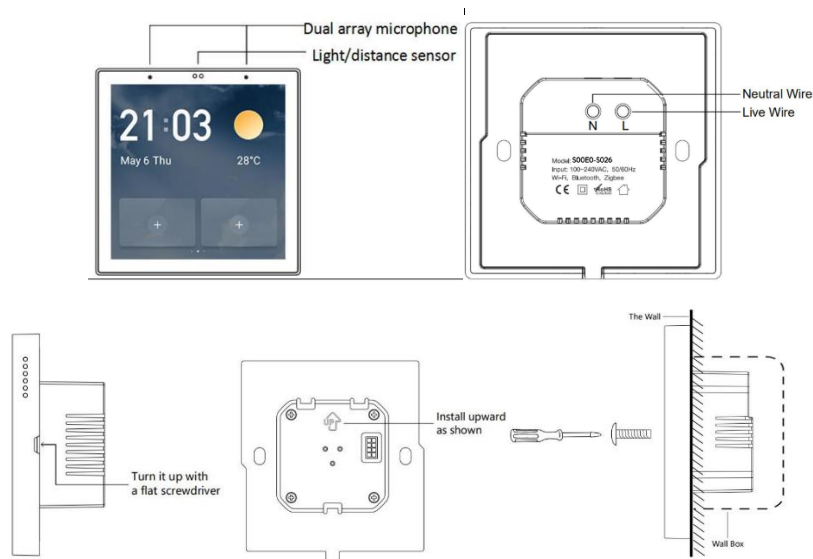
## 8 Multi-control panel

### 8.1 Simp pad86 multi-control panel with gateway

Code	Description
S00E0-S026	Simp pad86 multi-control panel with gateway

#### Installation Environment:

- Only need to connect to L&N line in the mounting box, no need to connect lights(no load)



#### Preparation for Use:

- Ensure the product is within the effective coverage of Wi-Fi network
- Ensure the Bluetooth function of your mobile phone is opened
- Mobile phone is connected to 2.4GHz Wi-Fi

#### Network Configuration:

- Download and open Simon Smart APP

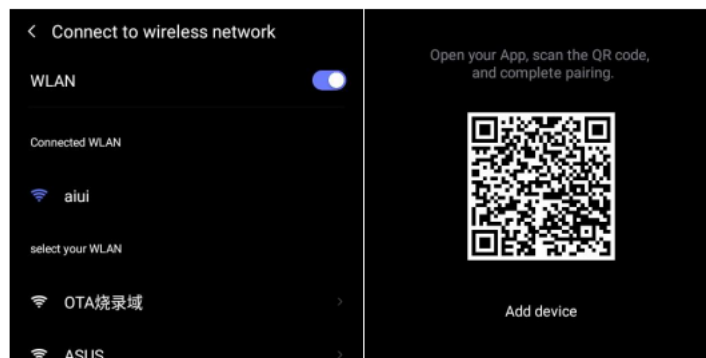


- After connecting the power, when you start it in the first time. You can also get into the network settings from the select menu by dropping down from the top of the LCD screen.

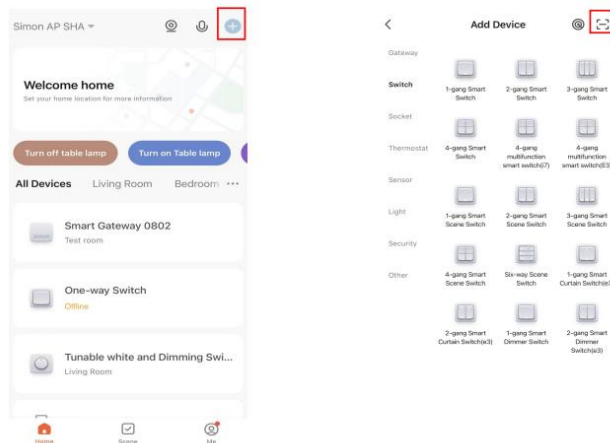
## Simon-Smart Installation Manual



- There are two options in the network settings. You can select wireless connection or wire connection. There will be a QR code showing on the screen after the network connection is done.

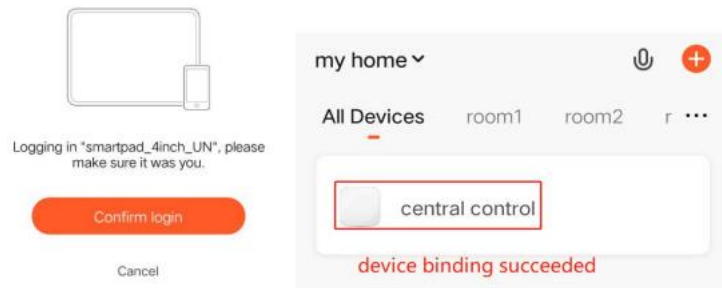


- Open Simon Smart APP, select "+" at top right corner in the App home page, and then select the "📱" at top right corner in the App page.

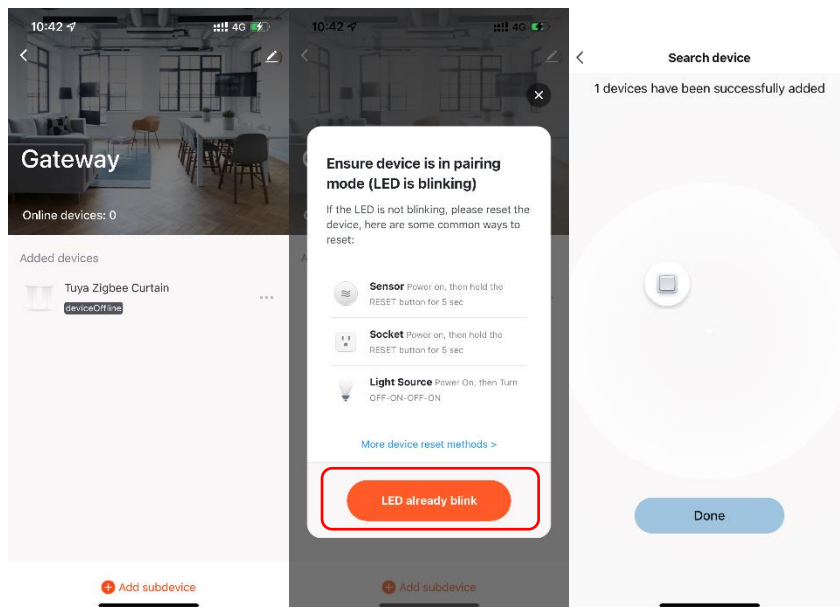


- Scan the QR code on the screen of the product to add it into the simon smart App.

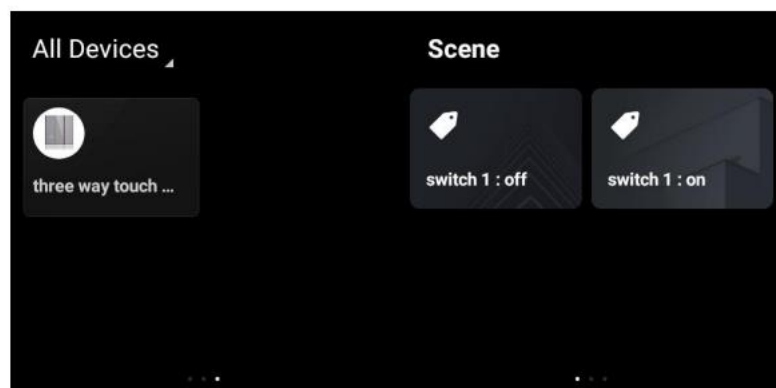
## Simon-Smart Installation Manual



- Open Simon Smart APP, find the “central control”, enter the “Gateway” interface and click “Add Subdevice”.
- Confirm that indicator is blinking, then click “LED already blink”
- Add the device as per the app prompts



- After adding smart devices successfully, then you can control the smart devices on the panel directly.



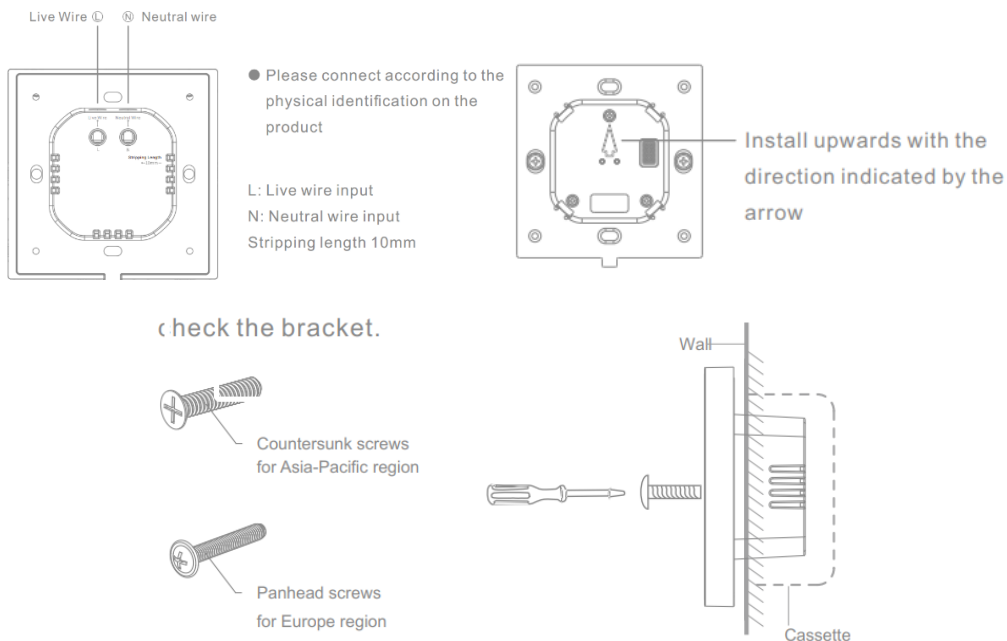


### 8.2 Simpadd plus with gateway (Alexa speaker)

Code	Description
S00E0-S042	Simpadd plus with gateway(Alexa speaker)

#### Installation Environment:

- Only need to connect to L&N line in the mounting box, no need to connect lights(no load)



#### Preparation for Use:

- Ensure the product is within the effective coverage of Wi-Fi network
- Ensure the Bluetooth function of your mobile phone is opened
- Mobile phone is connected to 2.4GHz Wi-Fi

#### Network Configuration:

- Download and open Simon Smart APP



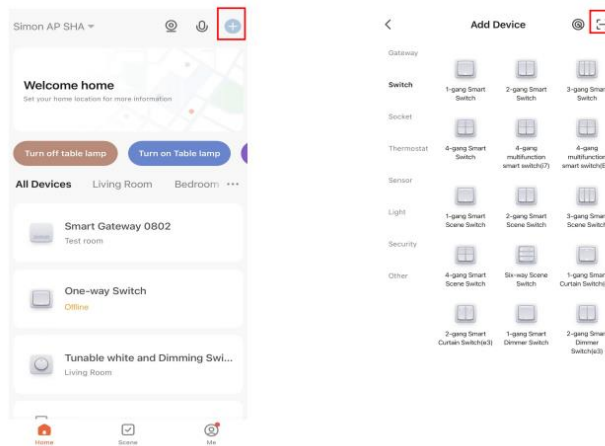
- After connecting the power, when you start it in the first time. Wait for the device to initiate. Connect to the network according to the instructions on the screen.
- Open the Simon Smart App, then scan the QR code on the device to configure the network (as shown in the figure below), and perform related operations according to the instructions on the device interface after the commission is successfully finished.

## Simon-Smart Installation Manual

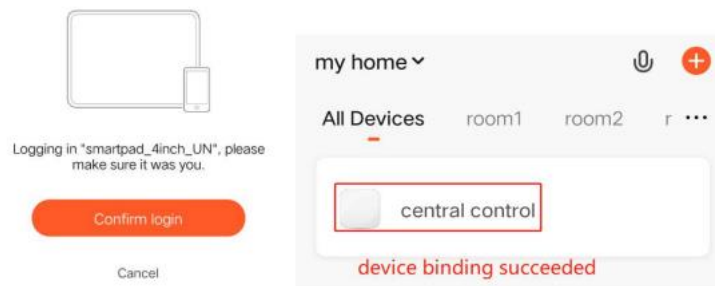


\*The QR code is based on the display of actual device

- Open Simon Smart APP, select "+" at top right corner in the App home page, and then select the "Add device" at top right corner in the App page.

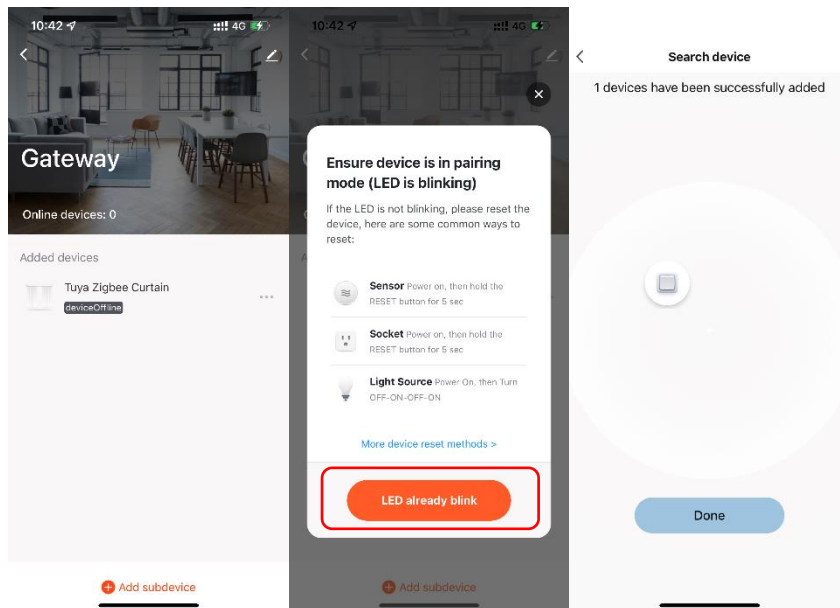


- Scan the QR code on the screen of the product to add it into the Simon Smart App.



- Open Simon Smart APP, find the "central control", enter the "Gateway" interface and click "Add Subdevice".
- Confirm that indicator is blinking, then click "LED already blink"
- Add the device as per the app prompts

## Simon-Smart Installation Manual



- After adding smart devices successfully, then you can control the smart devices on the panel directly.



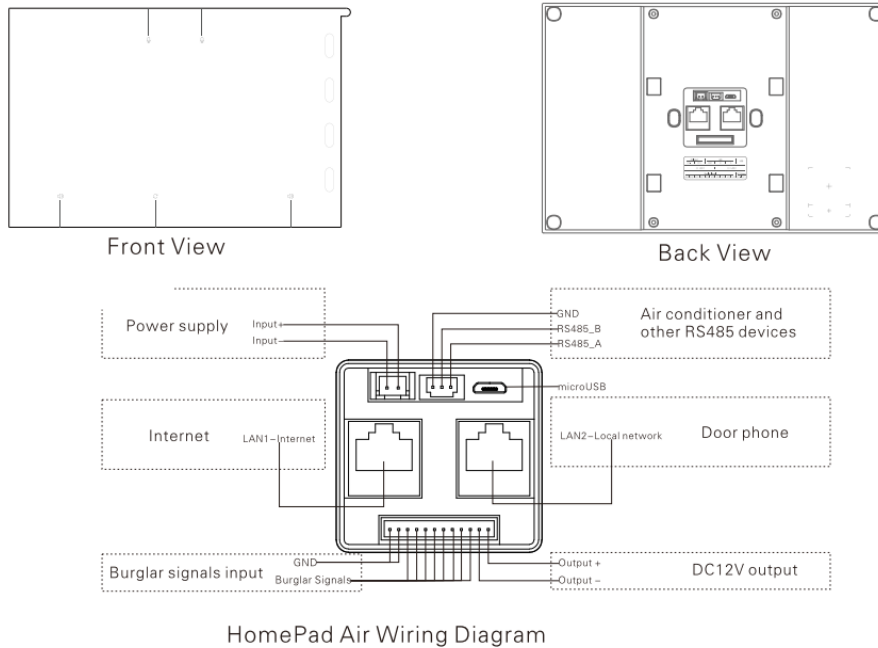
- Device/scene overview: enter the corresponding entry in the smart control panel page of the Simon Smart App, tick the devices or scenes that need to be displayed on the screen.
- Voice control: enter the corresponding entrance in the smart control panel page of the Simon Smart App to configure the vocal scene.
- Gateway function: enter the corresponding entrance in the smart control panel page of the Simon Smart App, and add Zigbee devices.
- Setting: slide down at the top of the Simpadd plus screen to call out the setting page.

## 8.3 Homepad air

Code	Description
680005TY-61	Homepad air

### Installation Environment:

- Support 12V power supply, To use the basic functions of the product, please connect to power supply and internet(LAN1 or WLAN)



### Preparation for Use:

- Ensure the product is within the effective coverage of 2.4GHz Wi-Fi/Ethernet network.

### Network Configuration:

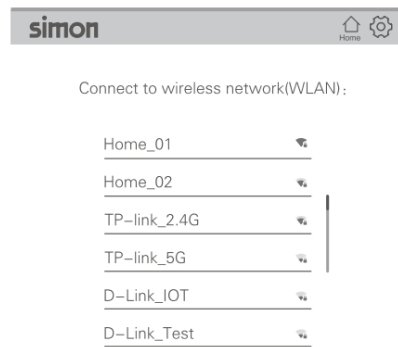
- Download and open Simon Smart APP



- After connecting the power, when you start it in the first time. Wait for the device to initiate. Connect to the network according to the instructions on the screen.
- If you use wired network, please insert the network cable into LAN1. If you use Wi-Fi to connect internet. Please make sure that your home Wi-Fi is working normally to ensure that the network pairing can be performed properly. The first time you turn on the Homepad air, please select the available 2.4GHz Wi-Fi for Homepad air pairing.

## Simon-Smart Installation Manual

---



- Connect to Simon Smart account  
Open the Simon Smart App on the phone, click "+" on the upper right, then click "Scan" on the upper right to scan the QR code and complete pairing.



## Simon-Smart Installation Manual

### 8.4 X3 Smart control panel

Code	Description
680070TY-61	4 Gang Smart Switch Vertical Control Panel(Grey)
680071TY-61	2 Gang Smart Curtain Switch Vertical Control Panel(Grey)
680072TY-61	2 Gang Smart Dimming Switch Vertical Control Panel(Grey)
680074TY-61	4 Gang Smart Switch Vertical Control Panel with Gateway(Grey)
680075TY-61	2 Gang Smart Curtain Switch Vertical Control Panel with Gateway(Grey)
680076TY-61	2 Gang Smart Dimming Switch Vertical Control Panel with Gateway(Grey)
680080TY-61	4 Gang Smart Switch Horizontal Control Panel(Grey)
680081TY-61	2 Gang Smart Curtain Switch Horizontal Control Panel(Grey)
680082TY-61	2 Gang Smart Dimming Switch Horizontal Control Panel(Grey)
680084TY-61	4 Gang Smart Switch Horizontal Control Panel with Gateway(Grey)
680085TY-61	2 Gang Smart Curtain Switch Horizontal Control Panel with Gateway(Grey)
680086TY-61	2 Gang Smart Dimming Switch Horizontal Control Panel with Gateway(Grey)
680087TY-61	Smart Thermostat Switch Horizontal Control Panel with Gateway(Grey)

#### Installation Environment:

- Need to connect to L&N line in the mounting box



Vertical Control Panel with gateway



Vertical Control Panel



Vertical Curtain control interface



Horizontal Control Panel with gateway



Horizontal Control Panel



Horizontal Curtain control interface



: Smart switch panel  
With built-in Gateway



: Smart switch panel  
Without gateway



4 Gang Smart Switch Control Panel(Grey)



4 Gang Smart Switch Control Panel with Gateway(Grey)



4 Gang Smart Curtain Switch Control Panel(Grey)



4 Gang Smart Curtain Switch Control Panel with Gateway(Grey)



4 Gang Smart Dimming Switch Control Panel(Grey)



4 Gang Smart Dimming Switch Control Panel with Gateway(Grey)

### Preparation for Use (with gateway):

- Ensure the product is within the effective coverage of Wi-Fi network
- Ensure that the smart gateway and mobile phone are under the same Wi-Fi network
- Mobile phone is connected to 2.4GHz Wi-Fi

### Preparation for Use (without gateway):

- Ensure the product is within the effective coverage of Wi-Fi network
- Ensure that the smart gateway and mobile phone are under the same

## Simon-Smart Installation Manual

Wi-Fi network

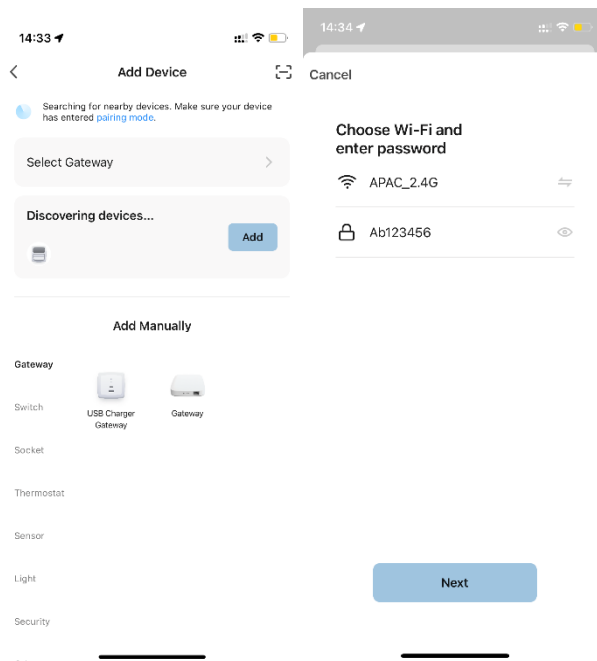
- Ensure that the smart gateway has been added
- Mobile phone is connected to Internet (Wi-Fi or 3G/4G/5G)

### Network Configuration (with gateway):

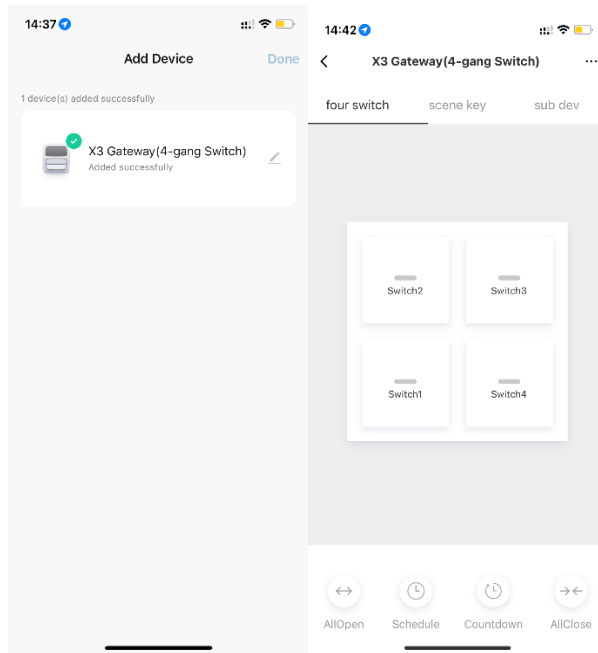
- Download and open Simon Smart APP



- Power on the gateway, Mobile phone is connected to 2.4GHz Wi-Fi, open the Bluetooth.
- Ensure that the smart gateway and mobile phone are under the same Wi-Fi network
- Open Simon Smart APP, click add button “+” on the top right corner on the home page
- A pop-up window will remind you to add a device and then select “Gateway”
- Add the device as per the app prompts
- After the X3 panel with built-in gateway is successfully added, it will appear in the “My Home” list.





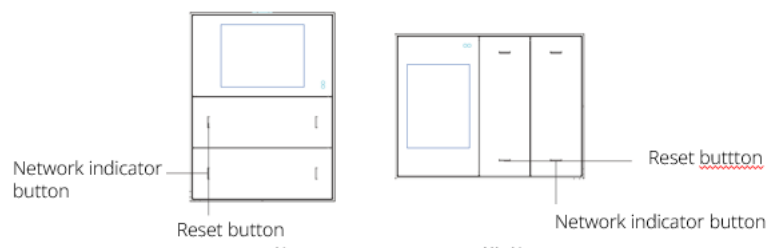


### Network Configuration(without gateway):

- Download and open Simon Smart APP

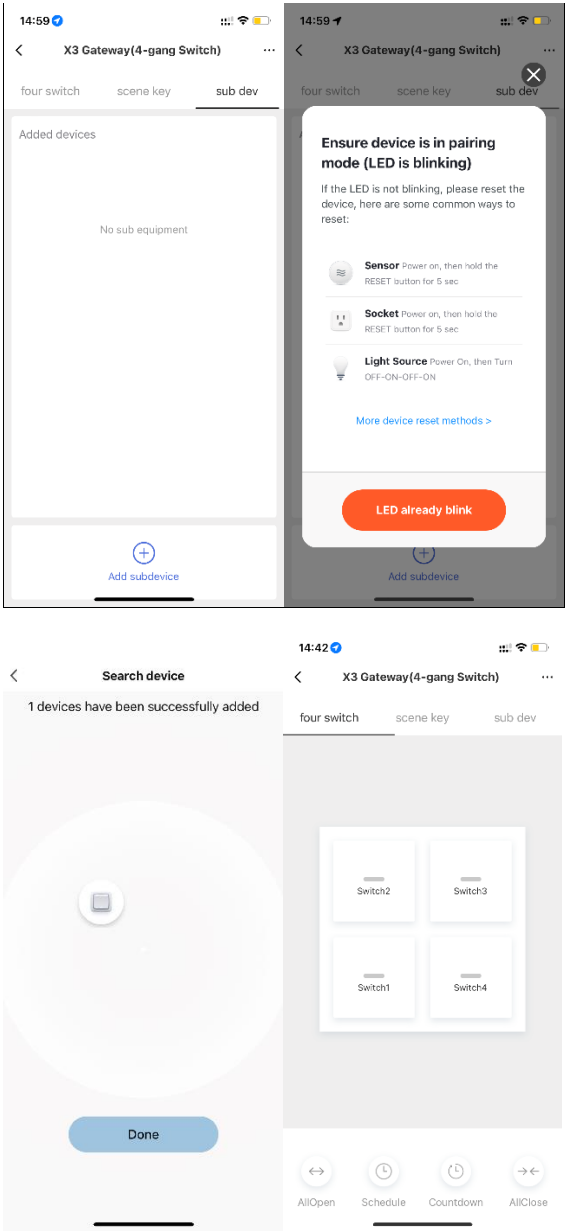


- Ensure that the smart gateway has been added
- Ensure that the smart gateway and mobile phone are under the same Wi-Fi network
- Open Simon Smart APP, enter the "X3 Gateway" interface and click "Add Subdevice"
- Long press the left reset buttons for 3s until the network indicator flashes.



- Add the X3 panel as per the app prompts
- After the X3 panel is successfully added, it will appear in the "Subdevice" under the "Gateway" interface

# Simon-Smart Installation Manual



## 9 Sensors

### 9.1 Smart Flammable Gas Detector

Code	Description
S2200-0901	Smart Flammable Gas Detector

#### Installation Environment:

- Need to connect to the socket

#### Preparation for Use:

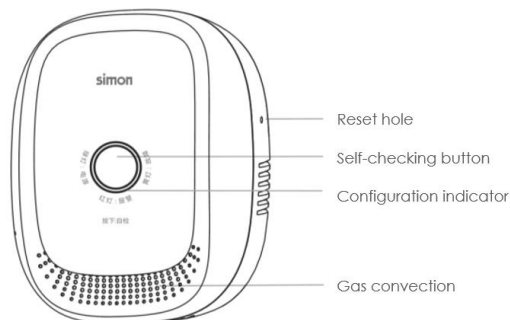
- Ensure that the smart gateway has been added.
- Mobile phone is connected to Internet (Wi-Fi or 3G/4G/5G)
- Ensure effective coverage of ZigBee network. (Communication distance between any ZigBee devices: <2 walls, <100m in open area)

#### Network Configuration:

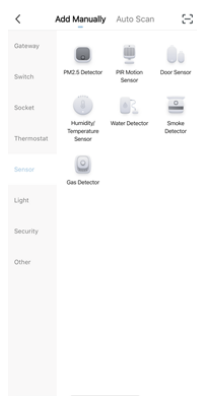
- Download and open Simon Smart APP



- Insert the pin into the reset hole for more than 5s until the configuration indicator flashes



- Click add button “+” on the top right corner on the home page, select “sensor” and then select “Gas Detector”
- Add the device as per the app prompts

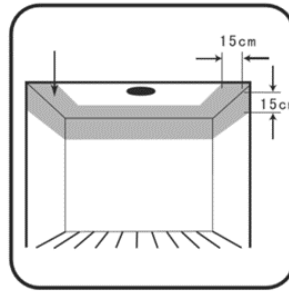


### 9.2 Smart Smoke Alarm Detector

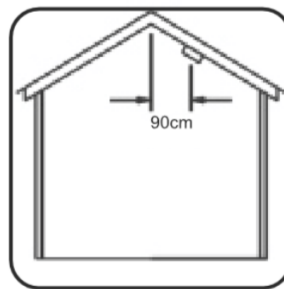
Code	Description
S2200-0902	Smart Smoke Alarm Detector

#### Installation Environment:

- Easy to install with powerful 3M gum
- Install in the middle of the ceiling is preferred
- Please keep at least 30cm away from lamps or ornaments
- Stay at least 15cm away from walls and corners



- It should be installed at both ends of the hall if the hall is more than 12m
- Mount on the ceiling 90cm from the top horizontal



#### Preparation for Use:

- Ensure that the smart gateway has been added.
- Mobile phone is connected to Internet (Wi-Fi or 3G/4G/5G)
- Ensure effective coverage of ZigBee network. (Communication distance between any ZigBee devices: <2 walls, <100m in open area)

#### Network Configuration:

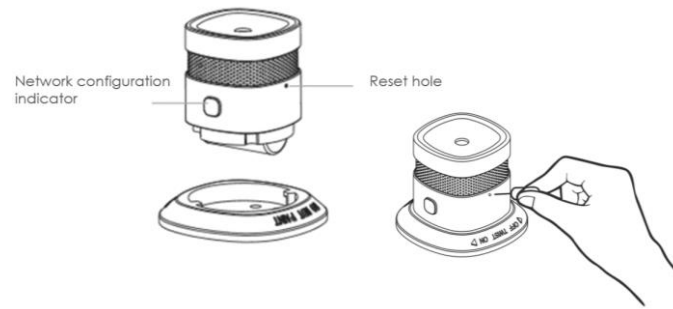
- Download and open Simon Smart APP



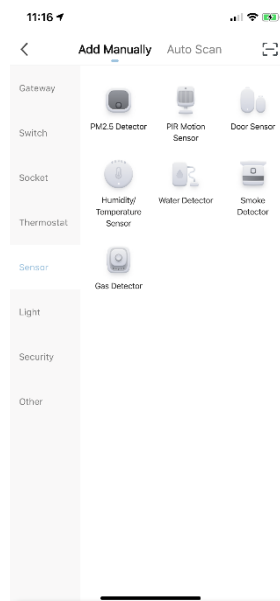
- Insert the pin into the reset hole for more than 5s until the configuration indicator flashes

## Simon-Smart Installation Manual

---



- Click add button “+” on the top right corner on the home page, select “sensor” and then select “Smoke Detector”
- Add the device as per the app prompts



### 9.3 Smart flood detector

Code	Description
S2200-0903	Smart flood detector

#### Installation Environment:

- Easy to install with powerful 3M gum
- IP67 international waterproof grade

#### Preparation for Use:

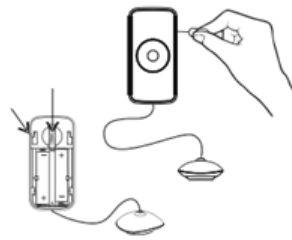
- Ensure that the smart gateway has been added.
- Mobile phone is connected to Internet (Wi-Fi or 3G/4G/5G)
- Ensure effective coverage of ZigBee network. (Communication distance between any ZigBee devices: <2 walls, <100m in open area)

#### Network Configuration:

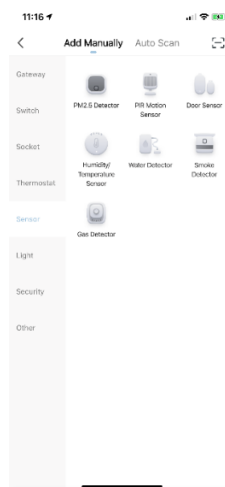
- Download and open Simon Smart APP



- Remove the battery insulation sheet to power up the device
- Insert the pin into the reset hole for more than 5s to enter the pairing mode



- Click add button "+" on the top right corner on the home page, select "sensor" and then select "Water Detector"
- Add the device as per the app prompts



### 9.4 Smart PIR Motion Sensor

Code	Description
S00E0-S010	Smart PIR Motion Sensor

#### Installation Environment:

- Easy to install with powerful 3M gum
- IP67 international waterproof grade

#### Preparation for Use:

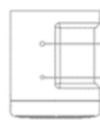
- Ensure that the smart gateway has been added.
- Mobile phone is connected to Internet (Wi-Fi or 3G/4G/5G)
- Ensure effective coverage of ZigBee network. (Communication distance between any ZigBee devices: <2 walls, <100m in open area)

#### Network Configuration:

- Download and open Simon Smart APP



- Insert the pin into the reset hole for more than 5s until the network configuration indicator flashes
- Click add button “+” on the top right corner on the home page, select “sensor” and then select “PIR Motion Detector”



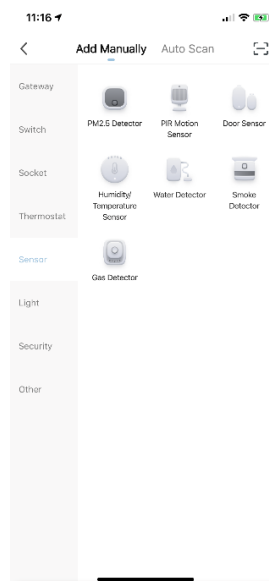
Reset hole

Network configuration indicator



Mounting base

- Add the device as per the app prompts

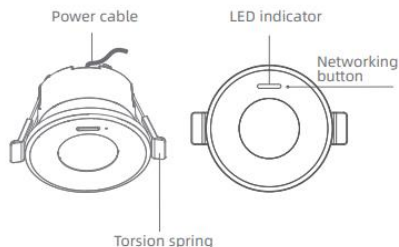


### 9.5 Smart human presence detector ceiling sensor (ZigBee)

Code	Description
S00E0-S029	Smart human presence detector ceiling sensor(ZigBee)

#### Installation Environment:

- Connect the N wire and L wire to the sensor power cable.
- \*Make sure the power is cut off before wiring connection.



#### Preparation for Use:

- Ensure that the smart gateway has been added.
- Mobile phone is connected to Internet (Wi-Fi or 3G/4G/5G)
- Ensure effective coverage of ZigBee network. (Communication distance between any ZigBee devices: <2 walls, <100m in open area)

#### Network Configuration:

- Download and open Simon Smart APP



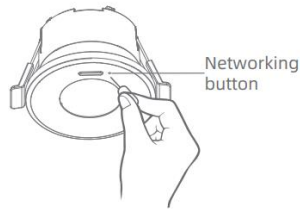
- The sensor will enter warm-up state within 20 seconds after power-on (1 time/second). During the warm-up period, the internal sensor neither communicates with the wireless module, nor detects external movement signals. After warm-up ends, open the APP and enter into gateway, then tap "+" to add "smart human presence sensor" according to the prompt.



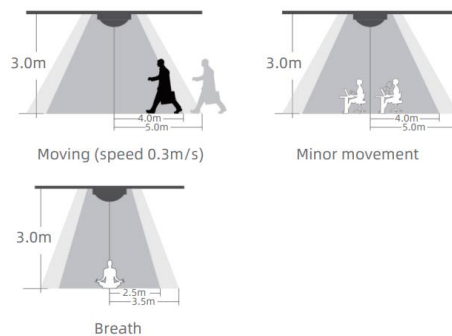
- According to APP prompt, press and hold the networking button for 5 seconds, the device come into networking state, green LED flash quickly (5 times per second). Networking success when green LED keeps on for 3 seconds and then goes off, and APP will prompt networking success. If networking failed, green LED flash slowly (2 times per second) for 3 seconds, then goes off, APP will prompt networking failed. If device can



not networking successfully in 60 seconds, networking will stopped and green LED goes off.



- Except in sleep state, the sensor is able to detect people walking, body moving, raising heads, turning around and etc



- In APP, linkage can be set between smart switch, smart light and smart human presence sensor. When someone is detected and environment illuminance is below the threshold value (which can be set in APP), the linked device will execute corresponding set actions.
- Explanation of setting

Sensitivity setting	Set product sensitivity, the higher the number, the more sensitive	
No one moves delay	When no person is detected, for example, after the set time of "5 minutes," the system reports the status of no one present	
Indicator switch	Indicator light switch, when this option is turned off, the light will not turn on when someone passes by	

Simon-Smart Installation Manual

Alarm set	APP message push when detects people move	<div><div>15:41</div><div><div></div><div></div><div></div><div>14</div></div></div> <div><div>&lt;</div><div>Settings</div></div> <div><div>Sensitivity setting</div><div>20% &gt;</div></div> <div><div>No one moves delay</div><div>20min &gt;</div></div> <div><div>Indicator switch</div><div><div></div></div></div> <div><div>Creat Smart</div><div>&gt;</div></div> <div><div>Alarm set</div></div> <div><div>someone moves</div><div><div></div></div></div> <div></div>
-----------	---	---

### 9.6 Smart Temperature and Humidity Sensor

Code	Description
S00E0-S011	Smart Temperature and Humidity Sensor

#### Installation Environment:

- Easy to install with powerful 3M gum

#### Preparation for Use:

- Ensure that the smart gateway has been added.
- Mobile phone is connected to Internet (Wi-Fi or 3G/4G/5G)
- Ensure effective coverage of ZigBee network. (Communication distance between any ZigBee devices: <2 walls, <100m in open area)

#### Network Configuration:

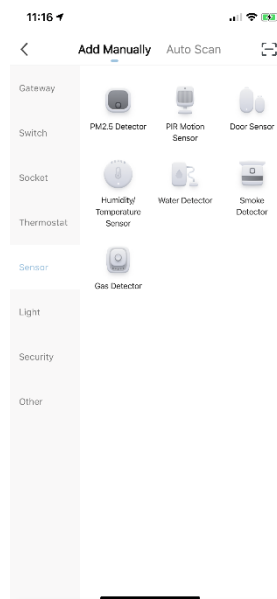
- Download and open Simon Smart APP



- Insert the pin into the reset hole for more than 5s until the network configuration indicator flashes



- Click add button “+” on the top right corner on the home page, select “sensor” and then select “Humidity/Temperature Sensor”
- Add the device as per the app prompts



## 9.7 Smart Door and Window Sensor

Code	Description
S00E0-S012	Smart Door and Window Sensor

### Installation Environment:

- Easy to install with powerful 3M gum

### Preparation for Use:

- Ensure that the smart gateway has been added.
- Mobile phone is connected to Internet (Wi-Fi or 3G/4G/5G)
- Ensure effective coverage of ZigBee network. (Communication distance between any ZigBee devices: <2 walls, <100m in open area)

### Network Configuration:

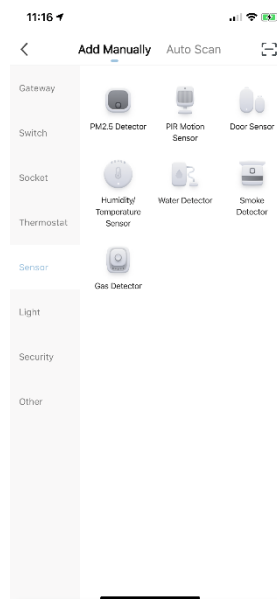
- Download and open Simon Smart APP



- Insert the pin into the reset hole for more than 5s until the network configuration indicator flashes



- Click add button "+" on the top right corner on the home page, select "sensor" and then select "Door Sensor"
- Add the device as per the app prompts



### 9.8 Smart Emergency Button

Code	Description
S00E0-S013	Smart Emergency Button

#### Preparation for Use:

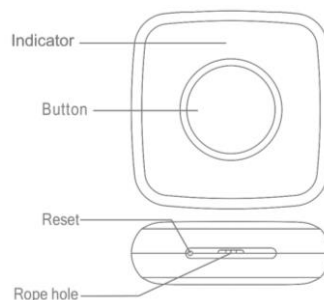
- Ensure that the smart gateway has been added.
- Mobile phone is connected to Internet (Wi-Fi or 3G/4G/5G)
- Ensure effective coverage of ZigBee network. (Communication distance between any ZigBee devices: <2 walls, <100m in open area)

#### Network Configuration:

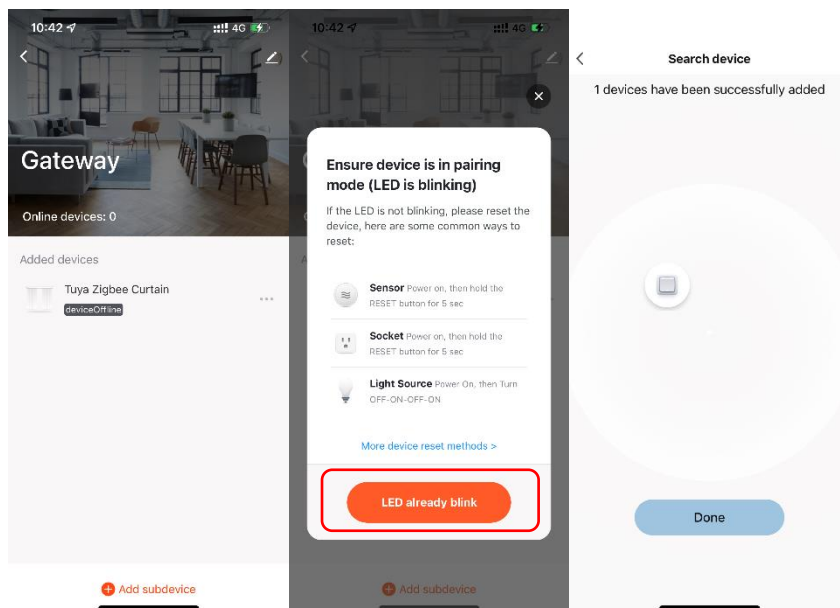
- Download and open Simon Smart APP



- Insert the pin into the reset hole for more than 5s until the indicator flashes



- Open Simon Smart APP, enter the "Gateway" interface and click "Add Subdevice"
- Confirm that indicator is blinking, then click "LED already blink"
- Add the device as per the app prompts

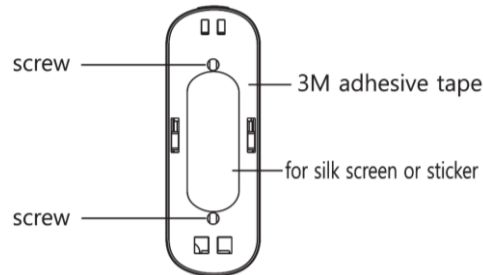


### 9.9 Smart Vibration Sensor

Code	Description
S00E0-S014	Smart Vibration Sensor

#### Installation Environment:

- Easy to install with powerful 3M adhesive tape
- Install and change battery: press the bottom cover and push it up in the opposite direction of the reset button to open the bottom cover



#### Preparation for Use:

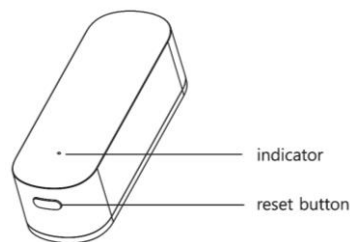
- Ensure that the smart gateway has been added.
- Mobile phone is connected to Internet (Wi-Fi or 3G/4G/5G)
- Ensure effective coverage of ZigBee network. (Communication distance between any ZigBee devices: <2 walls, <100m in open area)

#### Network Configuration:

- Download and open Simon Smart APP

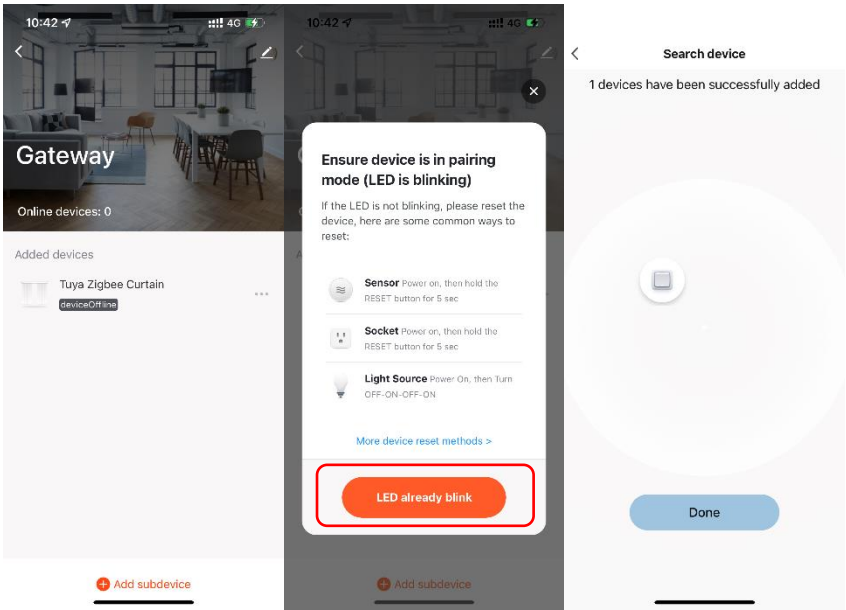


- Long press the reset button for more than 5s until the indicator flashes



- Open Simon Smart APP, enter the "Gateway" interface and click "Add Subdevice"
- Confirm that indicator is blinking, then click "LED already blink"
- Add the device as per the app prompts

# Simon-Smart Installation Manual



## 9.10 Smart Infrared Remote Controller

Code	Description
S00E0-S016	Smart Infrared Remote Controller

### Installation Environment:

- Need USB power supply and good Wi-Fi coverage

### Preparation for Use:

- Mobile phone is connected to 2.4GHz Wi-Fi
- Ensure that the smart gateway and mobile phone are under the same Wi-Fi network

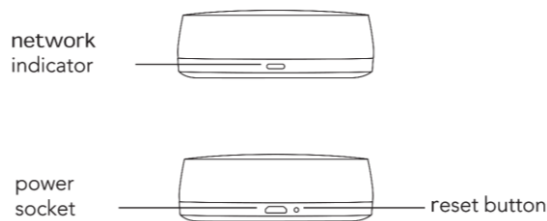


### Network Configuration:

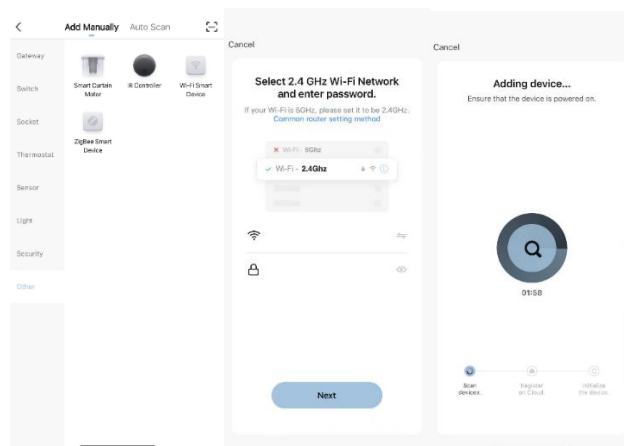
- Download and open Simon Smart APP



- Long press the reset button for more than 5s until the network indicator flashes



- Open Simon Smart APP, click add button “+” on the top right corner on the home page, select “Other” menu and then select “Wi-Fi Smart Device”
- Add the device as per the app prompts





### 9.11 Smart RF Infrared Remote Controller

Code	Description
S00E0-S017	Smart RF Infrared Remote Controller

#### Installation Environment:

- Need USB power supply and good Wi-Fi coverage

#### Preparation for Use:

- Mobile phone is connected to 2.4GHz Wi-Fi
- Ensure that the smart gateway and mobile phone are under the same Wi-Fi network

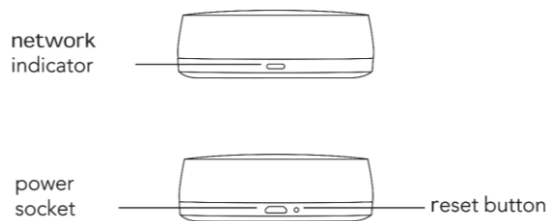


#### Network Configuration:

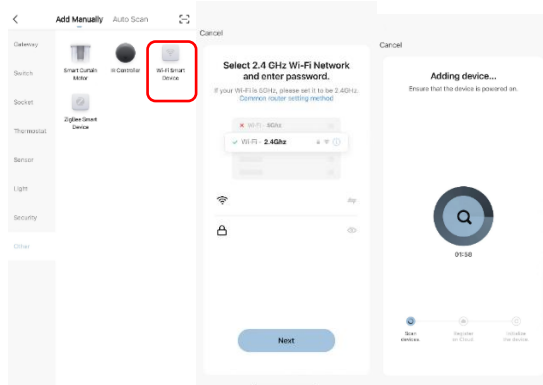
- Download and open Simon Smart APP



- Long press the reset button for more than 5s until the network indicator flashes



- Open Simon Smart APP, click add button “+” on the top right corner on the home page, select “Other” menu and then select “Wi-Fi Smart Device”
- Add the device as per the app prompts

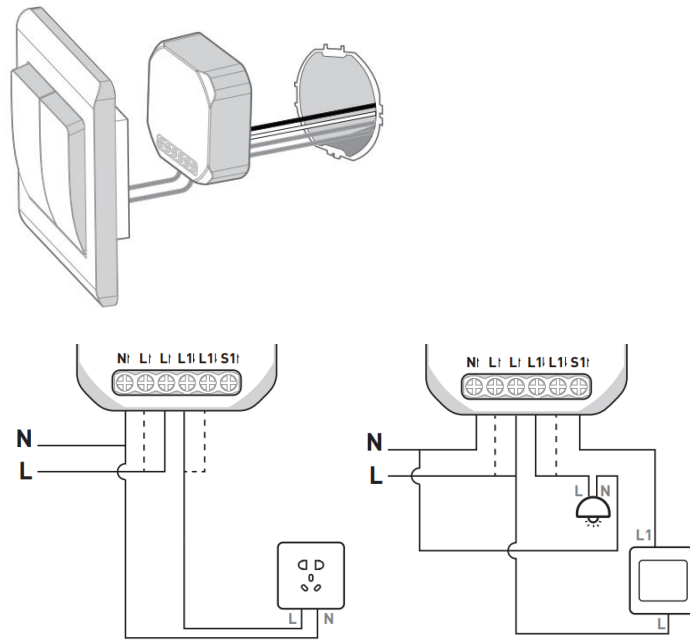


### 9.12 Smart breaker

Code	Description
S00E0-S020	Smart Breaker(Wi-Fi)
S00E0-S021	Smart Breaker(ZigBee)

#### Installation Environment:

- Need power supply and good Wi-Fi coverage
- Hidden in a box, install in original wall box(switches/sockets)



#### Preparation for Use(ZigBee version):

- Ensure that the smart gateway has been added.
- Mobile phone is connected to Internet (Wi-Fi or 3G/4G/5G)
- Ensure effective coverage of ZigBee network. (Communication distance between any ZigBee devices: <2 walls, <100m in open area)

#### Preparation for Use (WiFi version):

- Ensure the product is within the effective coverage of Wi-Fi network
- Ensure the Bluetooth function of your mobile phone is opened
- Mobile phone is connected to 2.4GHz Wi-Fi

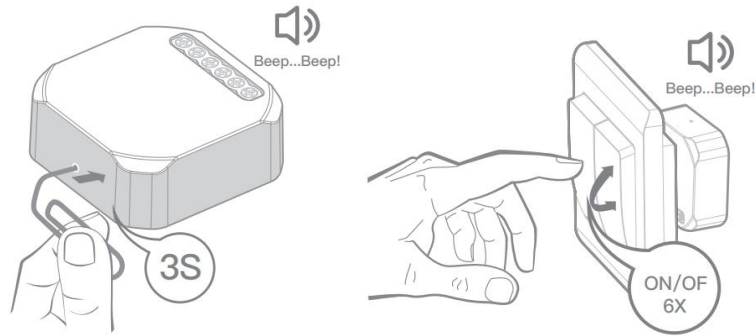
#### Network Configuration:

- Download and open Simon Smart APP

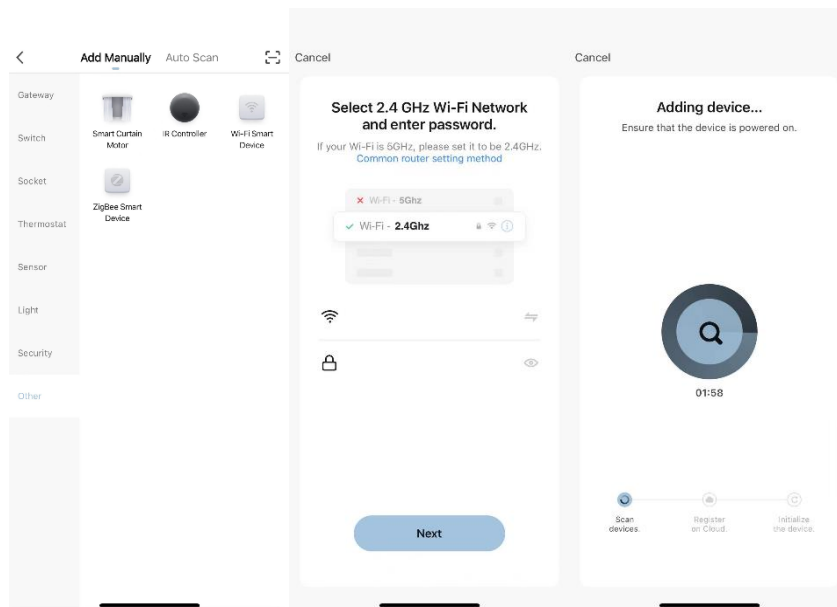


- Power on the breaker, Long press the reset button for more than 3s until or continuously switch ON/OFF for 6 times until heard the prompt (Beep Beep)

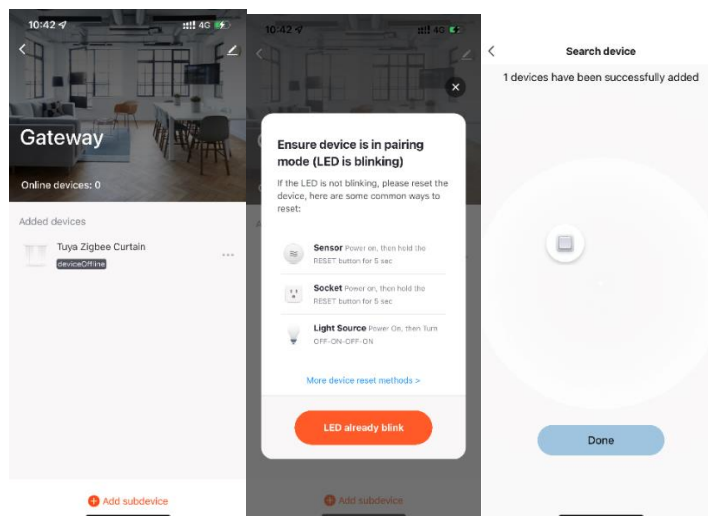
## Simon-Smart Installation Manual



- Open Simon Smart APP, for WiFi version, click add button “+” on the top right corner on the home page, select “Other” menu and then select “Wi-Fi Smart Device”



- For ZigBee version, enter the “Gateway” interface and click “Add Subdevice”
- Add the device as per the app prompts

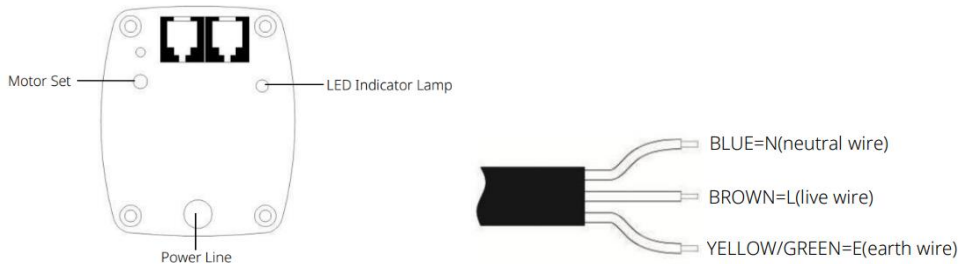


## 10 Smart Curtain motor

Code	Description
S00E0-S025	Smart curtain motor(ZigBee)
S00E0-S023	Smart curtain motor(Wi-Fi)

### Installation Environment:

- Plug the smart curtain motor into the curtain track
- Can work with standardized 82 type curtain track like Somfy, Slient Gliss or other brands with 82 gear box



### Preparation for Use:

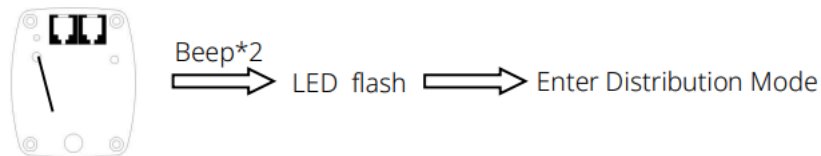
- ZigBee curtain motor version
  - Ensure that the smart gateway has been added.
  - Mobile phone is connected to Internet (Wi-Fi or 3G/4G/5G)
  - Ensure effective coverage of ZigBee network.(Communication distance between any ZigBee devices: <2 walls, <100m in open area)
- Wi-Fi curtain motor version
  - Mobile phone is connected to 2.4GHz Wi-Fi

### Network Configuration:

- Download and open Simon Smart APP



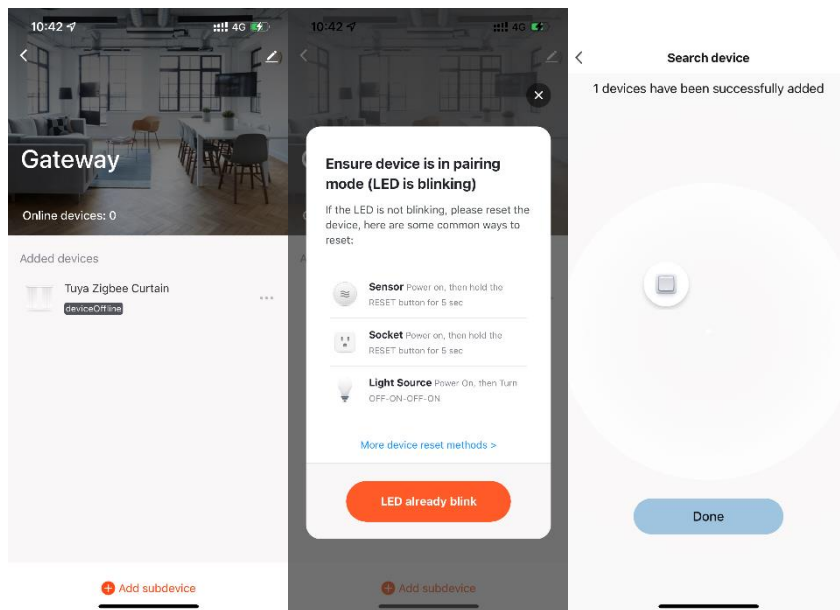
- Long press the reset button for more than 3s until the indicator light flashes quickly



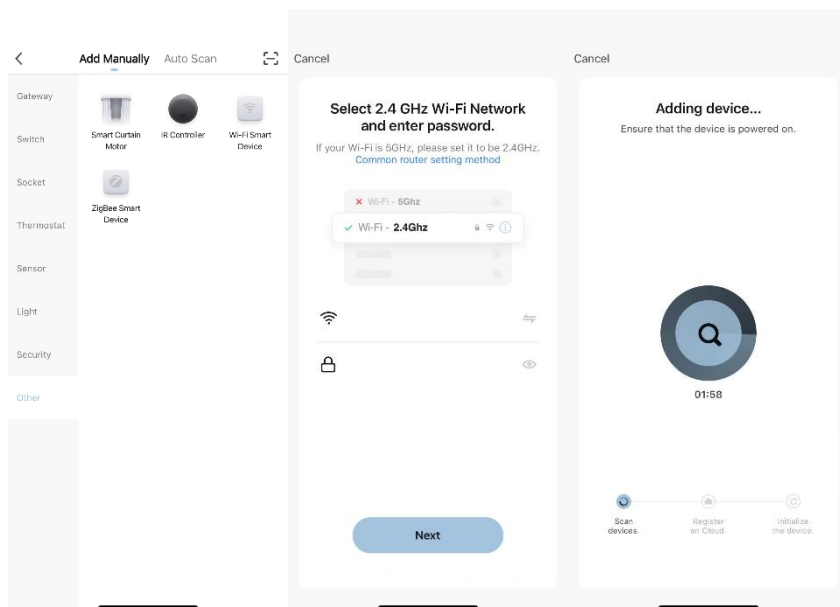
- **ZigBee curtain motor version**
- Open Simon Smart APP, enter the "Gateway" interface and click "Add Subdevice"

## Simon-Smart Installation Manual

- Add the device as per the app prompts



- **WiFi curtain motor version**
- Open Simon Smart APP, click add button "+" on the top right corner on the home page, Confirm that indicator flashes quickly, select "Others" menu and then select "Smart curtain motor"
- Add the device as per the app prompts

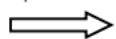


### Restore factory Settings



Long press "SET" 6s

Beep lasts 1s



Restore factory Setting succeed

# 11 Smart Lock

Code	Description
S00E0-LK30	LK30 Simon smart lock
S00E0-LK33	LK33 Simon smart lock
S00E0-LK20	LK20 Simon smart lock

## Installation Environment:

- It is recommended to look for professionals to install and follow the instructions carefully before installation

## Preparation for Use:

- Mobile phone is connected to 2.4GHz Wi-Fi
- Ensure that the smart gateway and mobile phone are under the same Wi-Fi network



## Add the Administrator:

- The first three users will be defined as administrators
- Long press "\*", the voice prompt: please enter 6~8 digits admin password followed by "#"
- Add administrator's password (6~8 numbers) ended with "#" (the same password, 2 times), then the voice prompt: add successfully
- Then you can continue add fingerprint (3 times) , card, password(6~8 numbers) ended with "#" (the same password, 2 times)

## Add the User:

- Long press "\*", the voice prompt: please verify the administrator
- Verify the administrator
- Add user's fingerprint (3 times), card, or password (6~8 numbers) ended with "#" (the same password, 2 times)
- The voice prompts: add successfully, then you can continue to add

## Delete the User:

- Long press "\*", the voice prompt: please verify the administrator
- Verify the administrator
- Long press "\*" again
- Press "1" to remove all user fingerprints, press "2" to remove all user passwords, press "3" to remove all user cards, press "4" to remove all users
- The voice prompts: successful

## NOTE:

The administrator can't be removed by doing this or by APP

### Modify Password:

- Press "7""#", you can hear a long beep from the lock
- Enter the old password which needs to be modified, the voice will prompt: please add user
- Enter new password ended by "#"(the same password, 2 times), the voice will prompt: successful

#### NOTE:

The old password that was modified will be invalid after modification

### Reset the Lock:

- Remove the battery cover, long-press "set" for 3 seconds, verify the administrator
- The system restore itself to the factory default settings

#### NOTE:

After the reset, all user and administrator information will be removed

The password will return to its default "1234567890"

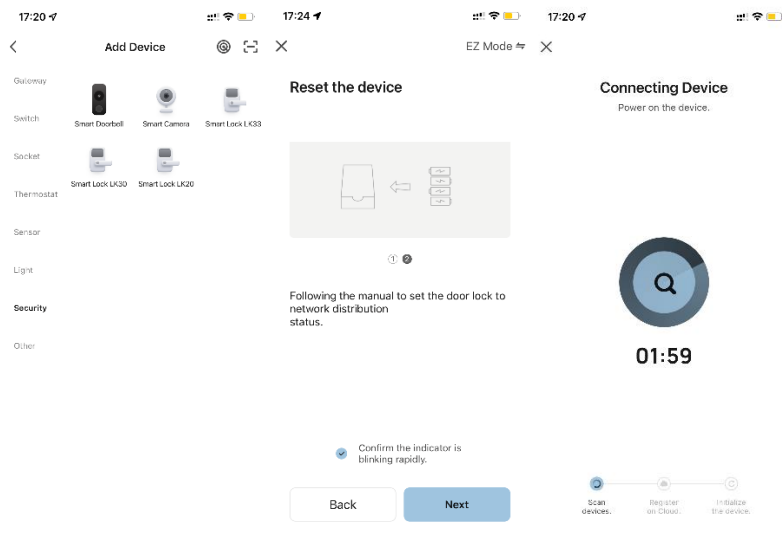
Please add new administrator immediately

### Network Configuration:

- Download and open Simon Smart APP



- Short press "3""#" of the lock, verify the administrator and then the LED of "8" fast flash



## 12 Smart Camera

Code	Description
S00EO-S006	Smart camera 30
S00EO-S007	Smart camera 20

### Installation Environment:

- Need power supply and good Wi-Fi coverage

### Preparation for Use:

- Mobile phone is connected to 2.4GHz Wi-Fi
- Ensure that the smart gateway and mobile phone are under the same Wi-Fi network

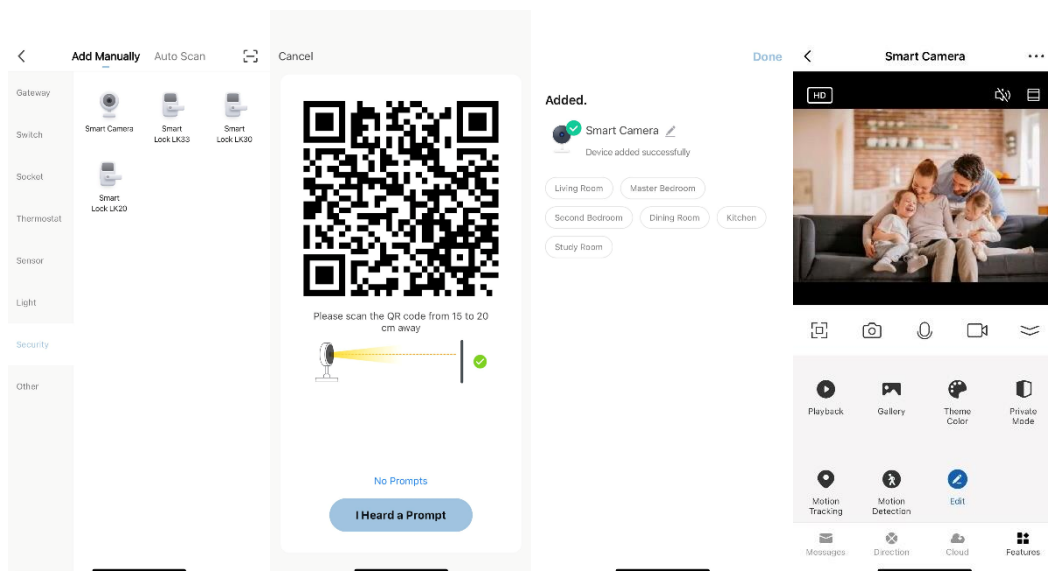


### Network Configuration:

- Download and open Simon Smart APP



- Open Simon Smart APP, click add button “+” on the top right corner on the home page, select “Security” menu and then select “Smart Camera”
- A QR code will prompt on your screen and you need to scan it with the smart camera. (the camera is about 20~30cm away from the mobile phone lens)
- Click “I Heard a Prompt” and add the device as per the app prompts





## 13 Smart doorbell

Code	Description
S00E0-S024	Smart doorbell(Wi-Fi)

### Installation Environment:

- Need power supply and good Wi-Fi coverage

### Preparation for Use:

- Mobile phone is connected to 2.4GHz Wi-Fi
- Ensure that the smart gateway and mobile phone are under the same Wi-Fi network

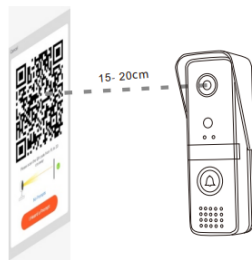


### Network Configuration:

- Download and open Simon Smart APP

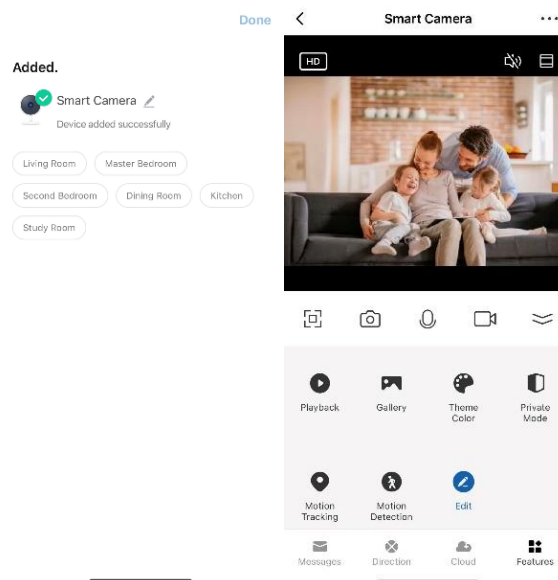
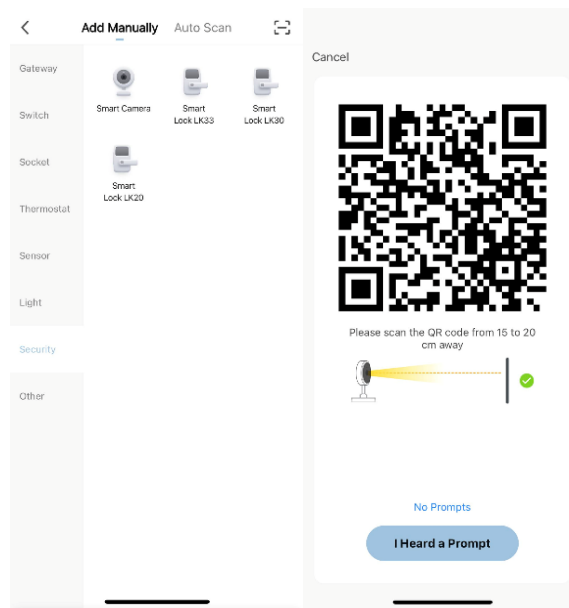


- Open Simon Smart APP, click add button "+" on the top right corner on the home page, select "Security" menu and then select "Smart camera/doorbell"
- A QR code will prompt on your screen and you need to scan it with the smart doorbell. (the doorbell is about 20~30cm away from the mobile phone lens)



- Click "I Heard a Prompt" and add the device as per the app prompts

# Simon-Smart Installation Manual



# 14 Smart alarm security set

Code	Description
S00E0-S039	Smart alarm security set (Wi-Fi)

## Installation Environment:

- Need power supply to the main unit and good Wi-Fi coverage

## Preparation for Use:

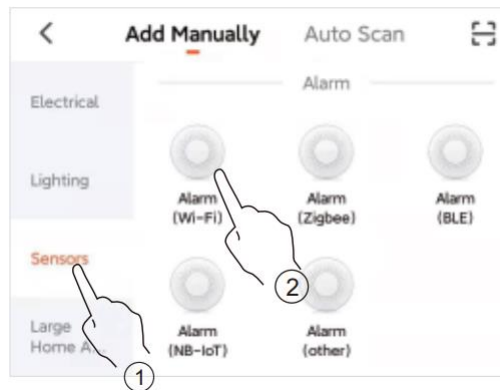
- Mobile phone is connected to 2.4GHz Wi-Fi
- Please connect your mobile phone and the Wi-Fi main unit to the same WiFi network, and then launch the "Simon Smart" APP

## Network Configuration:

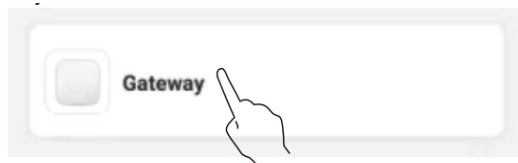
- Download and open Simon Smart APP



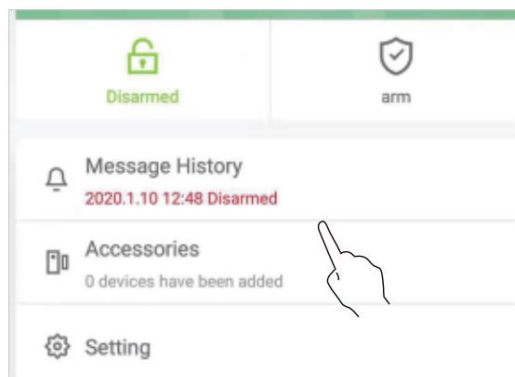
- Open Simon Smart APP, click add button "+" on the top right corner on the home page, select "Security" menu and then select "Smart Camera"
- Place the Wi-Fi main unit next to the router (2.4GHz WiFi) and ensure it has connected to power source. Long press the "🎵" button for above 5 seconds, the indicator light will flash green rapidly or slowly, the device is in the WiFi configuration state.
- Two Methods of Adding the Device. (Auto scan)  
 Enable the bluetooth function of your mobile phone.  
 The device is in WiFi Configuration state.  
 On the APP's home page, tap "+" at the upper right corner and then tap "Auto Scan".
- Two Methods of Adding the Device. (Add manually)  
 The device is in Wi-Fi Configuration state.  
 On the APP's home page, tap "+" at the upper right corner and then tap "Add Manually".  
 Product type: Sensors > Alarm (Wi-Fi).



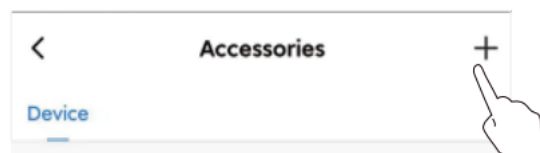
- Enter the WiFi account and password. Select the network configuration method (EZ mode or AP mode) according to the indicator light.
- Adding the Sensors to the Wi-Fi Main Unit  
In the device list, tap the Wi-Fi Main Unit you just added



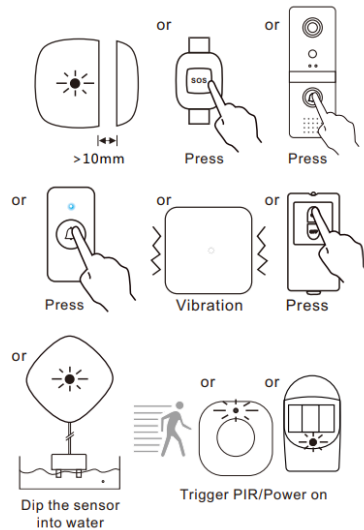
- Tap "Accessories".



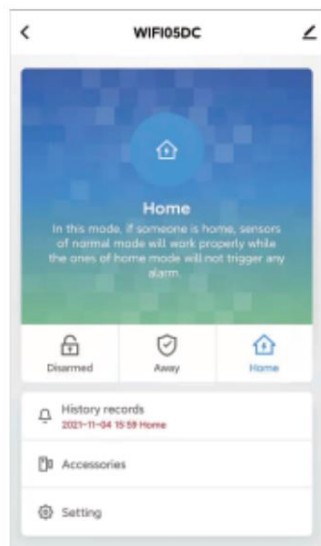
- Tap "+"



- Within 90 seconds, trigger the sensor and its indicator light will turn on. On the other hand, if the Wi-Fi main unit receives the signal from the sensor, it will sound two "Di" tones to indicate that adding the sensor is successful. Only one sensor can be added once. 15 sensors in total can be added to the Wi-Fi main unit



### ■ Wi-Fi Main Unit's APP interface



Modes: Disarm, Arm and Home

Accessories: View the paired sensors, edit their settings including name, type, security zone attribute, etc.

Up to 15 sensors can be added to the Wi-Fi main unit.

## 15 Smart Lighting

### 15.1 Smart Downlight

Code	Description
N03E0-1142	Smart LED downlight Dim & Tunable 8W WIFI
N03E0-1143	Smart LED downlight Dim & Tunable 17W WIFI
N03E0-1144	Smart LED downlight Dim & Tunable 24W WIFI

**Preparation for Use:**

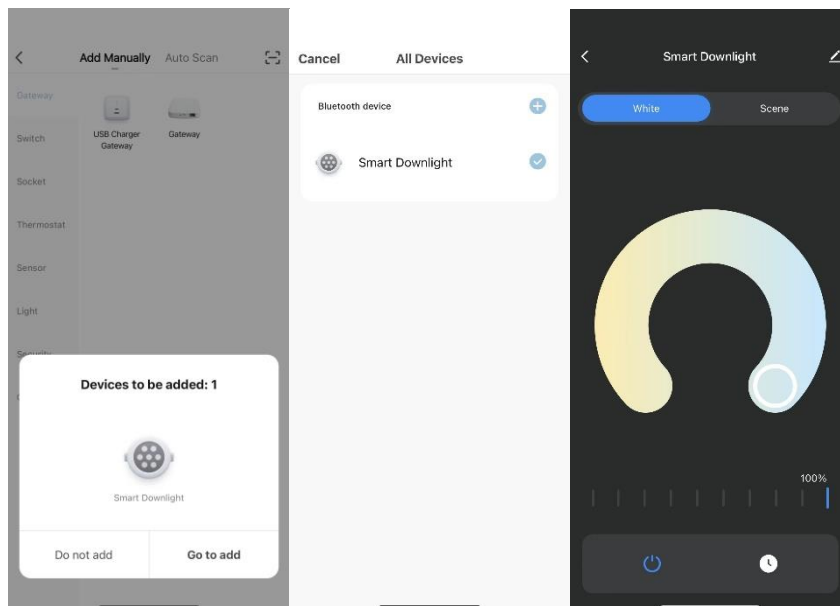
- Ensure the product is within the effective coverage of Wi-Fi network
- Ensure the Bluetooth function of your mobile phone is opened
- Mobile phone is connected to 2.4GHz Wi-Fi

**Network Configuration:**

- Download and open Simon Smart APP



- Power on the downlight and continuously switch ON/OFF for 5 times until the downlight flashes
- Click add button "+" on the top right corner on the home page, a pop-up window will remind you to add a device
- Add the device as per the app prompts



## Simon-Smart Installation Manual

### 15.2 Smart Bulb

Code	Description
N62E0-1153	Smart RGB + Tunable CCT bulb A60 8.5W WIIFI

#### Preparation for Use:

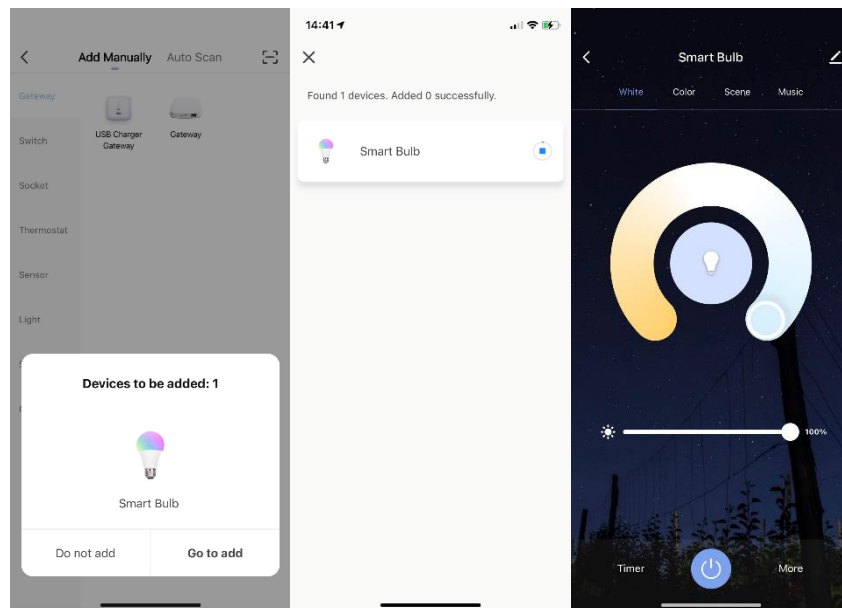
- Ensure the product is within the effective coverage of Wi-Fi network
- Ensure the Bluetooth function of your mobile phone is opened
- Mobile phone is connected to 2.4GHz Wi-Fi

#### Network Configuration:

- Download and open Simon Smart APP



- Power on the bulb and continuously switch ON/OFF for 3 times until the bulb flashes
- Click add button "+" on the top right corner on the home page, a pop-up window will remind you to add a device
- Add the device as per the app prompts



### 15.3 Smart KC1

Code	Description
N62E0-1157	Smart LED KC1 Tunable CCT Module Max12W15°2700-6000K
N62E0-1158	Smart LED KC1 Tunable CCT Module Max12W24°2700-6000K
N62E0-1159	Smart LED KC1 Tunable CCT Module Max12W36°2700-6000K
N62E0-1160	Smart LED KC1 Tunable CCT Module Max12W60°2700-6000K

## Simon-Smart Installation Manual

N6524-0391	SC1 constant current dim+tunable CCT driver (5W100mA36VDC)
N6524-0392	SC1 constant current dim+tunable CCT driver (7W160mA36VDC)
N6524-0393	SC1 constant current dim+tunable CCT driver (9W200mA36VDC)
N6524-0394	SC1 constant current dim+tunable CCT driver (12W300mA36VDC)
N6524-0412	Dim+tunable CCT zigbee module

### 15.4 Smart GU10

Code	Description
N62E0-1170	Smart LED GU10 Tunable CCT 5W 2700-6500K WIFI
N62E0-1171	Smart LED GU10 RGB+CCT 5W WIFI

### 15.5 Smart Strip

Code	Description
N68E0-0060	Smart LED Strip RGB+CCT 9W 3000-6000K EU 2M WIFI
N68E0-0061	Smart LED Strip RGB+CCT 15W 3000-6000K EU 5M WIFI
N68E0-0062	Smart LED Strip RGB+CCT 9W 3000-6000K BS 2M WIFI
N68E0-0063	Smart LED Strip RGB+CCT 15W 3000-6000K BS 5M WIFI

#### Preparation for Use:

- Ensure the product is within the effective coverage of Wi-Fi network
- Ensure the Bluetooth function of your mobile phone is opened
- Mobile phone is connected to 2.4GHz Wi-Fi

#### Network Configuration:

- Download and open Simon Smart APP



- Power on the strip and continuously switch ON/OFF for 3 times (or long press the switch button for more than 5 seconds) until the strip flashes
- Click add button "+" on the top right corner on the home page, a pop-up window will remind you to add a device
- Add the device as per the app prompts