



Website



Facebook



YouTube

simon
LIGHT UP EMOTIONS

www.simonelectric.com



Simon, S.A.(Spain)
Tel. +34 902 109100
Web. www.simonelectric.com

Simon Electric (China)
Tel. +86 21 3855 5222
Web. www.simon.com.cn

Simon Electric (APAC)
Web. www.simon-apac.com
E-mail. info@simon-apac.com

PT Simon Elektrik Indonesia
Tel. +62 21 52960373
Web. www.simonelektrik.co.id

Dec 2024 Printed

Simon RCU system catalogue

simon



Simon | RCU System

Hotel Solution

simon



simon
LIGHT UP EMOTIONS

Feeling, is what converts time into moments, into snap shot of time to remember.
Emotions convert space into a home, yours.

At Simon, we know that the spaces are the center of all these experience and be able to fill them with nuances and different intensity of sensual.
So you not only living them, but you resonating with them.
Touch, see, hear, feel.
We want to offer you a whole range of sensations.

Simon, light up emotions.

Simon|RCU_{System}

Simon-Bus control system conducts centralized control management of the main indoor electrical equipment (air conditioner, keycard switch, lighting and curtain etc.). Through real-time communication between local area networks and the computer, the operating state of the equipment can be sent to the management computer in time, which is convenient for the scientific management and maintenance by the administrators or service staff. Individual users can improve on the comfort level of the living or working space through the remote control of intelligent terminals.

CONTENTS

05	Simon Hotel Solution
07	Simon Advantages
13	Management software
17	Simon-Bus System Structure
19	Simon-Bus Module
29	S4 Bus Multi-control Panel
31	S20 ELV
37	M7 ELV
43	V8 ELV
49	I7 ELV
57	E6 ELV
63	Wireless RCU
73	Projects cases

Simon Hotel Solution



Individual user

Guest can control lighting, curtain,A/C and scene on the screen.



Manager users

Manager users can visit operating state of equipment in the architecture by software and conduct scientific controlling.

Simon-RCU system

- Air conditioning system
- ⚙ Lighting system
- 🪟 Curtain control
- 🔌 State control
- 🔧 Service center
- 🔧 Maintenance management
- 📱 Intelligent controlling

Lighting product

- Hotel spotlight
- Downlight
- Striplight
- Track spotlight
- Dimming spotlight
- Floor lamp
- Foot light
- Wall lamp

Switch panel

- ELV Switch
- Thermostat
- Doorbell switch
- Intelligent energy door magnet/window magnet
- Shaver socket
- Volume control switch
- Emergency button
- Sensor monitoring

Simon Advantages



Comfortable

Lighting scene is combined with curtains, creating a warm guestroom atmosphere;
Air-conditioning system, central ventilation system, and aromatic system are applied to present a fresh and comfortable environment;
Switch panel is integrated with hotel design style, improving hotel grade.

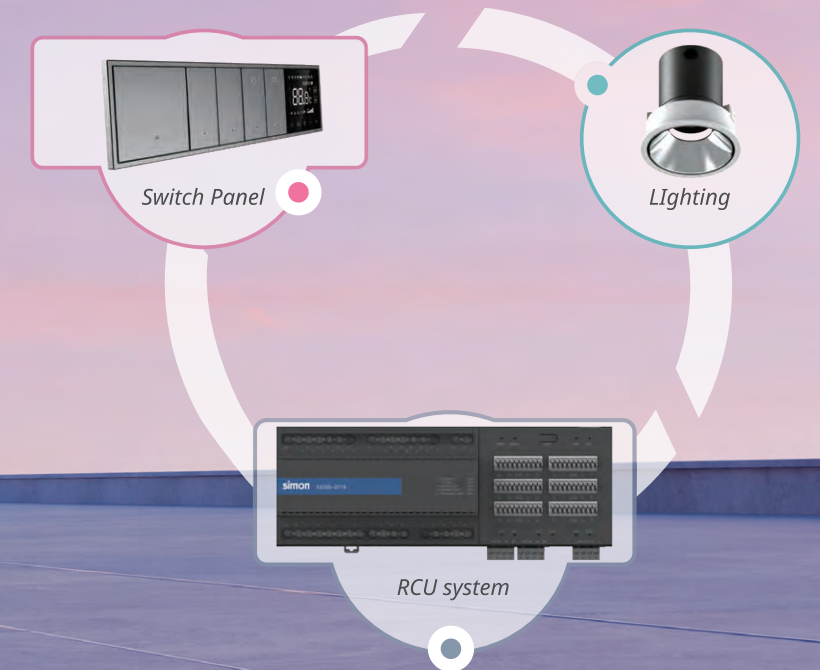
Energy Saving

Reduce energy expenditure and operating cost through the intelligent control of air-conditioning, curtains, and exhaust fans;
Effectively control lighting and avoid waste through plug-in electricity, infrared sensors, door contact, etc

Efficient

Guest service request (SOS, washing clothes, clearing rooms, check-out, etc.) can be delivered to the customer service center promptly by Simon-Bus control system;
Offers efficient services.

Simon Advantages



1 One-stop shopping

Based on a reliable and compatible Simon-Bus control system as well as professional and comprehensive switch panel products, it fully supports one-stop shopping for all hardware, software and auxiliary materials required by the project. Efficiently solves the customers' requirements, shortens period, reduces cost and improves efficiency.

2 Flexible product range Multiple solutions

Combining hotel space structure and control appliance volume, it provides Simon-Bus series of products with different configurations.



3 Personalized customization

It provides optional customized services according to the customers' special requirements for product functions or requirements for personalized control modes



4 Stable and mature product technology

Through three generations of improved design, Simon-Bus products continuously improve the details with mature technology and stable performance.

- Brand-new 3rd generation Simon-Bus series module products
- Integrated module construction, more convenient maintenance
- One-key synchronization, no need to re-program for updating
- CAN bus architecture with more reliable performance

Simon Advantages



Simon Poject case
Alila Wuzhen

5 Intimate and perfect service

The professional technical team provides full service from mechatronic design, installation guide, debugging guidance and after-sales service, paying close attention to customer requirements and helping customers finish projects before final delivery.

6 Sincere cooperation

Simon has cooperated with multi-national high-end hotel management companies, hotel proprietors, property developers and designing institutes for a long time, its products are widely used in numerous hotels, houses and office projects.

Management Software

Room Browsing

- Room Information: View all room information of the hotel
- Service Information: View service information of the hotel
- Hotel Browsing: Statistics of hotel room information

Room Control

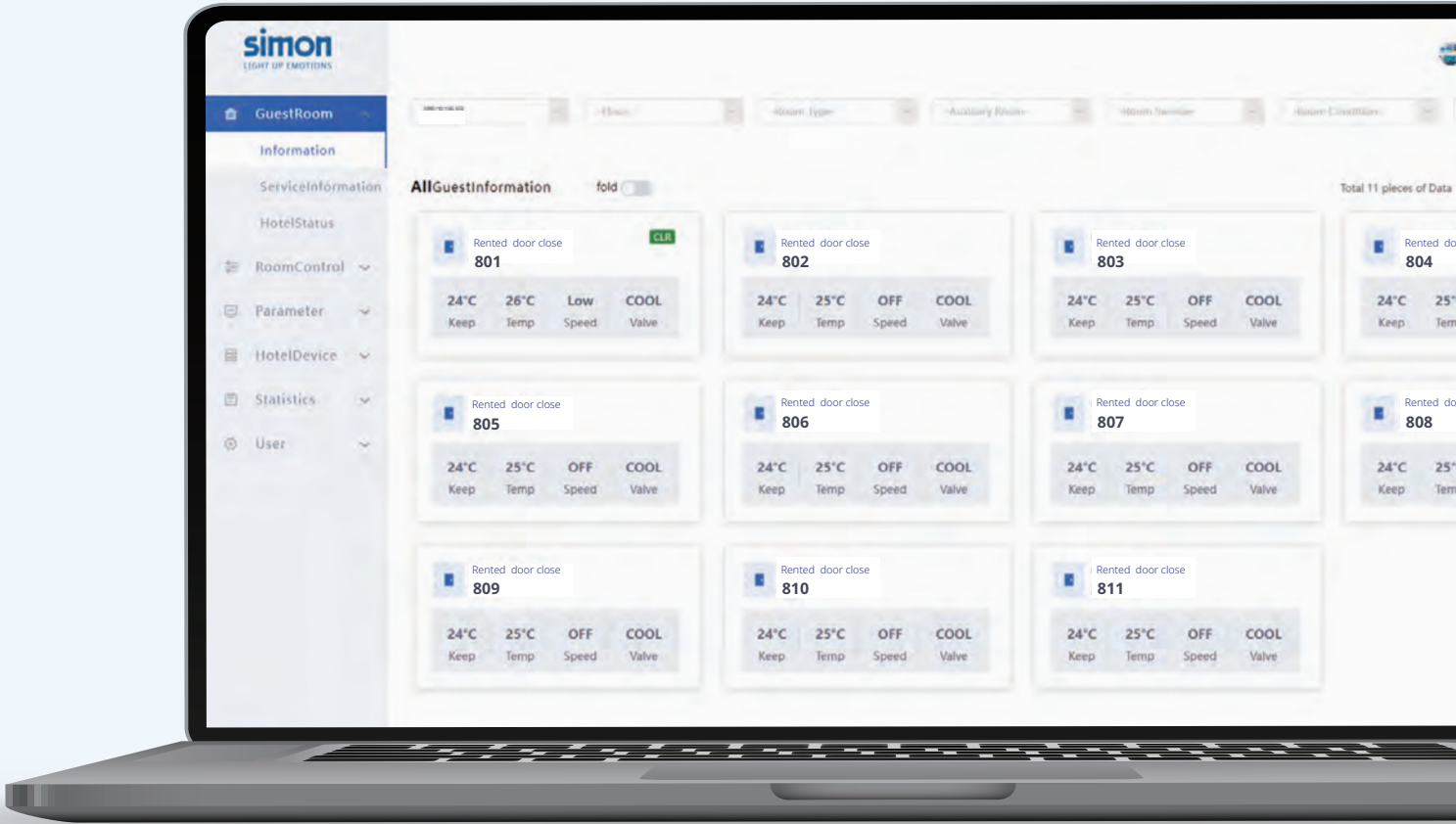
- A/C Control: Real-time monitoring and remote control of the room A/C system
- Room Status Control: Real-time viewing and control of room status
- Lighting Control: Real-time monitoring and remote control of the room lighting system

Parameter Settings

- Room Type Settings: Configure hotel room type parameters
- Floor Settings: Configure hotel floor parameters

Record Inquiry

- Service Records: View room service information records
- A/C Records: View room A/C operation records
- Card Insertion Records: View room card insertion and removal operation records



Management Software



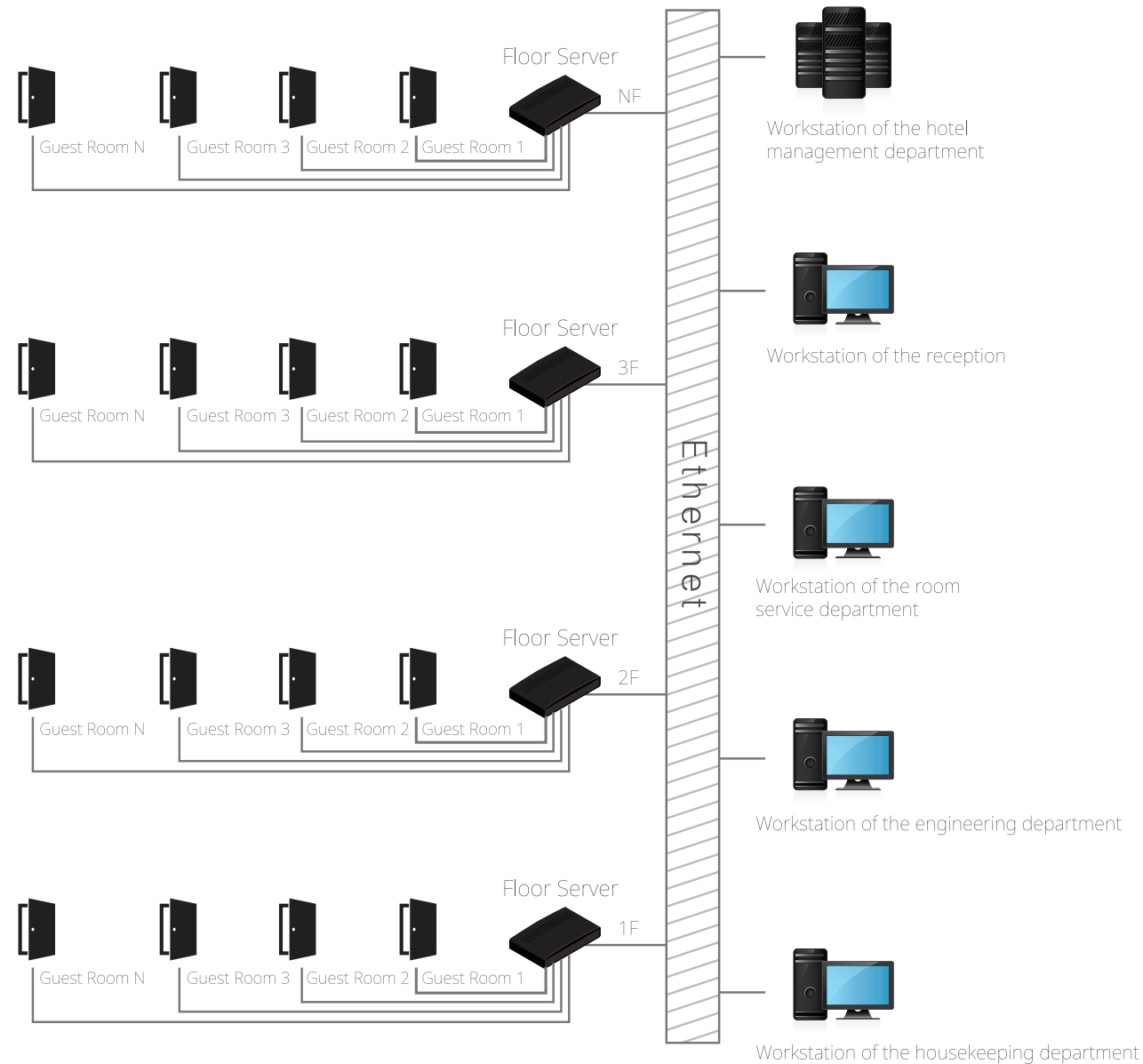
Energy consumption management

Monitor hotel room energy consumption data (air conditioning, outlets, lighting) through the hotel management system.
Analyze monthly usage and room type performance to support effective energy-saving management.

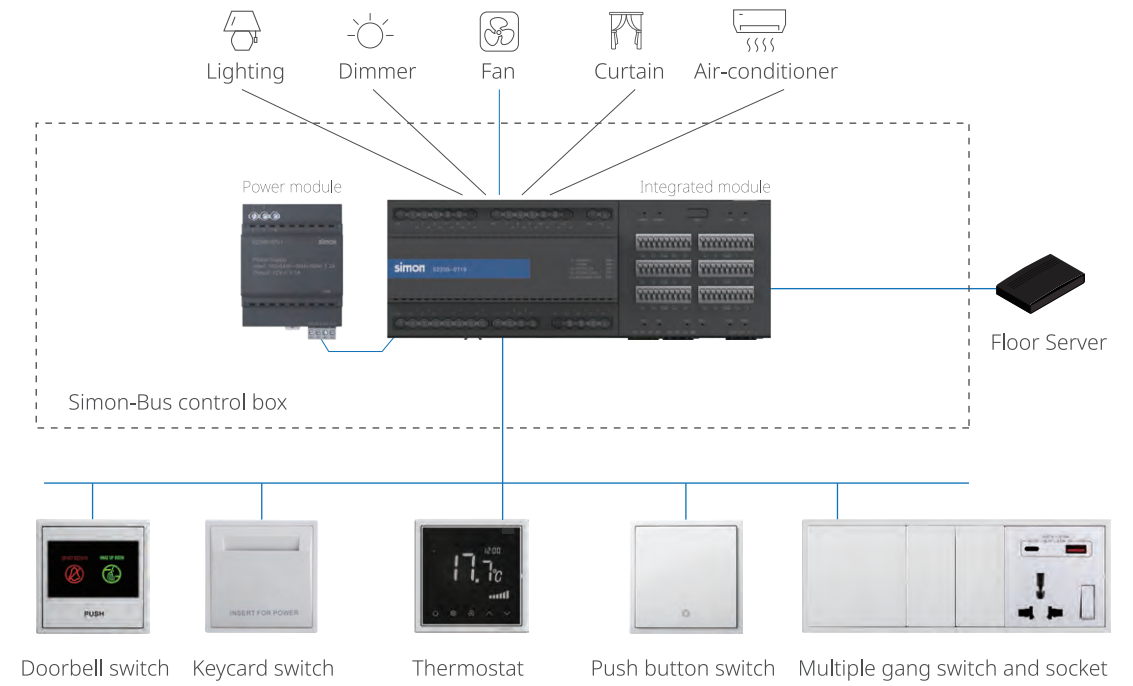
Simon-Bus system structure

Network topology and systematic framework

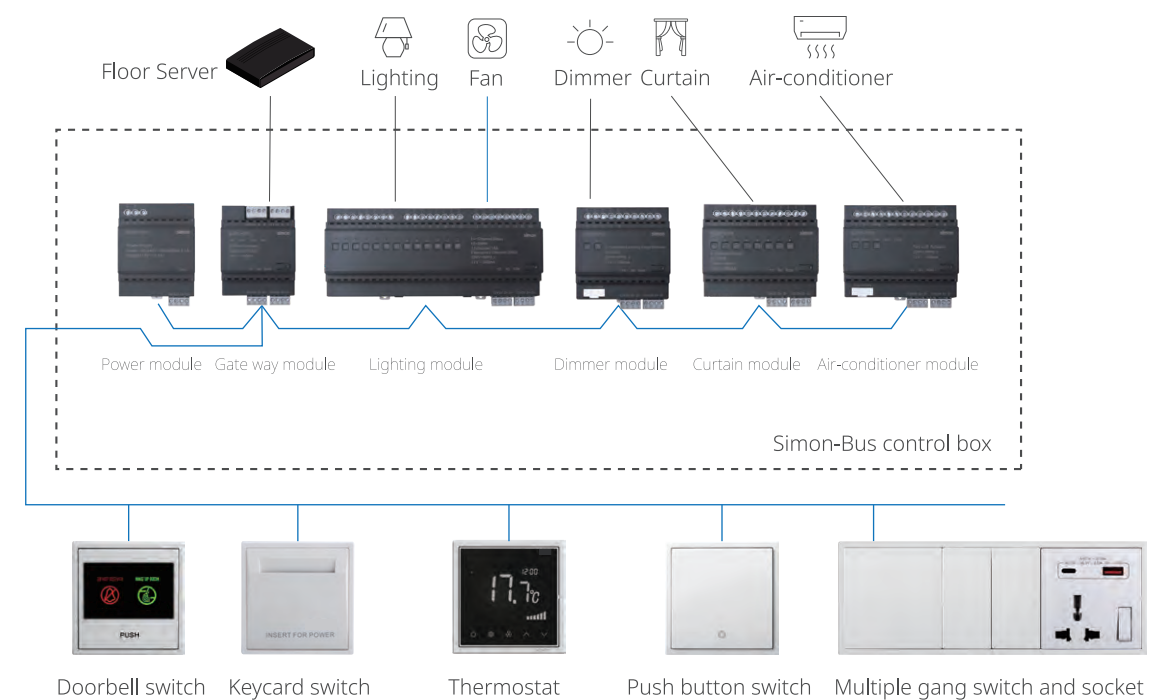
Simon adopts mature and reliable TCP/IP communication protocol with a high traffic rate as well as full duplex communication mode to ensure rapid, stable and efficient information transfer.




Integrated host machine layout




Simon-Bus system logic diagram



Power Supply Module


	Product name	Power Supply module12VDC(G4)
	Product code	S2200-0701
	Basic parameter	1. Operating voltage:100-240V ~ 50Hz/60Hz 2. Power output:12V/3.1A 3. Environmental temperature:-10.0°C ~ 40.0°C 4. Altitude:≤2000m
	Main function	Provide 12V/3.1A power supply
	Dimension	72*66*90mm(L*W*H)

All-in-one integrated RCU Module


	Product name	Integrated RCU module(G4)
	Product code	S2200-0719
	Main function	1. 230V output: 12 way*2A lighting 2 way*2A triac dimming 1 way*16A high-power 5 way*2A FCU 4 way*1A curtain 2. 12V input/output: 24 way inputs for dry contact signal 24 way outputs for LED indicator 3. 1- way Ethernet 2- way RS485 1- way SimCAN
	Dimension	252*66*90mm(L*W*H)

* Need use with Power supply module(S2200-0701)

A/C Gateway

	Product name	Docking AC mini gateway(VRF)
	Product code	S00E0-S041
	Basic parameter	1. Power supply mode: from AC indoor unit 2. Average power consumption: 0.5W 3. Ambient temperature: -20°C-65°C 4. Output power: DC7-15V,0.7W(MAX)
	Main function	1. Compatible with Simon (Modbus) thermostat and Simon-BUS system 2. Docking to mainstream VRF brands(Daikin,Panasonic...)

A/C Module

	Product name	2/4-Tube FCU & Ventilation Module(G4)
	Product code	S2200-0706
	Basic parameter	1. Nominal voltage:12V DC±5% 2. Rated current: 100mA 3. Environmental temperature:-10.0°C ~ 40.0°C 4. Altitude: ≤2000m
	Main function	1. 3 way*8A relay + 2 way*10A relay 2. FCU function: ON/OFF, Fan Speed(H/M/L), Cooling/Heating/Ventilation mode 3. CAN (Simon Bus)
	Dimension	108*66*90mm(L*W*H)

Relay Module

	Product name	8-Channel relay module(G4)
	Product code	S2200-0713
	Basic parameter	1. Nominal voltage: 12VDC±5% 2. Rated current:200mA 3. Environmental temperature:-10.0°C ~ 45.0°C 4. Altitude: ≤2000m
	Main function	1. 8 way*3A for 660W lighting, <20 lights 2. CAN (Simon Bus)
	Dimension	108*66*90mm(L*W*H)
	Product name	14-Channel relay module (G4)
	Product code	S2200-0704
	Basic parameter	1. Nominal voltage:12V DC±5% 2. Rated current:300mA 3. Environmental temperature:-10.0°C ~ 40.0°C 4. Altitude: ≤2000m
	Main function	1. 12 way*200W lighting 2. 1 way*16A 3. 1 way*200W emergency light(1 way<6 lights) 4. CAN (Simon Bus)
	Dimension	216*66*90mm(L*W*H)

Curtain&Water heating Module

	Product name	8-Channel Curtain&Water heating Module(G4)
	Product code	S2200-0705
	Basic parameter	1. Nominal voltage:12V DC±5% 2. Rated current: 200mA 3. Environmental temperature:-10.0°C ~ 40.0°C 4. Altitude: ≤2000m
	Main function	1. 8 way*3A(Curtain/Water Heating) 4 way for curtain(Strong current) 4 way for Water Heating(electric valve) 2. 8 way for Water Heating(solenoid valve) 3. CAN (Simon Bus)
	Dimension	108*66*90mm

Dimming Module

	<div><div>Product name</div><div>Product code</div><div>Basic parameter</div></div> <div>2-Channel TRIAC Dimming Module(G4) S2200-0707</div> <div><div>1. Nominal voltage:12V DC±5%</div><div>2. Rated current: 200mA</div><div>3. Environmental temperature:-10.0°C ~40.0°C</div><div>4. Altitude: ≤2000m</div></div> <div><div>Main function</div><div>Dimension</div></div> <div><div>1. 2 way*250W TRIAC dimming,<10 lights</div><div>2. CAN (Simon Bus)</div><div>90*66*90mm(L*W*H)</div></div>		<div><div>Product name</div><div>Product code</div><div>Basic parameter</div></div> <div>4-Channel 1-10V Dimming Module(G4) S2200-0718</div> <div><div>1. Nominal voltage:12V DC±5%</div><div>2. Rated current: 100mA</div><div>3. Environmental temperature:-10.0°C ~40.0°C</div><div>4. Altitude: ≤2000m</div></div> <div><div>Main function</div><div>Dimension</div></div> <div><div>1. 4 way*3A, 660W 1-10V dimming, <15 lights</div><div>2. CAN (Simon Bus)</div><div>90*66*90mm(L*W*H)</div></div>
	<div><div>Product name</div><div>Product code</div><div>Basic parameter</div></div> <div>4-Channel TRIAC Dimming Module(G4) S2200-0712</div> <div><div>1. Nominal voltage:12V DC±5%</div><div>2. Rated current: 300mA</div><div>3. Environmental temperature:-10.0°C ~40.0°C</div><div>4. Altitude: ≤2000m</div></div> <div><div>Main function</div><div>Dimension</div></div> <div><div>1. 4 way*3A, 660W TRIAC dimming, <65 lights</div><div>2. CAN (Simon Bus)</div><div>216*66*90mm(L*W*H)</div></div>		<div><div>Product name</div><div>Product code</div><div>Basic parameter</div></div> <div>RS485 DALI Gateway S2200-0731</div> <div><div>1. Rated voltage: 24V DC±10%</div><div>2. Maximum current consumption: 500mA</div><div>3. DALI Bus operating voltage range: 0-20.5VDC,</div><div>4. Built-in DALI Bus power supply: Typical value 17VDC, maximum current 170mA</div><div>5. RS485 rate Baud rate: 9600bps</div><div>6. Environmental temperature: -20°C-85°C</div></div> <div><div>Main function</div><div>Dimension</div></div> <div><div>1. 1-way RS485 interface</div><div>2. 2-way for DALI lighting</div><div>89*72*58.9mm(L*W*H)</div></div>
	<div><div>Product name</div><div>Product code</div><div>Basic parameter</div></div> <div>4-Channel TRIAC Dimming Module(G4) S2200-0717</div> <div><div>1. Nominal voltage:12V DC±5%</div><div>2. Rated current: 300mA</div><div>3. Environmental temperature:-10.0°C ~40.0°C</div><div>4. Altitude: ≤2000m</div></div> <div><div>Main function</div><div>Dimension</div></div> <div><div>1. 4 way*5A, 1100W TRIAC dimming, <65 lights</div><div>2. CAN (Simon Bus)</div><div>216*66*90mm(L*W*H)</div></div>		
	<div><div>Product name</div><div>Product code</div><div>Basic parameter</div></div> <div>2-Channel 1-10V Dimming Module(G4) S2200-0708</div> <div><div>1. Nominal voltage:12V DC±5%</div><div>2. Rated current: 100mA</div><div>3. Environmental temperature:-10.0°C ~40.0°C</div><div>4. Altitude: ≤2000m</div></div> <div><div>Main function</div><div>Dimension</div></div> <div><div>1. 2 way*3A, 660W 1-10V dimming, <15 lights</div><div>2. CAN (Simon Bus)</div><div>90*66*90mm(L*W*H)</div></div>		<div><div>Product name</div><div>Product code</div><div>Basic parameter</div></div> <div>64-Digital I/O Module(G4) S2200-0703</div> <div><div>1. Nominal voltage:12V DC±5%</div><div>2. Rated current: 800mA</div><div>3. Environmental temperature:-10.0°C ~40.0°C</div><div>4. Altitude: ≤2000m</div></div> <div><div>Main function</div><div>Dimension</div></div> <div><div>1. 34 inputs for dry-contact signal</div><div>2. 30 outputs for indicators, doorbell</div><div>3. CAN (Simon Bus)</div><div>162*66*90mm(L*W*H)</div></div>

I/O Module

Gateway Module



Product name BUS Gateway Module (G4)
Product code S2200-0714

Basic parameter

1. Operating voltage: 12V DC±5%
2. Rated current: 200mA
3. Environmental temperature: -10.0℃~45.0℃
4. Altitude:≤2000m

Main function

1. 5-way RS485 interface
2. 2-way CAN bus interface

Dimension 72*66*90mm(L*W*H)
(*Need use with S2200-0715)



Product name IP Gateway Module (G4)
Product code S2200-0715

Basic parameter

1. Operating voltage: 12V DC±5%
2. Rated current: 200mA
3. Environmental temperature: -10.0℃~45.0℃
4. Altitude:≤2000m

Main function

1. 1-way CAN bus interface
2. 1-way Ethernet interface

Dimension 36*66*90mm(L*W*H)
(*Need use with S2200-0714)



Product name Docking AC gateway (VRF)
Product code S00E0-S040

Basic parameter

1. Nominal voltage: 12VDC
2. Power consumption<2W
3. Ambient temperature:-20.0℃ ~ 80.0℃

Main function

1. Compatible with Simon (Modbus) thermostat
2. Docking to mainstream VRF brands(Daikin,Panasonic...)

Dimension 106*58*96mm(L*W*H)

Relay Module



Product name 6-Channel relay module(G4)
Product code S2200-0711

Basic parameter

1. Nominal voltage: 12VDC±5%
2. Rated current:200mA
3. Environmental temperature:-10.0℃ ~ 45.0℃
4. Altitude:≤2000m

Main function

1. 6 way*16A for 3500W lighting,<40 lights
2. CAN (Simon Bus)

Dimension 108*66*90mm(L*W*H)

Strip control Module



Product name RGB/RGBW Strip Control Module(G4)
Product code S2200-0413

Basic parameter

1. Nominal voltage:DC 12V-24V

Main function

1. 4 way*5A,12-24V DC,20m(MAX strip length)
RS485 (Simon Bus)

Dimension 103*76*24mm (L*W*H)



Product name Tunable White and Dimming Strip Control Module(G4)
Product code S2200-0414

Basic parameter

1. Nominal voltage:DC 12V-24V

Main function

1. 2 way*7.5A, tunable white and dimming strip,
12-24VDC,20m(MAX strip length)
2. RS485 (Simon Bus)

Dimension 103*76*24mm(L*W*H)

Sensor



Product name	Infrared and microwave dual sensor
Product code	S2200-0420
Basic parameter	1. Input voltage: DC 9V-24V 2. Current:<65mA 3. Working frequency:24GHz~24.25GHz 4. Ambient temperature: -30°C to 50°C 5. Installation height: 2.5M<H<3.5M 6. Surface mounted installation 7. Microwave detection distance: MAX 4mX8m detection distance (installation height 3 meters) 8. Infrared detection distance: MAX 8m diameter
Main function	1. Dry contact 2. Detect movement and micro motion of people 3. Suitable for Simon RCU cardless power solution



Product name	Human presence sensor(microwave)
Product code	S00E0-S053
Basic parameter	1. Input voltage: DC 12V-24V 2. Current:<75mA 3. Working frequency:24GHz~24.25GHz 4. Ambient temperature: -30°C to 60°C 5. Embedded installation hole diameter 45mm 6. Motion sensing distance:1.5-5.5m(installation height 3m) 7. Presence detection distance:1-4.5m (installation height 3 meters)
Main function	1. Dry contact 2. Detect presence of people 3. Suitable for Simon RCU cardless power solution

Doorbell



Product name	Electronic doorbell (DC12V)
Product code	S2200-0403
Basic parameter	1. Rated voltage: 12V DC±5% 2. Rated power:<2W 3. Ambient temperature: -10°C ~ 40°C
Main function	1. Dry contact 2. Compatible with Simon-BUS system
Dimension	63*32.4*93mm(L*W*H)

Door contact




Product name	Door magnet (DC12V) (5 sets)
Product code	S2200-0404
Basic parameter	1. Rated voltage: 12V DC±5% 2. Rated current:100mA 3. Embedded installation, hole diameter 10mm
Main function	1. Dry contact 2. Detect open/close status of the door



Product name	Window magnet (DC12V) (5 sets)
Product code	S2200-0405
Basic parameter	1. Rated voltage: 12V DC±5% 2. Rated current: 300mA 3. Surface mounted installation
Main function	1. Dry contact 2. Detect open/close status of the window

Curtain Motor

	Product name	High voltage curtain motor
	Product code	S00E0-S050
	Basic parameter	1. Operating voltage:100-240V 2.Rated torque: 1.2N.m 3.Running Speed:14cm/s 4.Ambient temperature:-10.0°C~55°C
	Main function	1.5 wires,strong current control 2.Dry contact

Installation box (G4)

	Product name	Module (G4) RCU installation box
	Product code	S2200-0103
	Main function	1. Used for installing RCU module
	Dimension	450*110*580mm(L*W*H) *can customize

Adjustable curtain track

	Product name	Adjustable curtain track
	Product code	S00E0-S043 Adjustable curtain track(1.2-2m) S00E0-S044 Adjustable curtain track(1.76-3m) S00E0-S045 Adjustable curtain track(2.26-4m) S00E0-S046 Adjustable curtain track(2.76-5m)
	Basic parameter	1. Flexible length range(1.2-2m), 2. Flexible length range(1.76-3m), 3. Flexible length range(2.26-4m), 4. Flexible length range(2.76-5m),
	Main function	1. Compatible with curtain motor *can customize

S4 Bus Multi-control Panel



The S4 Bus multi-control Panel uses the RS485 protocol to control lighting, curtains, HVAC and scenes in a room. It also features interactive energy-saving prompts on the screen.



HD Color Screen



Multi Control



Light Sensing



DIY Wallpaper



Product name	S4 Bus Multi-control Panel
Product code	S2200-0418
Basic parameter	1. Rated voltage: DC12-16V 2. Rated current: 1A 3. Ambient Temperature: -10°C~45°C Ambient 4. Humidity: ≤90%RH(no condensation) 5. Resolution 480*480
Main function	1. RS485 2. Compatible with Simon-BUS system 3. Can control lighting , curtain, A/C and scene
Dimension	86x86x38mm



Scene



Lighting

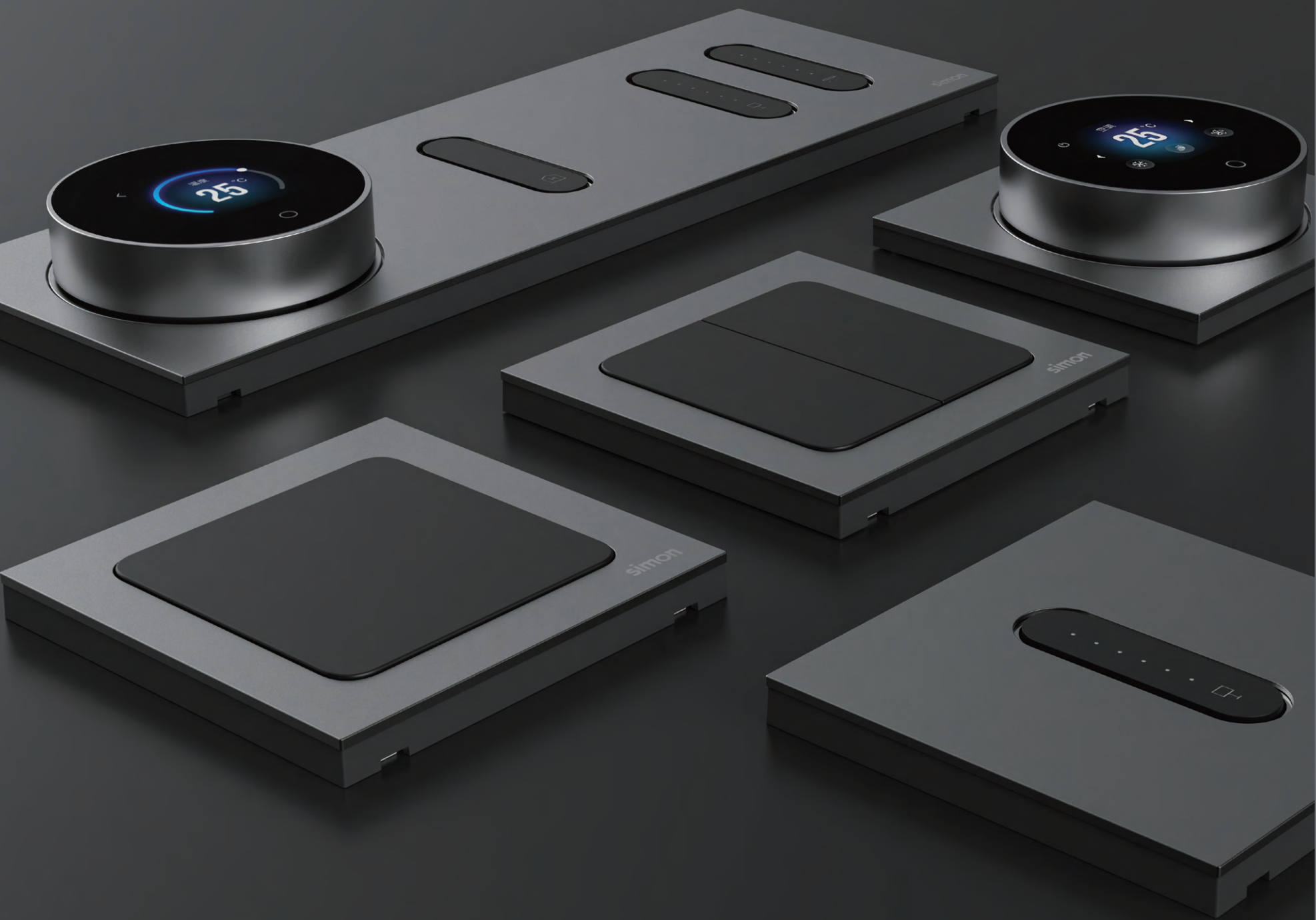


A/C



Energy consumption

Assorted switches and sockets



Simon|S20

Retro Future



RS 485



Dual backlight



-2B
Brushed Grey



-2A
Frosted silver



-2C
Satin Gold



*Static symbols and lettering developed with laser engraving, for backlighting and customizable



*LED indicator to address the control in the dark, the color can be customized

RS485 Switch

* Use with Simon-Bus, open protocol available for third party RCU system (Modules and frames are separated)



82E641
1 Gang ELV switch Module
(DC12V,RS485)



82E645
1 Gang ELV dimming switch Module
(DC12V,RS485)



82E642
2 Gang ELV switch Module
(DC12V,RS485)



82E646
2 Gang ELV dimming switch Module
(DC12V,RS485)



82E644
4 Gang ELV switch Module
(DC12V,RS485)



82E9001
1 Gang dual backlight switch
module(DC12V,RS485)



82E9002
2 Gang dual backlight switch
module(DC12V,RS485)



82E9003
3 Gang dual backlight switch
module(DC12V,RS485)



82E9004
3 Gang dual backlight switch
module(DC12V,RS485)



82E9005
4 Gang dual backlight switch
module(DC12V,RS485)

RS485 Keycard Switch

RS485 Thermostat Module

Dry-contact doorbell switch



82E604
S20 RF Keycard switch Module
(DC12V,RS485)



82E706
S20 Central-AC thermostat
Module(DC12V,RS485,Simon-Bus,FCU&VRF)



58E617
Doorbell Switch with "Do Not Disturb"
"Make Up Room", "Someone In" Indicator
(DC12V)
Dimension: 86*86mm



45E611-61
Doorbell Switch with "Do Not Disturb"
"Make Up Room", "Someone In" Indicator
(DC12V,customize)
Dimension: 86*146mm

Others

S20 also offers high voltage sockets with the wider range of multimedia solutions, USB chargers and communication sockets and sensors.



Multi-standard Socket



Schuko Socket



BS Socket



EU-US Socket



Telephone



TV



USB(A+C)



Shaver Socket



Floor sensor

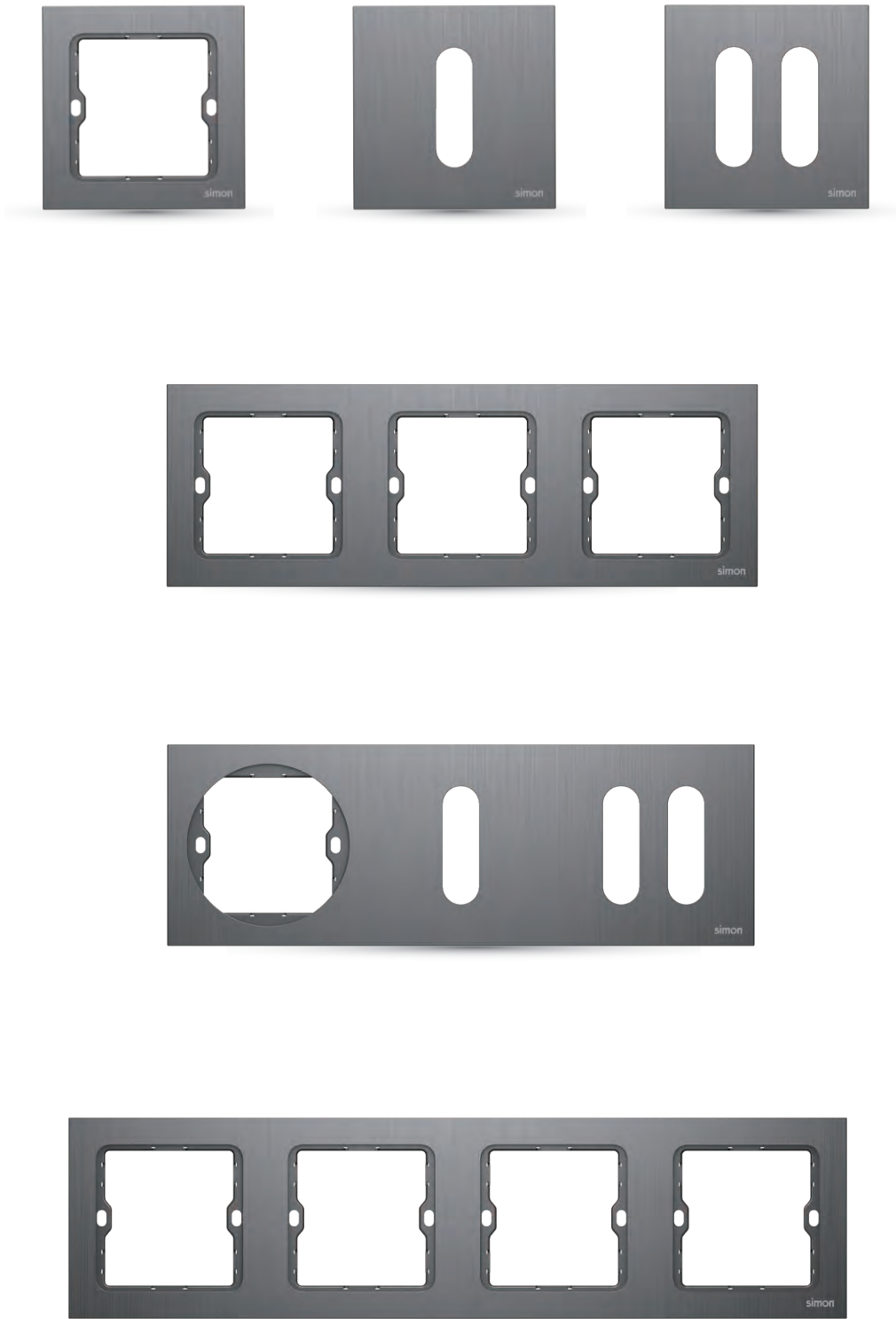


Data



SOS

Frames



Multiple gang solution example




Assorted switches and sockets




Simon | M7

SELECTED MATERIAL SLIM AESTHETICS

 RS 485	 Dry contact	 Dual backlight
 -4F Diamond White	 -4D Diamond Grey	 -4E Diamond Silver
 -2C Satin Gold	 -2B Brushed Grey	 -2A Frosted silver

- 

*Static symbols and lettering developed with laser engraving, for backlighting and customizable
- 

*LED indicator to address the control in the dark, the color can be customized



RS485 Switch Glass and Metal

*Use with Simon-Bus, open protocol available for third party RCU system
*Dual backlight with proximity sensing



66E9001M
1 Gang dual backlight switch module
(DC12V,RS485)



66E9002M
2 Gang dual backlight switch module
(DC12V,RS485)



66E9003M
3 Gang dual backlight switch module
(DC12V,RS485)



66E9004M
4 Gang dual backlight switch module
(DC12V,RS485)



66E9005M
8 Gang dual backlight switch module
(DC12V,RS485)



66E9001G
1 Gang dual backlight switch module
(DC12V,RS485)



66E9002G
2 Gang dual backlight switch module
(DC12V,RS485)



66E9003G
3 Gang dual backlight switch module
(DC12V,RS485)



66E9004G
4 Gang dual backlight switch module
(DC12V,RS485)



66E9005G
8 Gang dual backlight switch module
(DC12V,RS485)

Dry-contact Switch Metal

*Directly use with other RCU



66E641M
1 Gang ELV dry contact
dual backlight switch
(DC12V)



66E642M
2 Gang ELV dry contact
dual backlight switch
(DC12V)



66E643M
3 Gang ELV dry contact dual
backlight switch
(DC12V)



66E644M
4 Gang ELV dry contact dual
backlight switch
(DC12V)



66E645M
6 Gang ELV dry contact dual
backlight switch
(DC12V)

RS485 Keycard



66E604M
M7 RF Keycard switch Module
(DC12V,RS485)

RS485 Thermostat Module Dry-contact doorbell switch



66E7011
Central-AC thermostat Module
(Simon-Bus,DC12V,RS485,VRF/FCU)



58E617
Doorbell Switch with "Do Not Disturb"
"Make Up Room" ; "Someone In" Indicator
(DC12V)
Dimension: 86*86mm



45E611-61
Doorbell Switch with "Do Not Disturb"
"Make Up Room" ; "Someone In" Indicator
(DC12V,customize)
Dimension: 86*146mm

Others

M7 also offers high voltage sockets with the wider range of multimedia solutions, USB chargers and communication sockets and sensors.



Multi-standard Socket with USB A+C Chargers



Schuko Socket with USB A+C Chargers



13A BS Switched Socket with USB A+C Chargers



Twin EU-US with Earth Socket with USB A+C Chargers



Multi-standard Socket with Switch



Schuko Socket



13A BS Switched Socket



Twin EU-US with Earth Socket



2 Pin Socket and Multi-standard Socket



Telephone Outlet (RJ11)



Data Outlet Cat.6



TV Outlet



Dual Band Gigabit Wall-mounted WiFi Router (POE Wifi 6)



USB(5V 2.4A)+TYPE-C(65W)



3000k Sensory Footlight



Emergency Switch

Multiple gang solution example



Assorted switches and sockets

Simon|V8
ELEGANT & LUXURY DESIGN



RS 485



Dry contact



Dual backlight



LED indicator



*Static symbols and lettering developed with laser engraving, for backlighting and customizable



*LED indicator to address the control in the dark, the color can be customized



V8 Rock



V8 Classic



V8 Metal



V8 Crystal

V8 RCU low voltage switch

Modules and frames are separated

-56 champagne

-61 grey

-26 black

V8 Series

Modules and frames are separated

-56 champagne

-61 grey

-26 black

RS485 Switch

* Use with Simon-Bus , open protocol available for third party RCU system(Modules and frames are separated)
* Dual backlight with proximity sensing

80E6401
1 Gang ELV Dual Backlight Switch Module (DC12V, RS485, RCU, Master)

80E6402
2 Gang ELV Dual Backlight Switch Module (DC12V, RS485, RCU, bathroom, mirror)

80E6403
3 Gang ELV Dual Backlight Switch Module (DC12V, RS485, RCU, Master, night, reading)

80E6404
4 Gang ELV Dual Backlight Switch Module (DC12V, RS485, RCU, Master, night, ceiling, strip)

Dry-contact Switch

*Directly use with other RCU

80117
1 Gang ELV push-button Module with LED indicator

80127
2 Gang ELV push-button Module with LED indicator

80137
3 Gang ELV push-button Module with LED indicator

80147
4 Gang ELV push-button Module with LED indicator

RS485 Keycard Switch

80E605
RF Keycard switch Module (DC12V, RS485)

RS485 Thermostat Module

80E710
V8 thermostat Module (DC12V, RS485, Simon-Bus, FCU&VRF) Need to customize

Dry-contact Keycard Switch

V8 RF Keycard switch Module (can customize)

Dry-contact Doorbell Switch

808051
Doorbell switch with "Do Not Disturb" & "Make Up Room" Indicator (ELV)

Others

V8 also offers high voltage sockets with the wider range of multimedia solutions, USB chargers and communication sockets and sensors.

Multi-standard Socket Module with USB A+C Chargers (13A 250V)

Multi-standard Socket Module with Double USB Chargers (13A 250V)

Multi-standard Switched Socket Module (13A 250V)

BS Switched Socket Module (13A 250V)

15A BS Switched Socket Module

Schuko Socket Module (16A 250V)

Euro-US Socket with Earth Contact Module (16A 250V)

USB(5V 3A)+ TYPE-C(30W) module

TV Outlet Module

Telephone Outlet Module (RJ11)

Data Outlet Module Cat.6

HDMI Outlet Module

Emergency Switch Module

Multiple gang solution example



2-gang frame (Doorway control switch)



3-gang frame (Desk side control switch)



5-gang frame (Bedside control switch)

Multiple gang solution example



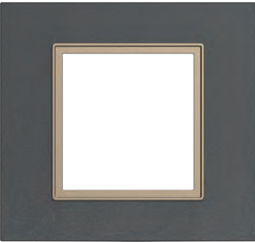
3-gang frame (Hotel multimedia control switch)



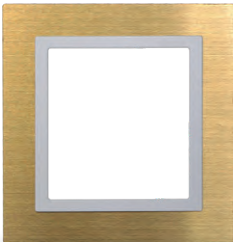
5-gang frame (Bedside control switch – ELV)

Frames

Rock



Metal



Crystal



Plastic



Assorted switches and sockets



Simon*i*7

Elegant Simple Unique Sophisticated



RS 485



Dry contact



Dual backlight



LED indicator



White



-46
Champagne



-61
Grey



-26
Black



*Static symbols and lettering developed with laser engraving, for backlighting and customizable



*LED indicator to address the control in the dark, the color can be customized

RS485 Switch

* Use with Simon-Bus , open protocol available for third party RCU system
* Dual backlight with proximity sensing



70E645
1 Gang ELV switch Module
(DC12V, RS485)



70E646
2 Gang ELV switch Module
(DC12V, RS485)



70E647
3 Gang ELV switch Module
(DC12V, RS485)



70E648
4 Gang ELV switch Module
(DC12V, S485)



70E6401
1 Gang dual backlight switch Module
(DC12V, RS485)



70E6402
2 Gang dual backlight switch Module
(DC12V, RS485)



70E6403
3G dual backlight switch Module
(DC12V, RS485)



70E6404
4G dual backlight switch Module
(DC12V, RS485)

Dry-contact Switch

*Directly use with other RCU



70E117
1 Gang ELV switch Module
with LED indicator



70E127
2 Gang ELV switch Module
with LED indicator



70E137
3 Gang ELV switch Module
with LED indicator



70E147
4 Gang ELV switch Module
with LED indicator



70E116
1 Gang ELV switch Module



70E126
2 Gang ELV switch Module



70E136
3 Gang ELV switch Module



70E146
4 Gang ELV switch Module

Dry-contact Switch

*Directly use with other RCU



5 Gang ELV
switch Module
(*can customize)



8 Gang ELV
switch Module
(*can customize)

RS485 Keycard Switch



70E605
i7 RF Keycard switch Module
(DC12V, RS485)

RS485 Thermostat Module



70E7039
i7 Central-AC thermostat Module
(DC12V,RS485,Simon-Bus,FCU&VRF)

Dry-contact Keycard Switch



i7 RF Keycard switch Module

Dry-contact Doorbell Switch



70E615
i7 ELV doorbell switch Module
(DC12V)

Others

i7 also offers high voltage sockets with the wider range of multimedia solutions, USB chargers and communication sockets and sensors.(Module only)



Multi-standard Switched Socket Module with USB A+C Chargers (13A 250V)



13A BS Switched Socke Module with USB A+C Chargers (13A 250V)



Twin EU-US with Earth Socket with USB A+C Chargers(16A 250V) (combined with frame)



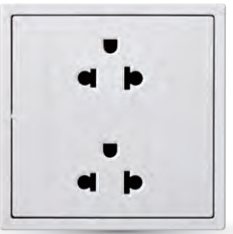
Schuko Socket Module (16A 250V)



Multi-standard Socket Module with Switch(13A 250V)



13A BS Switched Socket Module (13A 250V)



Twin Euro-US Socket (combined with frame)(16A 250V)



Single EU-US with Earth Socket Module(16A 250V)



USB and HDMI Outlet Module



Shaver Outlet Module



Telephone & Data Outlet Module



Telephone & TV Outlet Module



200W LED Dimmer Switch Module (Triac Leading edge)



3000K Sensory Footlight Module

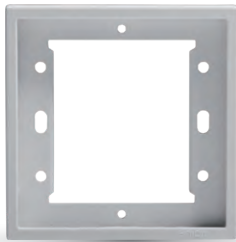


Dual Band Gigabit Wall-mounted WiFi Router Module (POE Wifi 5)

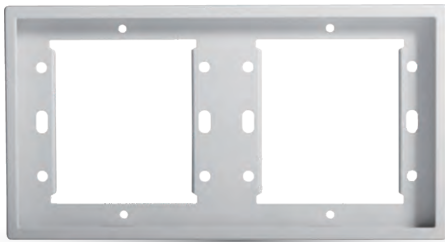


Emergency Switch Module

Frames(76 Type)



1 Gang frame



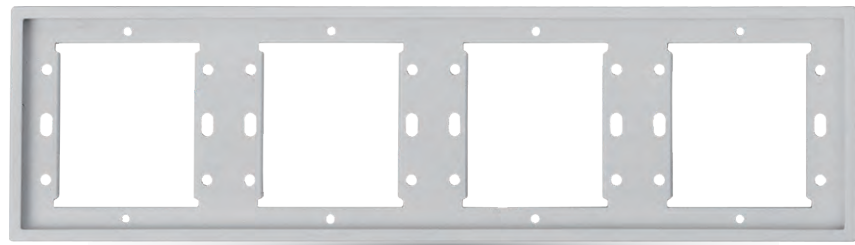
2 Gang frame(76 Type)



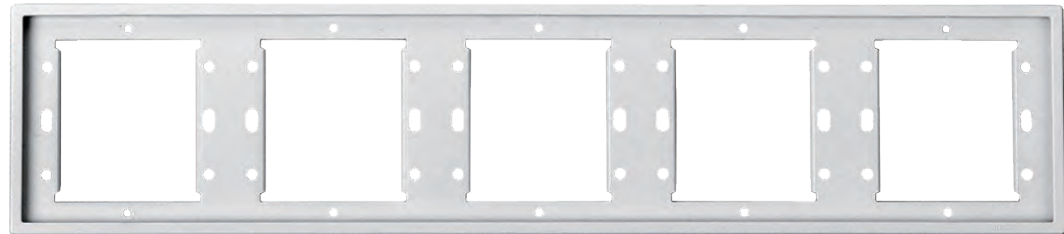
3 Gang frame(76 Type)



60710-50

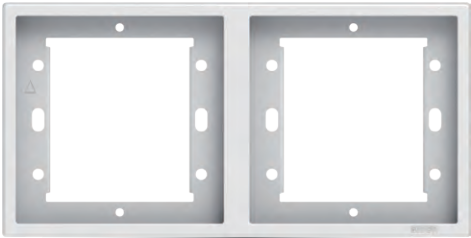


4 Gang frame(76 Type)



5 Gang frame(76 Type)

Frames(86 Type)



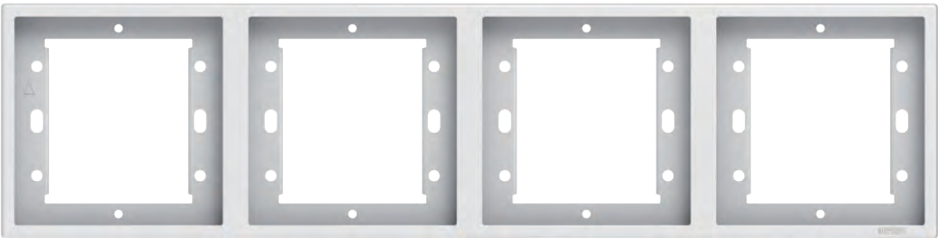
2 Gang frame(86 Type)



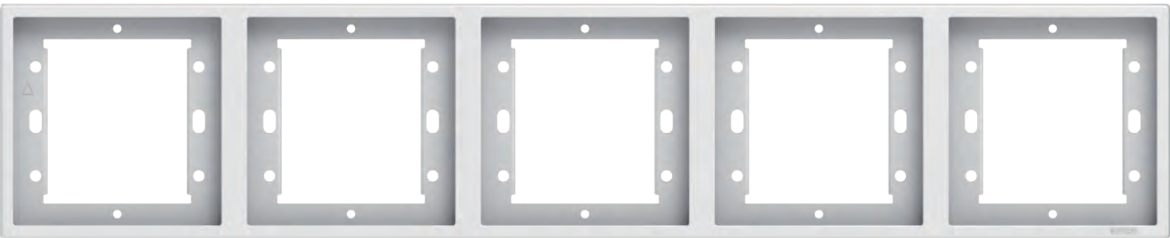
3 Gang frame(86 Type)



45DH86



4 Gang frame(86 Type)



5 Gang frame(86 Type)

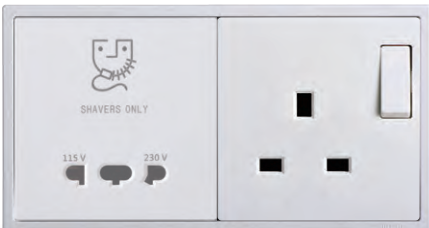
Multiple gang solution example



2 gang frame (Doorway control switch)



3-gang frame (Bedside control switch)



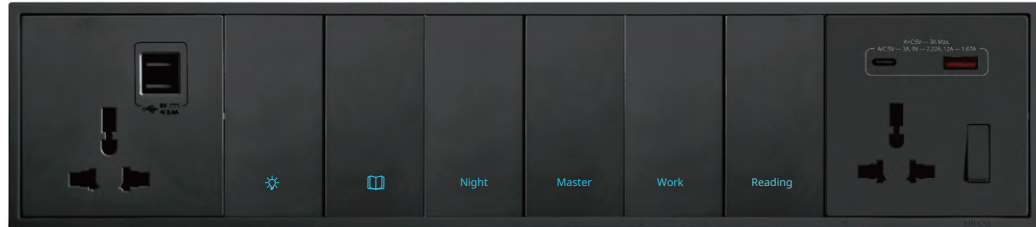
2-gang frame (Shaver socket control switch)



3-gang frame (Bedside control switch)

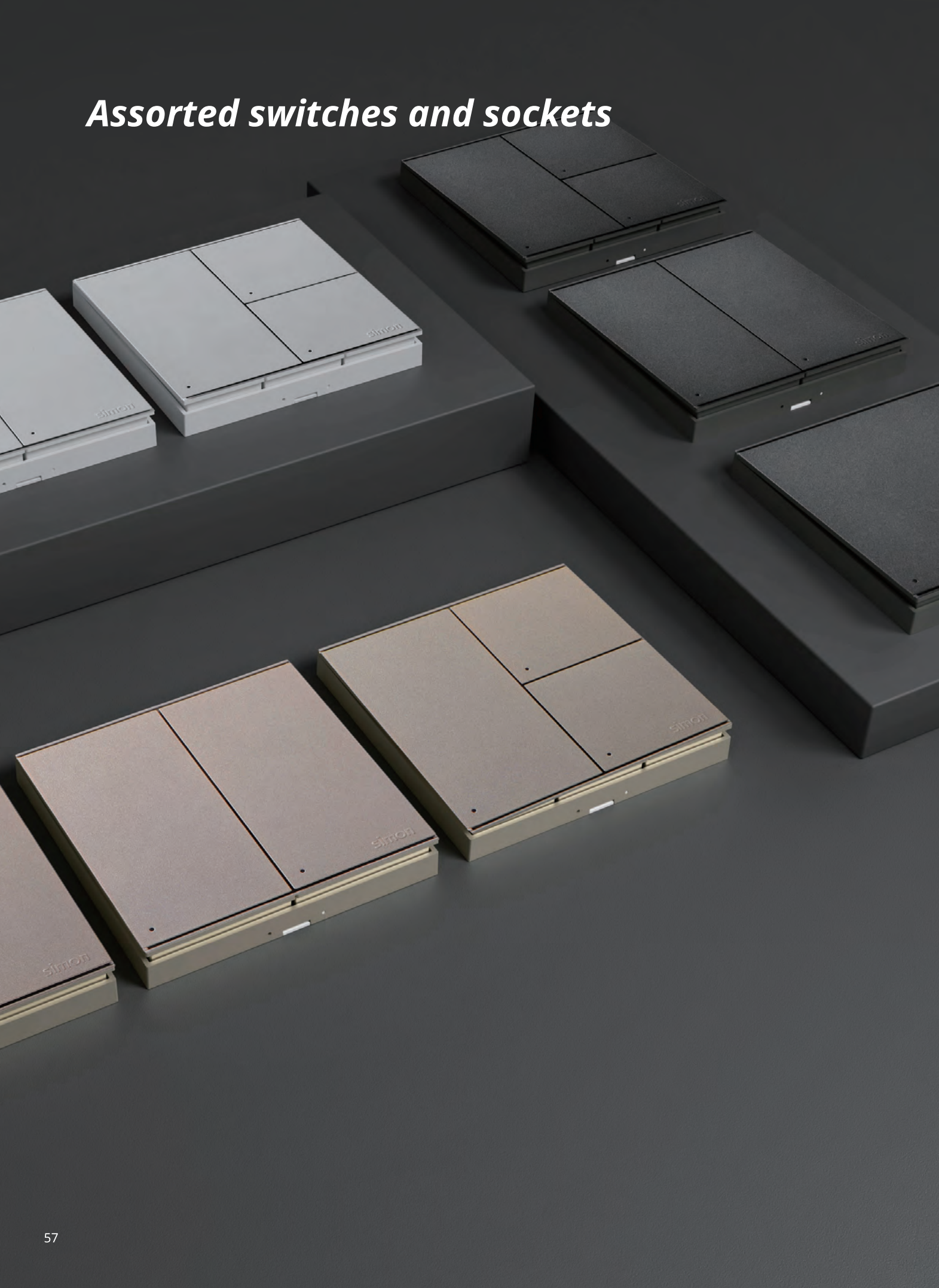


5-gang frame (Hotel multimedia control switch)



5-gang frame (Bedside control switch)

Assorted switches and sockets



Simon|E6

Endless freedom Ingenious steady



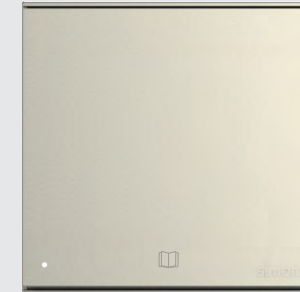
Dry contact



LED indicator



White



-46
Champagne



-61
Grey



-26
Black



*Static symbols and lettering developed with laser engraving, for backlighting and customizable



*LED indicator to address the control in the dark, the color can be customized

Dry-contact Switch

*Directly use with other RCU



72E117
1 Gang ELV push-button Module
with LED indicator



72E116
1 Gang ELV push-button Module



72E127
2 Gang ELV push-button Module
with LED indicator



72E126
2 Gang ELV push-button Module



72E137
3 Gang ELV push-button Module
with LED indicator



72E136
3 Gang ELV push-button Module



72E147
4 Gang ELV push-button Module
with LED indicator



72E146
4 Gang ELV push-button Module

RS485 Keycard Switch



72E605
E6 RF Keycard switch Module
(DC12V, RS485)

RS485 Thermostat Module



72E711
E6 Central-AC thermostat Module
(DC12V, RS485, Simon-Bus, FCU&VRF)

Dry-contact Keycard Switch



E6 RF Keycard Switch
(*can customize)

Others

E6 also offers high voltage sockets and switches with the wider range of multimedia solutions, USB chargers, communication sockets and sensors.



Multi-standard Socket with
USB A+C Changers



13A BS Switched Socket
with USB A+C Changers



Twin EU-US with Earth Socket
with USB A+C Changers



Schuko Socket



2 Pin Socket and Multi-standard
Socket(10A 250V)



13A BS Switched Socket



Twin EU-US with Earth Socket



15A BS Switched Socket



Twin BS Switched socket
(13A 250V)



Single EU-US with Earth Socket
(16A 250V)



Volume Control Switch



TV



Telephone



Data



Emergency Switch

Frames



Multiple gang solution example



2-gang frame (Shaver socket switch)



2-gang frame (Doorway control switch)



2-gang frame (Bath room control switch)



3-gang frame (Bedside control switch – ELV)



3-gang frame (Bedside control switch)

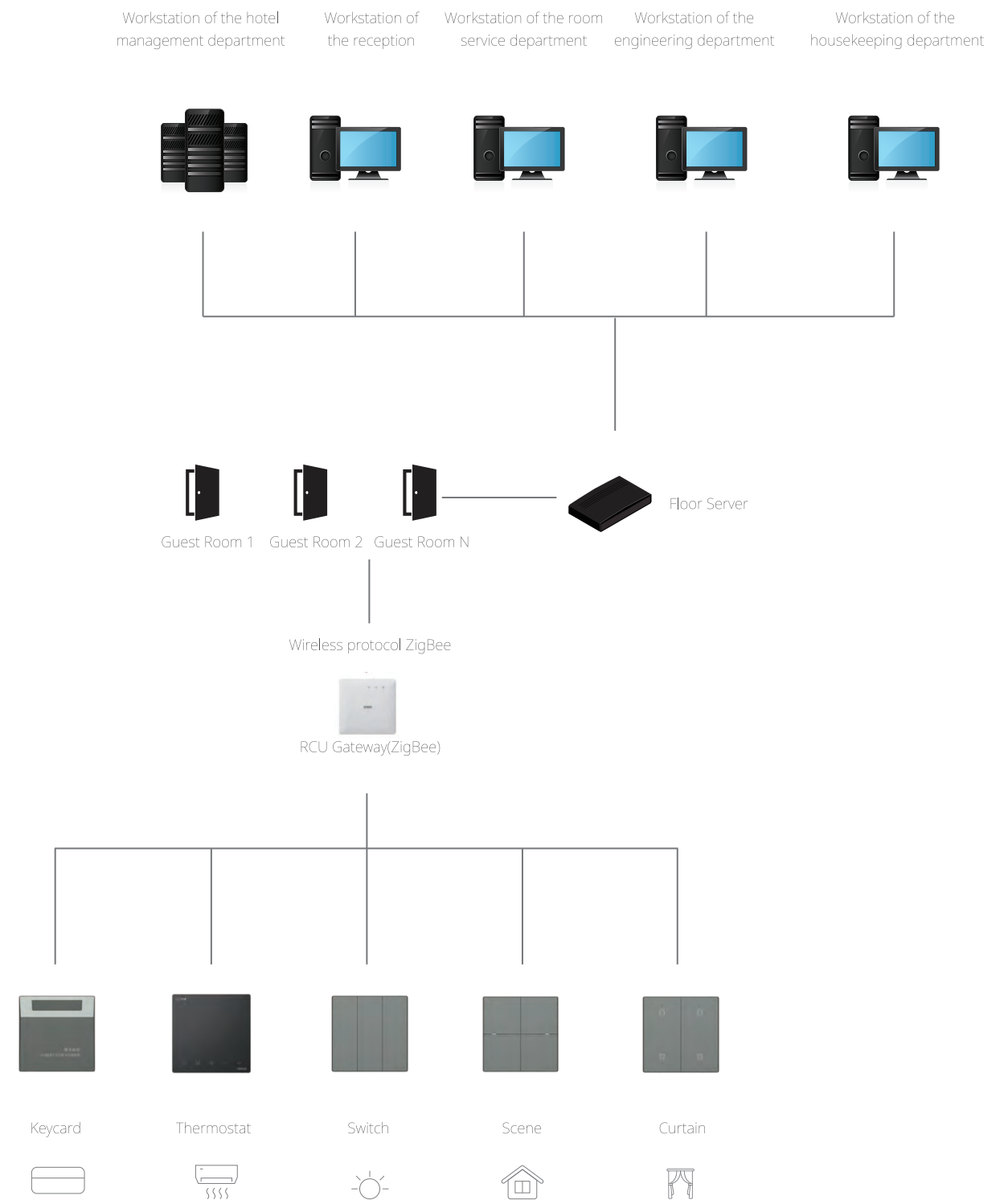


5-gang frame (Bedside control switch)

Simon Wireless RCU system

By replacing traditional mechanical switches with ZigBee switches(L and N wiring) which wireless connect to the ZigBee RCU gateway, the smart upgrade of standard guest rooms can be quickly accomplished. This effortless integration achieves a 'Smart Hotel' experience, enhancing customer satisfaction and increasing hotel occupancy rates.

Network topology and systematic framework





ZigBee signals offer stable, reliable transmission with extended range. The protocol employs a cellular mesh network communication protocol, providing advantages such as wide coverage, multi-channel support, low power consumption, and self-organization, enabling extensive network coverage without dead zones in rooms and overcoming communication distance limitations.

It supports local online management, as well as direct communication between panels. Optimized communication protocols and proprietary algorithms enhance the overall performance.

Security is a core aspect of ZigBee network design, with each data packet undergoing encryption and validation.



Assorted switches and sockets



Simon|M3

Wireless RCU
Boundless & Fearless



*Static symbols and lettering developed with laser engraving, for backlighting and customizable



*LED indicator to address the control in the dark, the color can be customized

Keycard Switch



58E8041HL
Keycard switch

Wireless RCU Switch



58E8042HL
2 Gang Zigbee Switch
(DND, MUR)



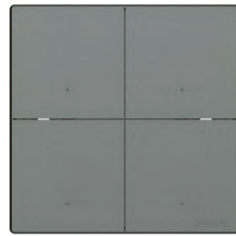
58E8001HL
1 Gang Zigbee Switch



58E8002HL
2 Gang Zigbee Switch



58E8003HL
3 Gang Zigbee Switch



58E8004HL
4 Gang Zigbee Switch



58E8009HL
4 Gang Multifunction Zigbee Switch
(2 scene+2 switch)



58E8022HL
6 Gang Multifunction Zigbee Switch
(3 scene+3 switch)



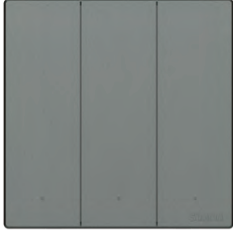
58E8023HL
6 Gang Multifunction Zigbee Switch
(2 scene+4 switch)



58E8005HL
1 Gang Zigbee Scene Switch



58E8006HL
2 Gang Zigbee Scene Switch



58E8007HL
3 Gang Zigbee Scene Switch



58E8008HL
4 Gang Zigbee Scene Switch



58E8021HL
6 Gang Zigbee Scene Switch



58E8013HL
1 Gang Zigbee Curtain Switch



58E8014HL
2 Gang Zigbee Curtain Switch

Wireless RCU Gateway



681803HL
Zigbee Gateway(LAN)



45002
Doorbell

Thermostat



58E7101HL
Zigbee Central-AC
Thermostat(FCU)

Doorbell switch



58E616
Doorbell Switch with "Do Not Disturb"
"Make Up Room", "Someone In" Indicator
(220V)
Dimension: 86*86mm



45E611-61
Doorbell Switch with "Do Not Disturb"
"Make Up Room", "Someone In" Indicator
(220V,customize)
Dimension: 86*146mm

keycardless solution



S2200-0420
Infrared and microwave
dual sensor (DC12V, dry contact)



S00E0-S053
Human presence sensor(microwave)



S2200-0404
Door magnet(DC12V)(5 sets)



681840HL
Wireless RCU Converter
(Dry Contact to Zigbee)



Multiple gang solution example



Others



Multi-standard Socket with
USB A+C Chargers
(13A 250V)



13A BS Switched Socket with
USB A+C Chargers
(13A 250V)



2 Pin Socket and Multi-standard Socket
with Switch with LED
(10A 250V)



Schuko Socket
(16A 250V)



Multi-standard Socket
with Switch (13A 250V)



13A BS Switched Socket
(13A 250V)



2 Pin Socket and Multi-standard Socket
(10A 250V)



Twin EU-US with Earth Socket
(16A 250V)



Shaver Outlet



TV Outlet



Telephone Outlet



Data Outlet Cat.6



200W LED Dimmer Switch
(Triac Leading edge)



3000K Footlight



Wall-mounted WiFi Router
(POE)



Emergency Switch

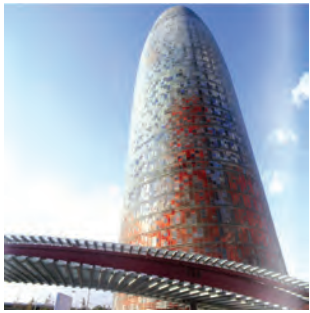
Project Cases



Barcelona Olympic Stadium,Barcelona,Spain



Spanish Pavilion at the Shanghai World Expo 2010,Shanghai,China



Torre Agbar,Barcelona,Spain



THE RITZ - CARLTON
DKI Jakarta, Indonesia



Marina Bay Sands Hotel, Singapore



Hotel JW Marriot



South Taihu Hotel



OCT century waterfront



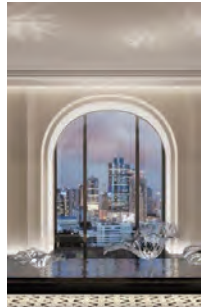
Shanghai Edition Hotel



Hilton, Manila, Philippines



Kremlin,Moscow,Russia



THE RITZ-CARLTON,
ONE Bangkok



Pathumwan Princess Hotel



Micasa All Suite Hotel, Kuala Lumpur,
Malaysia



Double Tree by Hilton,
Johor Bahru

Project Cases



Centara Karon Resort Phuket,Thailand



Centara Karon Villa Phuket,Thailand



JW MARRIOTT- MARQUIS HOTEL Shanghai Pudong



Wyndham Sanya Bay



Howard Johnson Jinyi Hotel Chongqing



Ambassador Hotel Tianyi



V-leader Shenzhenair International Hotel Yinchuan



Sanya Shanhaitian Marriott Hotel



Sofitel Kunming



Qinghai Hotel



Amara Signature Shanghai

Project Cases



Xiong'an Langyue VOCO Hotel

The project consists of 129 rooms and suites, offering a variety of room types. The overall guest control and room intelligent system use the Simon Bus RCU system and E6 switch series. With a modern and efficient system paired with contemporary smart devices, the hotel creates a comfortable and pleasant living space for business travel, leisure, and vacation.



South Taihu Manor

Located in the charming city of Huzhou, this project is a manor-style resort hotel. Simon has equipped it with intelligent solutions that seamlessly integrate with hotel services, offering guests a leisurely vacation experience to "Enjoy Your Desires."

Project Cases



Capella Shanghai Jian Ye Li

Located in Shanghai Hengfu Historical and Cultural Features Protected Area of Xuhui District, the hotel possesses "shikumen" architectural complex built in the 1930s by the French land agent, making it the only seven-star all-villa city resort hotel in Shanghai. The rebuilt architecture will reflect traditional features of Shanghai dwelling with harmonious blending of Shanghai-style culture and Paris expressions. Simon provides guest room control system and switch panel for the hotel as well as witnesses the luxurious regeneration of the historical architecture.



BOFFO L HOTEL XIAN

Simon provides the entire solution of guest room control management for BOFFO LONG Hotel in Xi'an "BOFFO LONG" -- an international hotel brand of Australia, adhering to the work concept of "professional, focused and concentrated" has devoted itself to elaborate the carving of "BOFFO LONG" and "PERFECT" brand for many years. It has successfully created the service concept and system with the core of "surprise + touched," bringing "customized" and "overjoyed touched" experience for guests.

— **simon** —
LIGHT UP
EMOTIONS

The logo features the brand name 'simon' in a bold, lowercase sans-serif font, flanked by short horizontal lines. Below this, the tagline 'LIGHT UP EMOTIONS' is written in a clean, uppercase sans-serif font, split across two lines. A dynamic, dark grey brushstroke underline sweeps across the bottom of the text, starting from the left and ending to the right, adding a sense of movement and energy to the design.