



simon

Barcelona· Belo Horizonte· Brussels· Buenos Aires· Casablanca· Hanoi
Istanbul· Kiev· Lima· Lisbon· Madrid· Mexico D.F· Moscow· New Delhi
Paris· Sao Paulo· Shanghai· Turin· Warsaw· Jakarta

Contact list on catalogue

SIMON, S.A.
Tel. +34 902 109 100
Web. www.simonelectric.com

Simon Electric (APAC)
Web. www.simon-apac.com
E-mail. info@simon-apac.com

Simon Electric (China)
Tel. +86 21 3855 5222
Web. <https://www.simon.com.cn/>

Vietnam Office of Simon Electric
Tel. +84 24 3222 750
Web. www.simon-apac.com

PT Simon Elektrik Indonesia
Tel. +62 21 5296 0373
Web. www.simonelektrik.co.id

May 2020 Printed

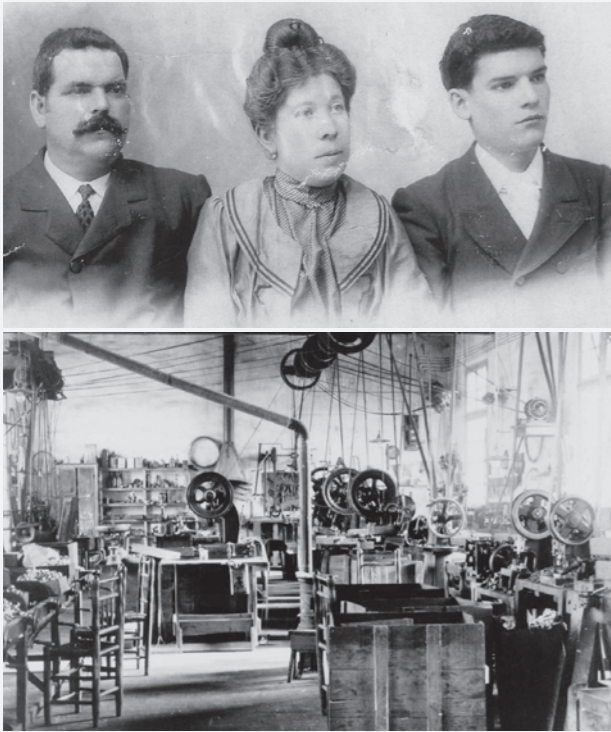


Hotel Solutions

For Asia Pacific

simon

Simon is made up of 25 companies throughout the world, with its headquarters in Barcelona, Spain, in the business of producing and marketing low-voltage electrical materials, electronics, indoor lighting based on LED technology, industrial and urban lighting, voice and data transmission systems.



1916

ARTURO SIMON CREATES THE COMPANY IN OLOT SPAIN



1925

ARTURO SIMON EXPANDS THE RANGE OF ELECTRICAL EQUIPMENT

1957

SIMON BUYS PME

1966

SIMON BUYS IEP

1993

LAUNCH OF THE FIRST HOME AUTOMATION SYSTEM

1998

SIMON BEGINS TO INTERNATIONALISE

1999

SIMON ENTERS THE CHINESE MARKET

2006

THE SIMON GROUP ENTERS THE INDIAN MARKET

2008

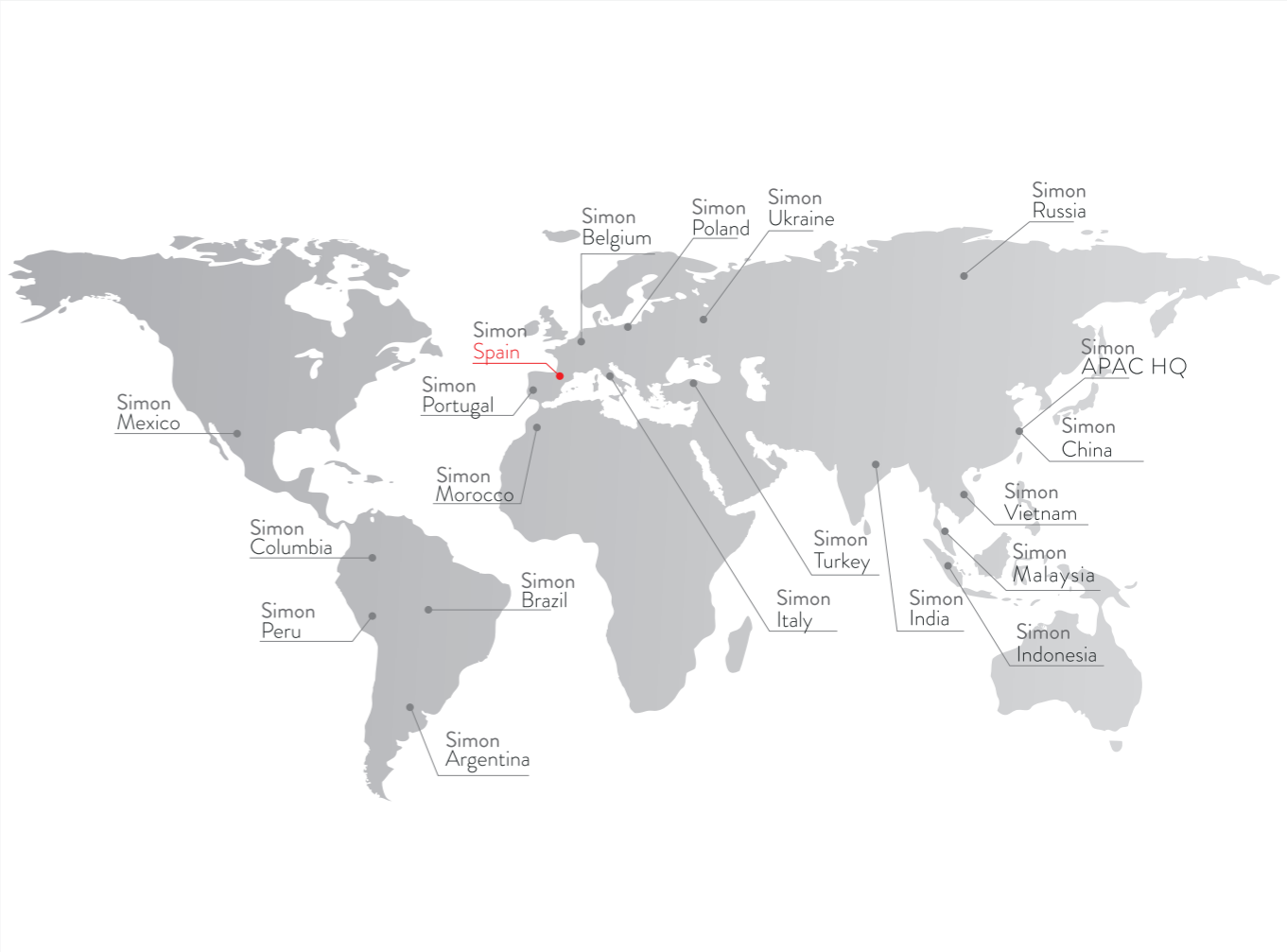
NEW HEADQUARTERS BUILT IN BARCELONA

2010

NEW BUSINESS LINES OF LED INTERIOR LIGHTING

2016

100 YEARS' ANNIVERSARY



With presence over 100 countries all over the world, we provide prompt responds to our clients for presales supports or aftersales matters

Simon has rich experience in working with both international hotel chain and local hotel brand all over the world. We can offer a full range of lighting fixtures, mechanism collections of ideal solutions for hotel and also integrated control solutions. We can provide customized solution to suit for special design and system requirements.



LIGHT UP EMOTIONS

Feeling, is what converts time into moments, into snap shots of time to remember. At SIMON, we know that the spaces are the center of all these experience and be able to fill them with nuances and different intensity of sensual. Hotel is always the place can catch people's sensations as home in travelling. It is like home and beyond home. SIMON's professional hotel solutions make the hotel space has more connections with passengers.



ATTRACTIVE

As a landmark of the region, hotel always need to identify itself from other buildings even by long distance. The professional lighting fixtures and control of SIMON shall be more than necessary to make the hotel space more attractive to passengers.

While as a temporary home for travellers, the hotel room could provide comfortable experience by SIMON'S control system with leading IoT technology.

People come and enjoy their stay, then get their memories with all the epiphany which are the little moments that most delicate and evanescent. They will cherish it and think about coming to the hotel again.

GO GREEN

Go Green has become major pursuit of hoteliers since it means a lot to a sustainable development. Less energy consumption, more durable system and saving manpower are always important.

SIMON could provide integrated solutions to make your hotel more efficient in energy and easier to manage across different systems.





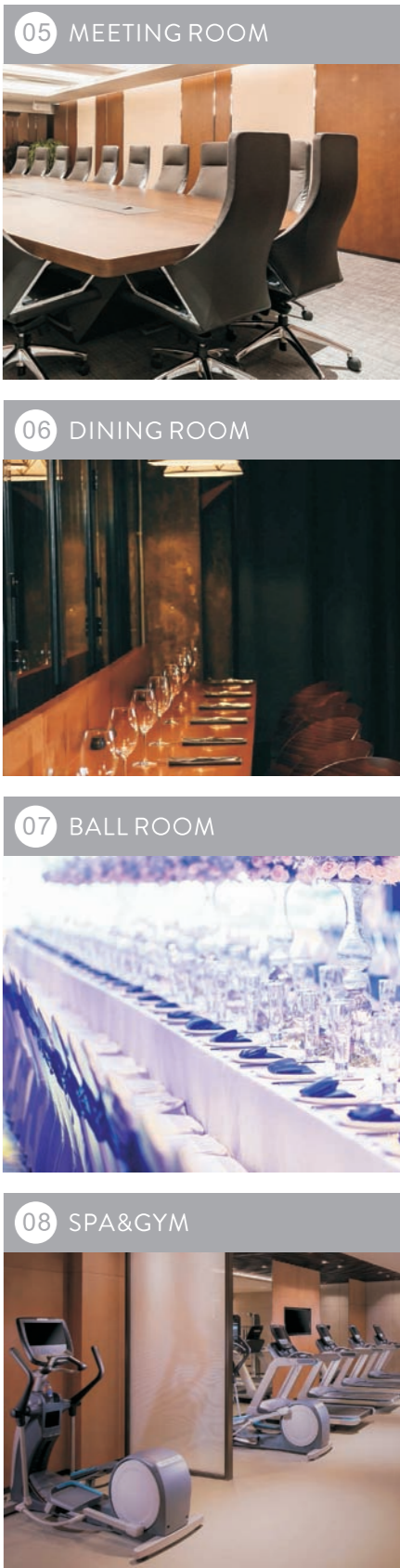
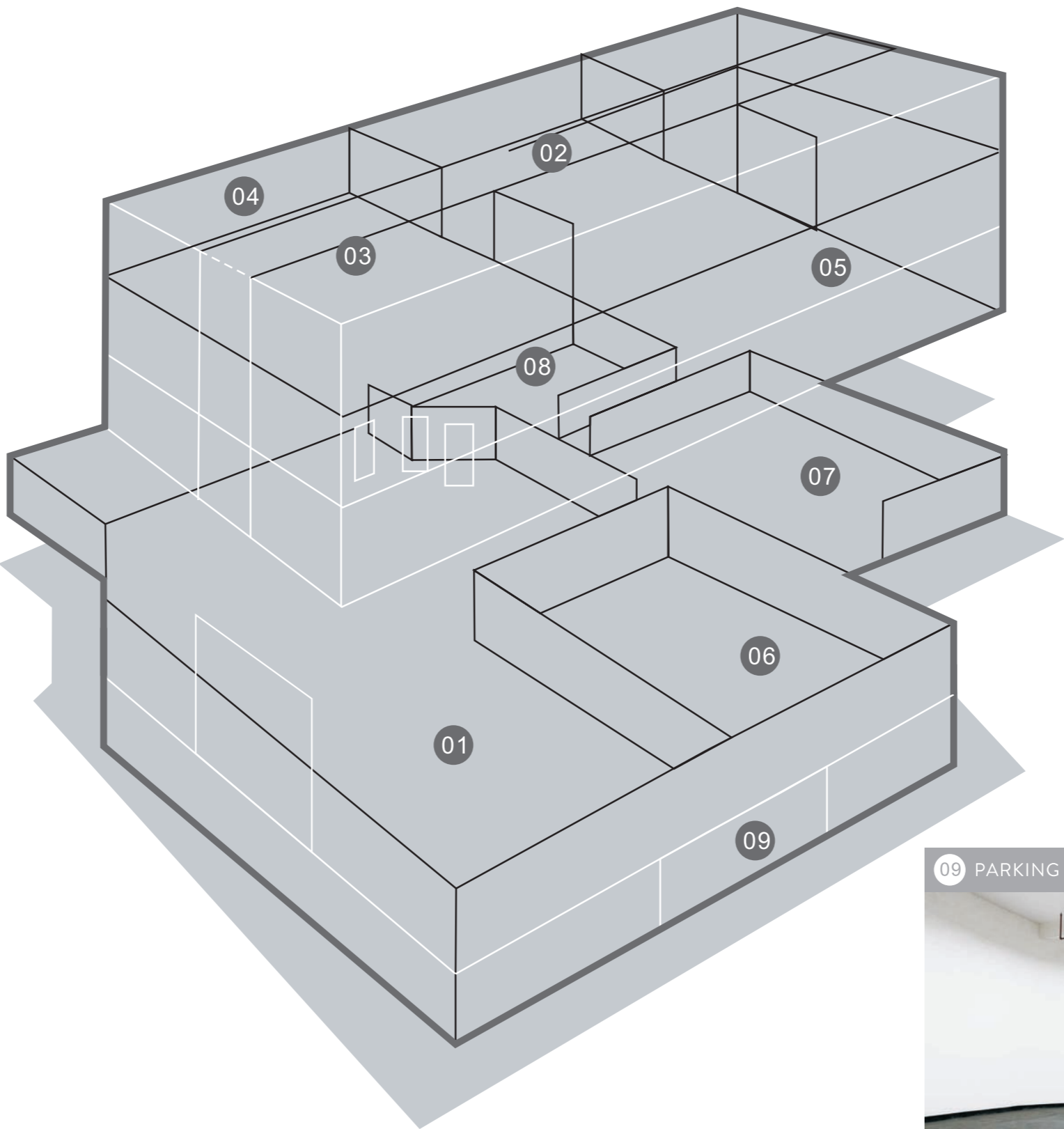
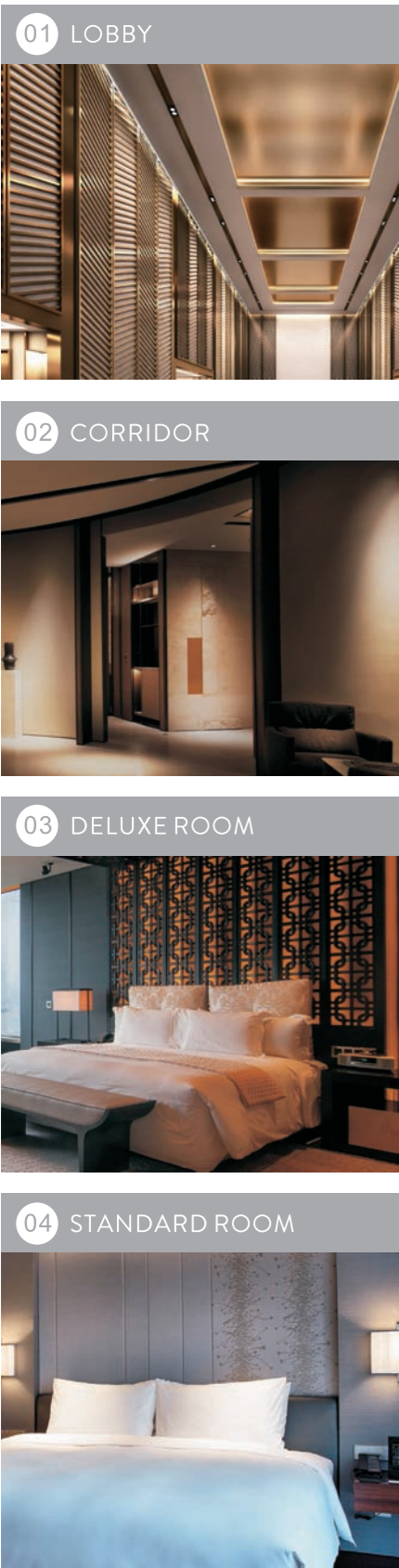
AESTHETICS

Aesthetics is the perception of beauty, the appreciation of nature and principles with love.

SIMON always carries the essence of a Spanish brand to demonstrate the basics of aesthetics by simple and elegant design to touch people's emotions through over hundred years.

FOR A BETTER HOTEL

SIMON offers a total solution to make the hotel space more attractive towards passengers and also less hassle in management.





Hotel lobby is always the place to give warm welcome to the guests.
How to meet such expectations by giving dramatic welcome?

The lobby is the preface to a curated journey. From the luxurious touch points along the way such as valet arrival, to the grand entrance into a magnificent, lovely space. The whole journey should be seamless from check in to final arrival at the room.

Reception

HS30 Spotlight

With various professional accessories and finishing colors which can be customized, HS 30 provides an extreme optical performance while fits into the surroundings seamlessly.

Smaller hole cutting size and frameless installation make it easily to be installed and shine at every corner of the hotel lobby space. Dimming is also as an option.



| Power | TC | CRI | UGR | Beam angle |
|-------|-------------|-----|-----|-------------|
| 7-40W | 3000K/4000K | >90 | <10 | 15°/24°/38° |

| Cutout | Shield angle | IP | Dimming |
|-----------|--------------|-------|----------------------------|
| Ø75-150mm | 30°/40° | 20/44 | On off/trailing edge/1-10V |

SIMON BUS Room Control

Simon Bus Room Control system can be integrated with hotel management software and controlled at reception. The reception staff can easily check room status, turn on air-conditioning when client checking in or send down the housekeeping .



Also Available:



SCENA



Loop



Arch



WW50



SS52



GR30



WW50 Wallwasher

WW50 has PMMA optical lens for a smoother light flow to enhance the aesthetics of showing decoration details of hotel corridor. Its unique cover plate also shapes the beam angle effectively.

With specially designed aluminum heat sink, it is more durable and has longer life span.

| | | | |
|------------|-------------|-----|-----|
| Power | TC | CRI | UGR |
| 16/20W | 2700K/4000K | >80 | <19 |
| | | | |
| Beam angle | Cutout | IP | |
| 50°x12° | Ø85mm | 20 | |



Simon Bus



PIR Sensor

SIMON BUS with PIR Sensor

For accurate control and energy saving program, Simon bus can work with PIR sensors to dim down the lighting when there is nobody in the corridor.

Also Available:



Loop



KC1



SS20



Presence Detector Switch



50E

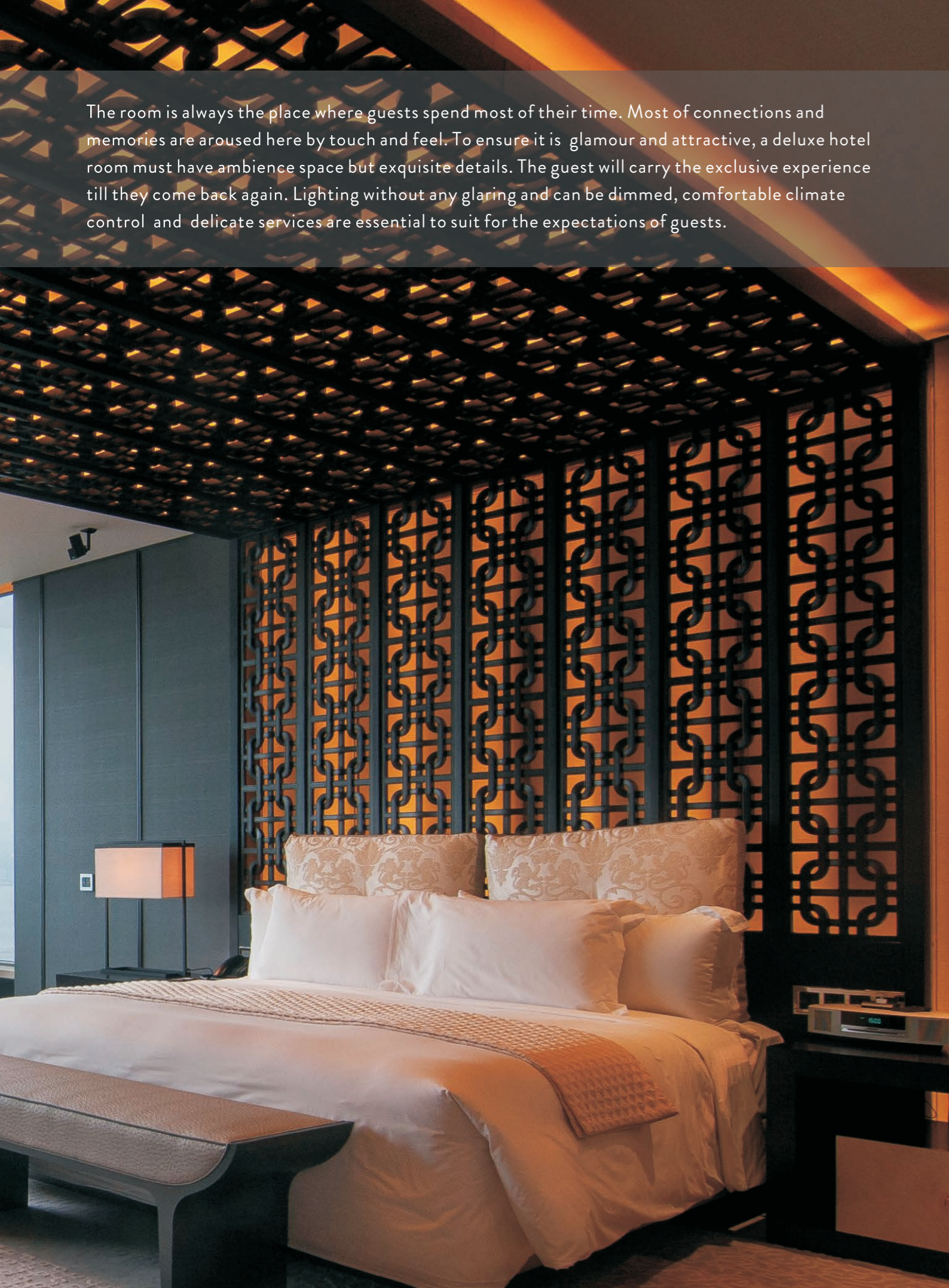


SP1

Walking along the corridors with endless fascinating vistas is another joy of the journey of stay. The impression created by furnishing and lighting of the corridor can also be key to the guest experience.

The way to the room should not just be as enjoyable as walking down a corridor can be made, but should also be easy in terms of the guest finding a room and should enable the guest, en route, to see everything the hotel has to offer. After all, the hotel wants the guest in the bar/spa/restaurants spending money, not in solitary isolation in their room.





The room is always the place where guests spend most of their time. Most of connections and memories are aroused here by touch and feel. To ensure it is glamour and attractive, a deluxe hotel room must have ambience space but exquisite details. The guest will carry the exclusive experience till they come back again. Lighting without any glaring and can be dimmed, comfortable climate control and delicate services are essential to suit for the expectations of guests.

Deluxe Room

FM60 Spotlight

Extreme optical performance

With CRI 95, FM60 has great performance showing the original color of the object. Deeply concealed illuminating source enhance the anti-glare character. With different beam angles, FM60 provides smooth glow of light.



| Power | TC | CRI | UGR |
|-------------|--------------|----------|-----|
| 3-9W | 3000K/4000K | >95 | <14 |
| Beam angle | Shield angle | Cutout | IP |
| 10°/20°/30° | 40°/50° | Ø35-55mm | 20 |



SIMON BUS Room Control

Modular design and easy installation. Can be integrated with 3rd party system like door lock and easy to manage remotely. Energy saving program can be set according to hotel management's requirement.



V8 Mechanism Collection

Designed from the heart of a Spanish artist, the V8 is a representation of the most modern aesthetics. With glass and metal frame, V8 brings outstanding elegant feeling for luxury atmosphere.

V8 Collection offers both high voltage switch and also low voltage switch which has a sensory back light.

All these aesthetics and technologies with wide range of solutions like multimedia and sensors.

Also Available:



HS30



FD70



SS50



A standard room shall provide all the basics that a traveler needs as a temporary home. The design maybe simple but it won't be rough. With the right lighting fixtures and control system, a standard room can be outstanding by details and functionalities. The guest will feel as staying at another home.

Standard Room

KC1 Spotlight

KC1 has good performance against reasonable budget to suits for various purpose with full options of cover in different shapes and colors.



| Power | TC | CRI | Beam angle |
|-------|-------------------|-----|-----------------------------------|
| 3-12W | 2700K/3000K/4000K | >90 | 10°/24°/36°/60° |
| UGR | Cutout | IP | Dimming |
| <19 | Ø75-90mm | 20 | On off/ trailing edge/ 1-10V/DALI |



Mechanism Collection

The I7 collection is simple and elegant with multigang installation frames. With finger print proof coatings and all safety measures, I7 is ideal for hotel room use. It can be also customized with colors and laser print.

I7 also offers both low voltage and also high voltage switch with the wider range of multimedia solutions, USB chargers and sensors .

Also Available:



HS30



SS20



SP1



E6



50 Collection



Simon Bus

Meeting Room



FD62 Downlight

With power output through 7-40W, FD62 can be fitted to wide range of ceiling height. Deeply concealed lighting source provides better anti-glare performance.

| Power | TC | CRI | Beam angle |
|-------|-------------------|-----|------------|
| 7-40W | 3000K/4000K/6000K | >80 | 60° |

| UGR | Cutout | IP | Dimming |
|-----|-----------|----|----------------------------|
| <21 | Ø90-158mm | 20 | On off/trailing edge/1-10V |



I7 Mechanism Collection

With wide range of multimedia solutions, USB chargers and sensors , I7 collection is ideal for perfect connectivity and energy saving at meeting room.

Low voltage switch of I7 Collection can work with RCU to realize scenario lighting control for different function of the meeting room.

Also Available:



GR30



LL52



LL20



PL52



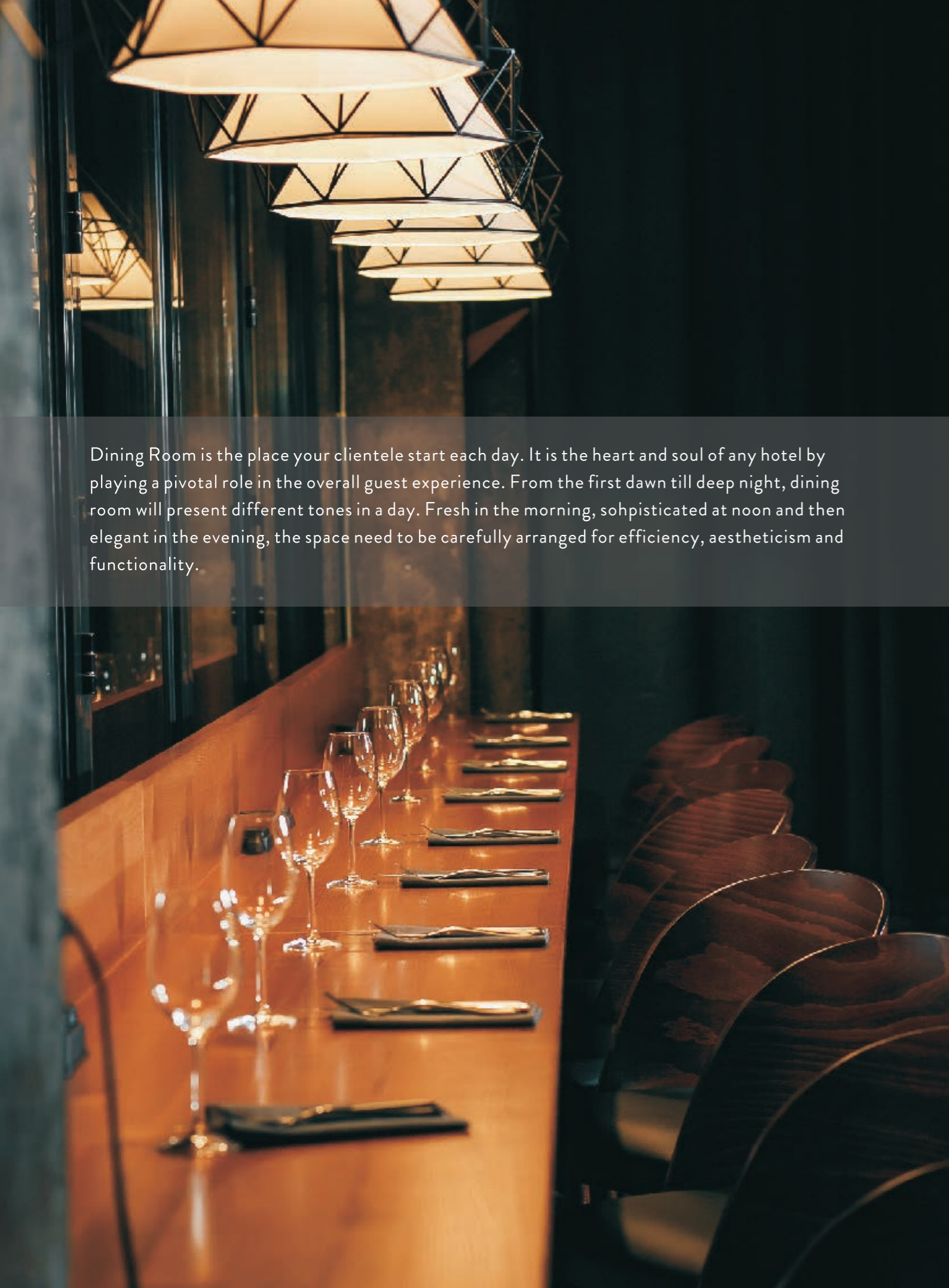
KC1



SS50

Functionality is always the most important issue for a meeting room as people discuss their work here. So the lighting need to be suitable for different functions as reading, conference, video call or presentation by both luminary and color temperature. Also switching the lighting scenario simple by only one key is also very important.





Dining Room is the place your clientele start each day. It is the heart and soul of any hotel by playing a pivotal role in the overall guest experience. From the first dawn till deep night, dining room will present different tones in a day. Fresh in the morning, sophisticated at noon and then elegant in the evening, the space need to be carefully arranged for efficiency, aestheticism and functionality.

Dining Room and Lounge



GR30 Spotlight

GR30 is designed to be integrated with ceiling especially for some space like dining room. With turning structure, the light beam can adjusted to all directions as required by the ambient. It is also with anti-glare design.

| Power | TC | CRI | Beam angle |
|-------|---------------------------|-----|----------------------------|
| 9-90W | 3000K/4000K | >80 | 15°/24° |
| UGR | Cutout | IP | Dimming |
| <19 | From 90x90mm to 420x145mm | 20 | On off/trailing edge/1-10V |



SCENA Lighting Control

Automatically turn the space into designed use by creating different atmospheres through programmed lighting scenarios over the day. Even suitable for RGB or different dimming protocols. With accurate control and better efficiency, it will bring a lot of positive impact to the business.

Also Available:



FM60



ARCH (RECESSED)



ARCH (SURFACE)



HS30



KC1



SS52



HS68 Spotlight

With deeply concealed lighting source, HS68 gives extraordinary anti-glare performance. More professional optical solutions and narrower beam angle available. Compatible fitting design for different installation of various interior finishing with beam angle from 15°to 36°and occasions like track and grill in the ball room.

| Power | TC | CRI | UGR | Beam angle |
|-------|-------------------|-----|-----|-------------|
| 5-15W | 2700K/3000K/4000K | >90 | <9 | 15°/24°/36° |

| Cutout | IP | Dimming |
|----------|---------------------|----------------------------|
| Ø55-75mm | 20(IP 44 customize) | On off/trailing edge/1-10V |



SCENA Lighting Control

With all spectrum of devices, Scena Lighting Control system is adaptable with various of lighting fixtures including 0-10V, DALI and DMX. It even offers accurate RGB and Color temperature dimming.

You can turn the space for different purpose like conference, banquet and wedding ceremony by simply make certain program according to your lighting design.

Also Available:



HS30



GR30



RS26



WW50



FU52



SS52



Ballroom is always the place carries those breath taking memories that will be cherished for lifelong. It should exude an atmosphere of rich and refined beauty, making it desirable venue. To echo with any symphony, any function and layout , the exquisite lighting and control system will be always vital to ensure the space is suitable for any special occasion or conference.



Creating a right atmosphere for gym, swimming pool and SPA is essential. For gym and swimming pool, we recommend using a white cool color temperature lighting. To create a bright and efficiency environment for guest to work out. For SPA, we recommend using a dime yellow color temperature lighting. To create a warm and relax environment. Also, because the environment of gym, swimming pool and SPA is always moisture, a waterproof lighting is required.

SPA and Gym

FD70 Spotlight

FD70 downlight has a very compact design and minimalistic frame.

With three different choices which are IP44 anti-glare fixed model and IP65 waterproof model, which suit the wet ambient of spa or pool; And IP 20 adjustable beam direction model that can be adjusted according to equipment position at site.



| Power | TC | CRI | UGR | Beam angle |
|-------|-------------------|-----|-----|------------|
| 8W | 2700K/3000K/4000K | >80 | <9 | 40° |

| Shield angle | Cutout | IP | Dimming |
|--------------|---------------------------------|--------------|------------------------------------|
| 30° | Round: Ø75mm Square: 75x75mm | 20 / 44 / 65 | On off/ trailing edge/ 1-10V |

SCENA Lighting Control

Accurately turn the space into designed use by create different atmosphere through programmed lighting scenarios over the day.
All those scenarios can be turned on automatically by programmed schedule or manually by hand.



Also Available:



FD62



RS26



LL20



GR30



SP1



SS20



WP30

With whole PC cover to protect against water and dust, WP50 achieves IP65 waterproof standard. Specially designed push-click installation system makes the large scale installation like parking area much easier.

| Power | TC | CRI | Beam angle |
|--------|-------------|-----|------------|
| 20-50W | 4000K/5700K | >80 | 120° |

| Product Size | IP |
|--------------|----|
| 660-1560mm | 65 |

Also Available:



VALOR BULBS



T8



PIR SENSOR



VALOR DOWNLIGHT



VALOR DOWNLIGHT
(SURFACE)



SENSING CL

For the lighting of parking lot and back of house, we want it to have a good balance between high brightness and low cost. As a result, we usually apply a light with cost efficiency, easy to maintenance, and have a longer service life. A weather-proof light with waterproof and dustproof is perfect choice for these locations.





HOTEL MARRIOT AUDITORIUM

Simon's SCENA Lighting control provided dimming control, scenario control and calendar control in the lobby and ball room to create various atmosphere for the space. At day time, SCENA makes the public area bright and warm for coffee and tea time, while at night it dims down the lightings to make the space suitable for cocktail drinks.



THE EQUATORIAL KUALA LUMPUR HOTEL

Hotel Equatorial is a Malaysian hotel chain with properties in Malaysia, China and Vietnam. Founded in 1971, the iconic Equatorial Hotel Kuala Lumpur is one of the first 5-star hotels in the city. Simon provided V8 collection to 444 rooms and it brought the most complete and comfortable solutions with a really high-end aesthetics.

Project Reference



- 1. Grand Hyatt, Bali Indonesia - Simon i7
- 2. Mia Resort, Nha Trang, Vietnam - Simon i7
- 3. Banyan Tree, Phuket Thailand - Simon i7
- 4. Edition Hotel, Shanghai China - Simon RCU+Simon V8
- 5. FLC Luxury Hotel, Quy Nhon, Vietnam - Simon i7
- 6. Four Points by Sheraton, Puchong, Malaysia
- 7. Double Tree by Hilton, Bangkok, Thailand
- 8. Capella Hotel, Shanghai China - Simon RCU+i7
- 9. Marriott Hotel, Sabah Malaysia - Simon i7
- 10. Mandarin Oriental, Kuala Lumpur Malaysia

